

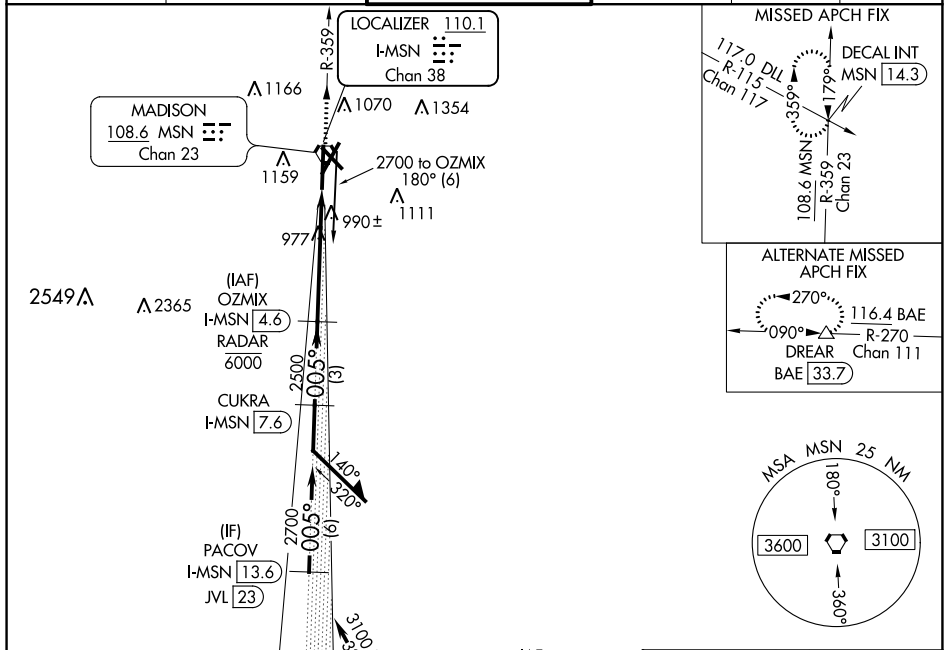
LOC/DME I-MSN 110.1	APP CRS 005°	Rwy Idg 8005
Chan 38		TDZE 862
		Apt Elev 887

ILS RWY 36 (CAT II & III)

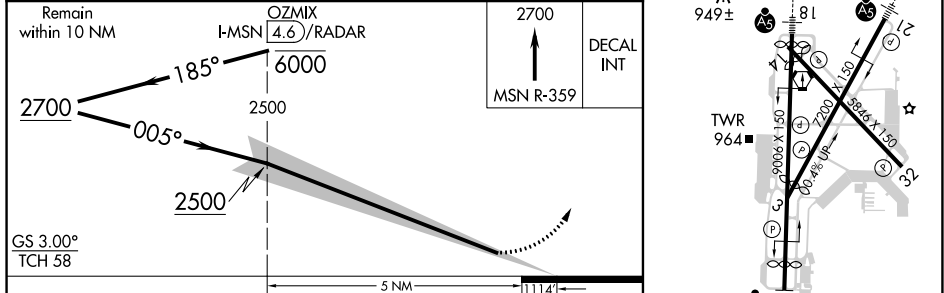
DANE COUNTY RGNL-TRUAX FIELD (MSN)

⚠ DME or RADAR required. S-ILS R36 NA when control tower closed. CAT II: RVR 1000 authorized with specific OPSPEC, MSPEC, or LOA approval and use of autoland or HUD to touchdown.	ALSF-2 	MISSED APPROACH: Climb to 2700 on MSN VORTAC R-359 to DECAL INT/MSN 14.3 DME and hold.
--	------------	--

ATIS 124.65 278.3	MADISON APP CON ★ 135.45 343.7	MADISON TOWER ★ 119.3 (CTAF) 0 257.8	GND CON 121.9 348.6	CLNC DEL 121.625	UNICOM 122.95
-----------------------------	--	--	-------------------------------	----------------------------	-------------------------



Remain within 10 NM	OZMIX (I-MSN 4.6)/RADAR 6000	2700	DECAL INT
GS 3.00° TCH 58	2500	MSN R-359	



CATEGORY	A	B	C	D
S-ILS 36		CAT II RA 109/12	100 DA 962	
S-ILS 36		CAT III RVR 06		

CATEGORY II & III ILS - SPECIAL AIRCREW & AIRCRAFT CERTIFICATION REQUIRED

HIRL all Rwy's
REIL Rwy's 3 and 32
REIL Rwy 14

EC-3, 25 FEB 2021 to 25 MAR 2021

EC-3, 25 FEB 2021 to 25 MAR 2021