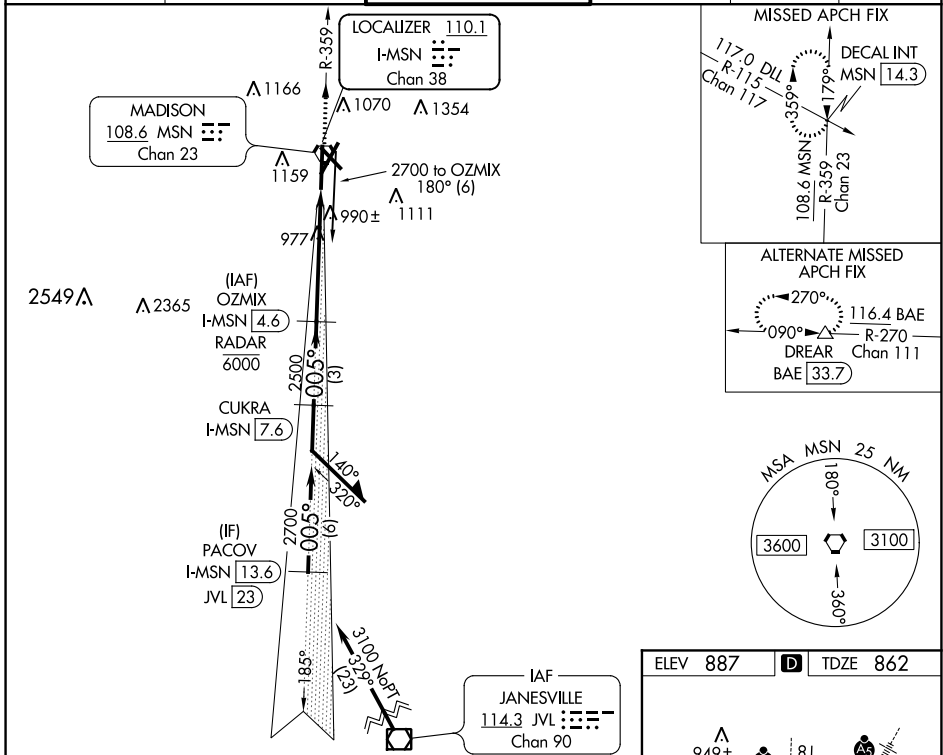


LOC/DME I-MSN <b>110.1</b> Chan <b>38</b>	APP CRS <b>005°</b>	Rwy Idg TDZE Apt Elev	<b>8005</b> <b>862</b> <b>887</b>
---	------------------------	-----------------------------	---

**ILS RWY 36 (SA CAT I)**  
DANE COUNTY RGNL-TRUAX FIELD (MSN)

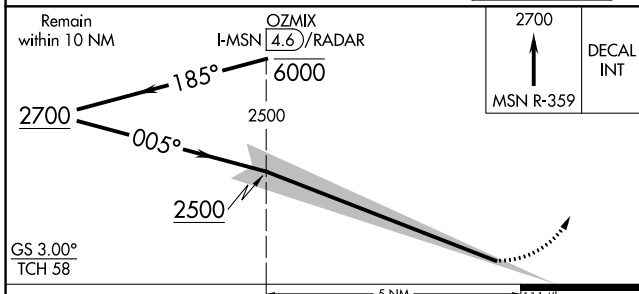
<b>⚠</b> DME or RADAR required. Requires specific OPSPEC, MSPEC, or LOA approval and use of HUD to DH. S-ILS R36 NA when control tower closed.	ALSF-2 	MISSED APPROACH: Climb to 2700 on MSN VORTAC R-359 to DECAL INT/MSN 14.3 DME and hold.
--	------------	--

ATIS <b>124.65 278.3</b>	MADISON APP CON * <b>135.45 343.7</b>	MADISON TOWER * <b>119.3 (CTAF) 0 257.8</b>	GND CON <b>121.9 348.6</b>	CLNC DEL <b>121.625</b>	UNICOM <b>122.95</b>
-----------------------------	--	--	-------------------------------	----------------------------	-------------------------

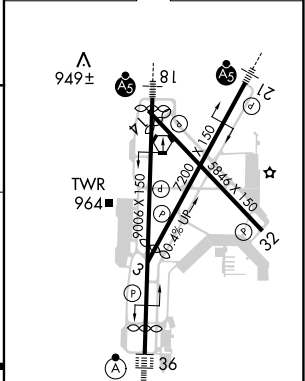


EC-3, 25 FEB 2021 to 25 MAR 2021

EC-3, 25 FEB 2021 to 25 MAR 2021



ELEV 887	<b>D</b>	TDZE 862
----------	----------	----------



CATEGORY	A	B	C	D
S-ILS 36	RA 159/14 150 DA 1012			
<b>SA CATEGORY I ILS - SPECIAL AIRCREW &amp; AIRCRAFT CERTIFICATION REQUIRED</b>				

HIRL all Rwys  
REIL Rws 3 and 32  
REIL Rwy 14