

WAAS CH 82721 W36A	APP CRS 005°	Rwy Idg TDZE 862 Apt Elev 887	8005
--	------------------------	---	-------------

RNAV (GPS) RWY 36

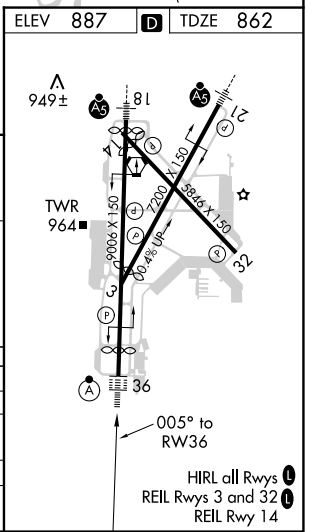
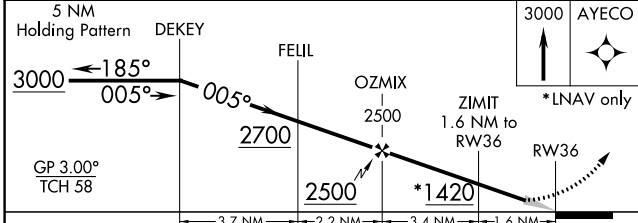
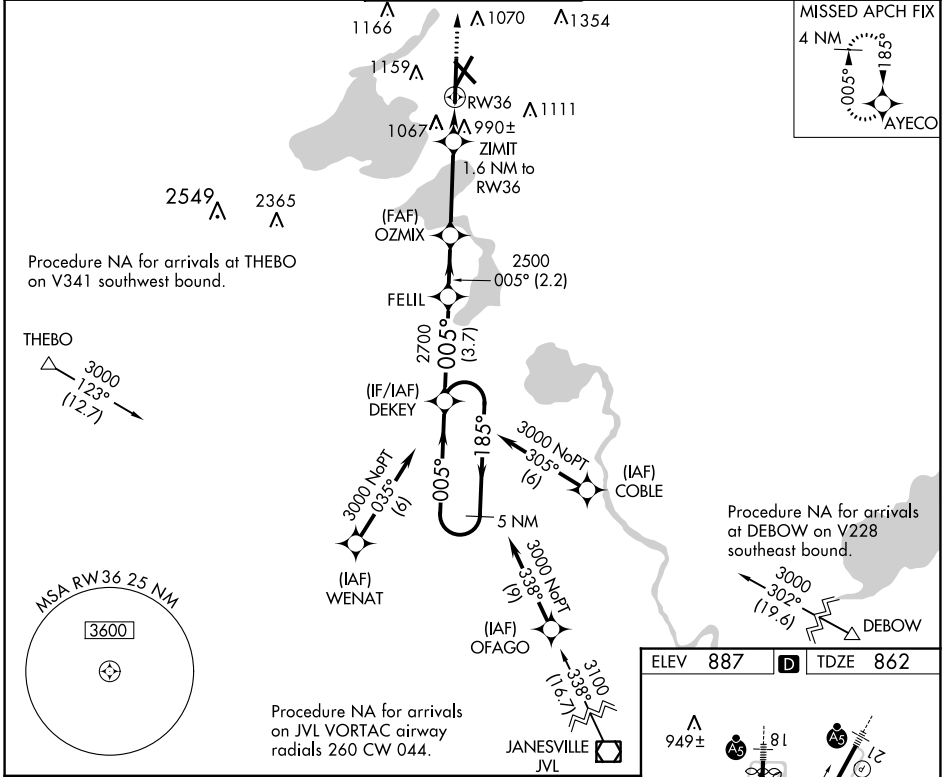
DANE COUNTY RGNL-TRUAX FIELD (MSN)

⚠ For uncompensated Baro-VNAV systems, LNAV/VNAV NA below -19°C (-2°F) or above 54°C (130°F). DME/DME RNP-0.3 NA. For inop ALSF-2, increase LNAV/VNAV all Cats visibility to 1½ miles. **RVR 1800 authorized with use of FD or AP or HUD to DA.

ALSF-2

MISSED APPROACH: Climb to 3000 direct AYECO and hold.

ATIS 124.65 278.3	MADISON APP CON * 135.45 343.7	MADISON TOWER * 119.3 (CTAF) 0 257.8	GND CON 121.9 348.6	CLNC DEL 121.625	UNICOM 122.95
-----------------------------	--	--	-------------------------------	----------------------------	-------------------------



CATEGORY	A	B	C	D
LPV DA **		1062/24	200 (200-½)	
LNAV/VNAV DA		1331/60	469 (500-1¼)	
LNAV MDA	1300/24	438 (500-½)	1300/40	438 (500-¾)
CIRCLING	1420-1	1460-1	1460-1½	1700-2¾
	533 (600-1)	573 (600-1)	573 (600-1½)	813 (900-2¾)

EC-3, 25 FEB 2021 to 25 MAR 2021

EC-3, 25 FEB 2021 to 25 MAR 2021