

(DIDL5.DIDL5) 18144

# DIDL5 FIVE DEPARTURE

AL-266 (FAA)

MISSOULA INTL (MSO)

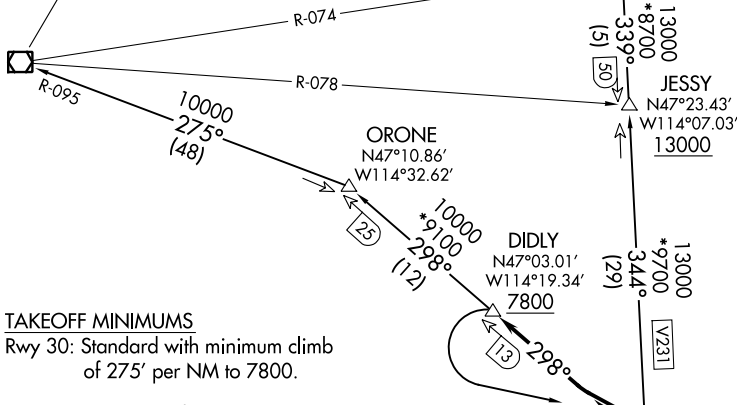
MISSOULA, MONTANA

**TOP ALTITUDE:  
14000**

**KALISPELL**  
113.2 FCA  
Chan 79  
N48°12.85'-W114°10.55'  
L-13, H-1

**MULLAN PASS**  
117.8 MLP  
Chan 125  
N47°27.41'-W115°38.76'  
L-13, H-1

ATIS  
126.65  
GND CON  
121.9  
MISSOULA TOWER \*  
118.4 377.175  
SPOKANE DEP CON  
124.9 298.95  
SALT LAKE CITY CENTER  
133.4 285.4



### TAKEOFF MINIMUMS

Rwy 30: Standard with minimum climb of 275' per NM to 7800.

NOTE: DME required.

NOTE: Chart not to scale.

### DEPARTURE ROUTE DESCRIPTION

**TAKEOFF RUNWAY 30:** Climb on MSO R-298 to cross DIDLY at or above 7800, thence on assigned transition or route.

**KALISPELL TRANSITION (DIDL5.FCA):** From over DIDLY, left turn on MSO R-298 to MSO VOR/DME, then on MSO R-344 to JESSY, then on MSO R-344 and FCA R-159 to FCA VOR/DME.

**MISSOULA TRANSITION (DIDL5.MSO):** From over DIDLY, left turn on MSO R-298 to MSO VOR/DME.

**MULLAN PASS TRANSITION (DIDL5.MLP):** From over DIDLY on MSO R-298 to ORONE, then on MLP R-095 to MLP VOR/DME.

**SALMON TRANSITION (DIDL5.LKT):** From over DIDLY left turn on MSO R-298 to MSO VOR/DME, then on MSO R-167 and LKT R-347 to LKT VOR/DME.

MISSOULA, MONTANA  
MISSOULA INTL (MSO)

# DIDL5 FIVE DEPARTURE

(DIDL5.DIDL5) 24MAY18

NW-1, 25 FEB 2021 to 25 MAR 2021

NW-1, 25 FEB 2021 to 25 MAR 2021