

WAAS CH 56615 W15A	APP CRS 155°	Rwy Ldg TDZE Apt Elev	5900 1403 1403
--	------------------------	-----------------------------	---

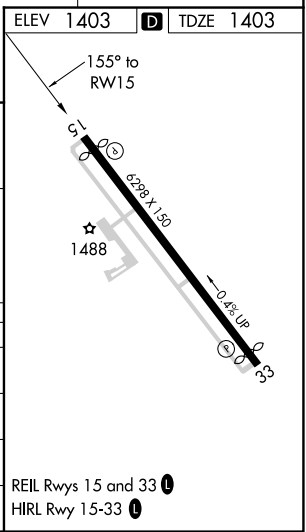
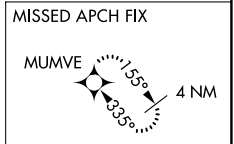
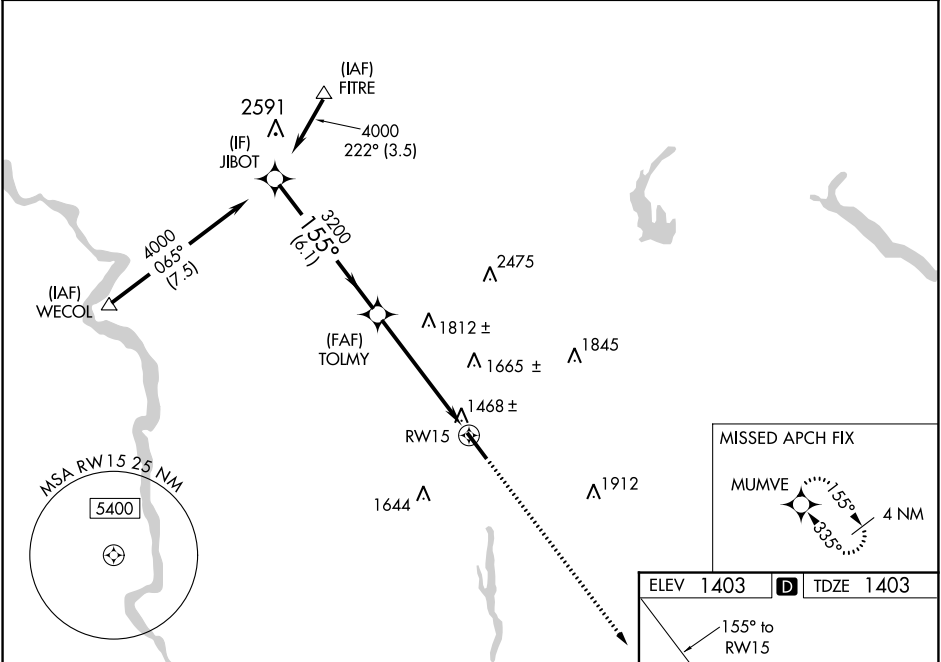
RNAV (GPS) RWY 15

SULLIVAN COUNTY INTL (MSV)

⚠ Baro-VNAV NA when using Newburgh altimeter setting. For uncompensated Baro-VNAV systems, LNAV/VNAV NA below -17°C (2°F) or above 46°C (114°F). DME/DME RNP-0.3 NA.
⚠ Helicopter visibility reduction below 3/4 SM NA. When local altimeter setting not received, use Newburgh altimeter setting and increase LPV DA to 1858 and visibility all Cats 1/2 mile, increase LNAV/VNAV DA to 2077 and visibility Cats A/B/C 1/4 mile, Cat D 1/2 mile; increase all MDA 220 feet and LNAV Cat B visibility 1/4 mile, Cats C/D 3/4 mile, Circling Cat B visibility 1/4 mile, Cat C 3/4 mile, Cat D 1/2 mile.

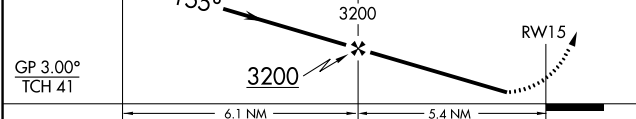
MISSED APPROACH: Climb to 3300 direct MUMVE and hold.

AWOS-3PT 124.725	NEW YORK APP CON 132.75 363.1	CLNC DEL 121.6	UNICOM 122.8 (CTAF) 0
----------------------------	---	--------------------------	---------------------------------



Procedure

Turn NA	JIBOT	3300	MUMVE
	4000	↑	✧
	155°		
		3200	
			RWY 15



CATEGORY	A	B	C	D
LPV DA	1653-1		250 (300-1)	
LNAV/VNAV DA	1872-1 3/4		469 (500-1 3/4)	
LNAV MDA	1980-1	577 (600-1)	1980-1 1/2 577 (600-1 1/2)	1980-1 3/4 577 (600-1 3/4)
CIRCLING	1980-1	577 (600-1)	1980-1 1/2 577 (600-1 1/2)	1980-2 577 (600-2)

REIL Rwy 15 and 33 **0**
 HIRL Rwy 15-33 **0**