

# RNAV (GPS) RWY 33

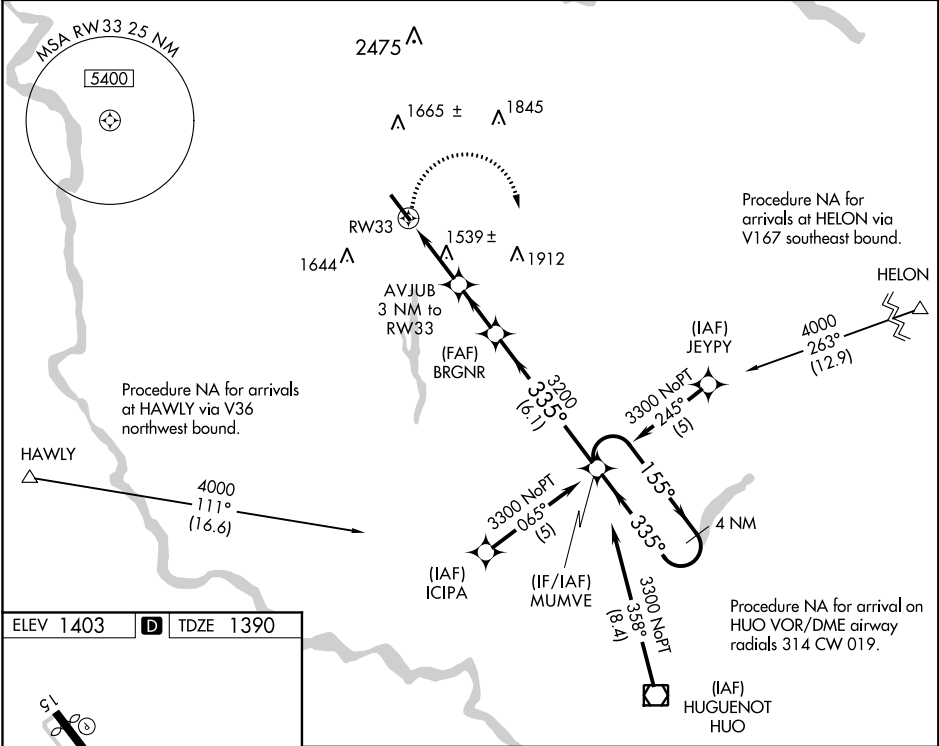
SULLIVAN COUNTY INTL (MSV)

APP CRS <b>335°</b>	Rwy Ldg TDZE Apt Elev	<b>5798</b> <b>1390</b> <b>1403</b>
------------------------	-----------------------------	---

**⚠** DME/DME RNP-0.3 NA. When local altimeter setting not received, use Newburgh altimeter setting and increase all MDA 220 feet, increase LNAV Cats C/D and Circling Cat C visibility ½ mile, Circling Cat D visibility ¼ mile. VDP NA when using Newburgh altimeter setting.

**MISSED APPROACH:** Climbing right turn to 3300 direct MUMVE and hold.

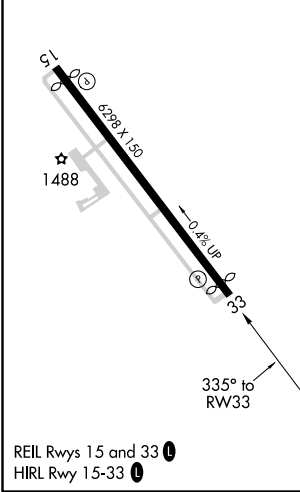
AWOS-3PT <b>124.725</b>	NEW YORK APP CON <b>132.75 363.1</b>	CLNC DEL <b>121.6</b>	UNICOM <b>122.8 (CTAF) ①</b>
----------------------------	---	--------------------------	---------------------------------



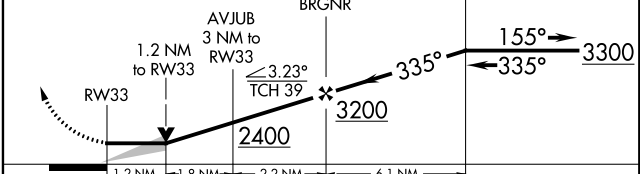
NE-2, 25 FEB 2021 to 25 MAR 2021

NE-2, 25 FEB 2021 to 25 MAR 2021

ELEV 1403	<b>D</b>	TDZE 1390
-----------	----------	-----------



**3300 MUMVE** VGSJ and descent angles not coincident (VGSJ Angle 3.00/TCH 39). **4 NM Holding Pattern**



CATEGORY	A	B	C	D
LNAV MDA	1820-1	430 (500-1)	1820-1¼ 430 (500-1¼)	1820-1½ 430 (500-1½)
CIRCLING	1900-1	497 (500-1)	1900-1½ 497 (500-1½)	1960-2 557 (600-2)