

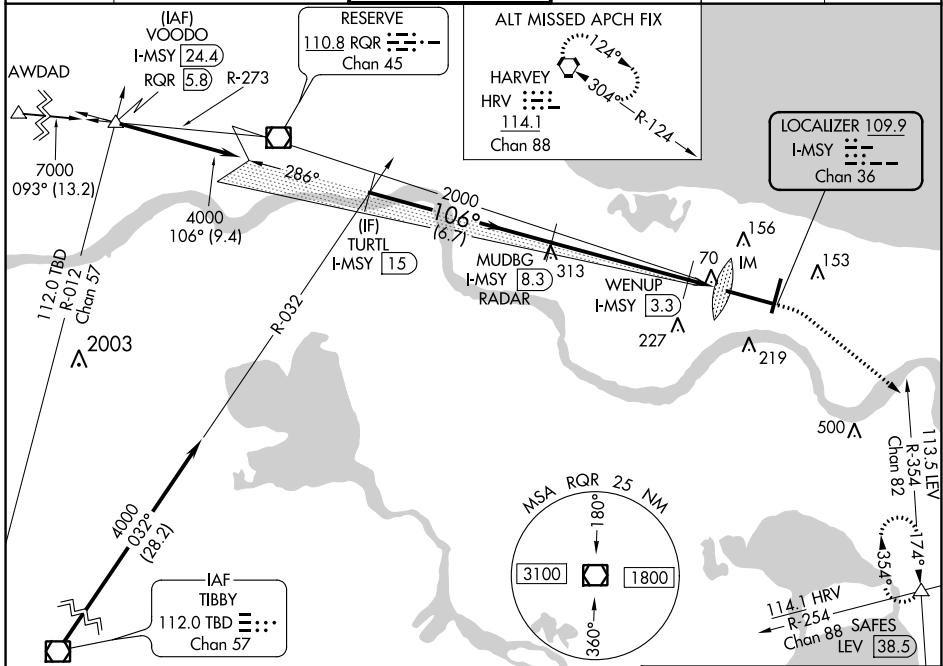
LOC/DME I-MSY <b>109.9</b> Chan <b>36</b>	APP CRS <b>106°</b>	Rwy Idg <b>9800</b> TDZE <b>4</b> Apt Elev <b>4</b>
---	------------------------	---

# ILS or LOC RWY 11

LOUIS ARMSTRONG NEW ORLEANS INTL (MSY)

RADAR or DME required.		ALSF-2	MISSED APPROACH: Climb to 800 then climbing right turn to 2000 on heading 130° and on LEV VORTAC R-354 to SAFES INT/LEV 38.5 DME and hold.		
For inop ALS, increase S-LOC 11 Cat C/D visibility to 1½ SM and increase WENUP fix minimums S-LOC 11 Cat C/D visibility to RVR 4500.					

D-ATIS <b>127.55</b>	NEW ORLEANS APP CON WEST <b>125.5 350.35</b> EAST <b>133.15 290.3</b>	NEW ORLEANS TOWER <b>119.5 254.3</b>	GND CON <b>121.9 273.525</b>	CLNC DEL <b>126.575</b>	CPDLC
-------------------------	---	---	---------------------------------	----------------------------	-------



TURTL I-MSY (15)	MUDBG I-MSY (8.3) RADAR	800	2000	SAFES	ELEV 4	TDZE 4
4000	2000	↑	hdg 130°	LEV R-354	106° 6.5 NM from FAF	
GS 2.80° TCH 56	2000	WENUP I-MSY (3.3)	*LOC only.	I-MSY (2.7)	I-MSY (1.8)	
6.7 NM	5 NM	0.6	0.8	0.1	RLLS Rwy 2 TDZ/CL Rwy 11 HIRL All Runways	
WENUP FIX MINIMUMS						
S-ILS 11	204/18		200 (200-½)			
S-LOC 11	500/24	496 (500-½)	500/50	496 (500-1)		
CIRCLING	520-1	516 (600-1)	580-1½	576 (600-1½)		
S-LOC 11	320/24		316 (400-½)			
CIRCLING	520-1	516 (600-1)	580-1½	576 (600-1½)		
			600-2	596 (600-2)		
FAF to MAP 6.5 NM Knots: 60 90 120 150 180 Min:Sec: 6:30 4:20 3:15 2:36 2:10						

SC-4, 25 FEB 2021 to 25 MAR 2021

SC-4, 25 FEB 2021 to 25 MAR 2021