

APP CRS	Rwy Idg	10000
340°	TDZE	5734
	Apt Elev	5759

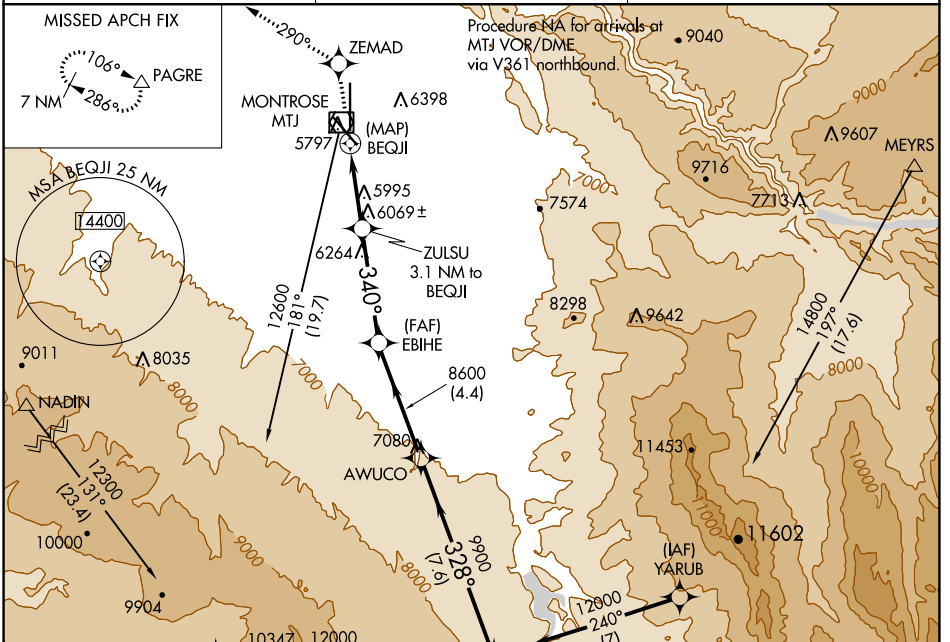
RNAV (GPS) RWY 35

MONTRÖSE RGNL (MTJ)

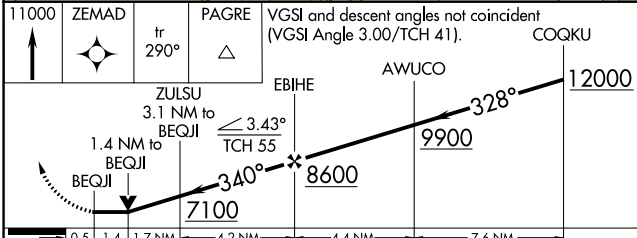
▼ DME/DME RNP-0.3 NA. Night landing Rwy 13 operational VGSI required, remain on or above VGSI glidepath until threshold.
▲ Night landing Rwy 31 NA. Helicopter visibility below 3/4 SM NA.

MISSED APPROACH: Climb to 11000 direct ZEMAD on track 290° to PAGRE and hold, continue climb-in-hold to 11000.

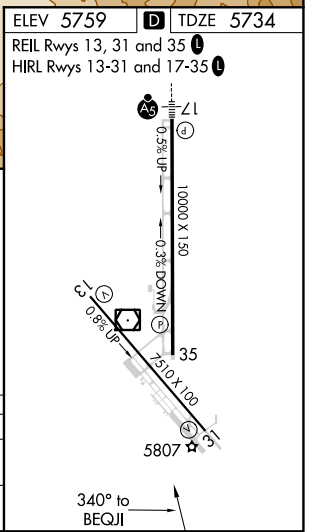
ASOS 135.225	DENVER CENTER 127.1 343.65	UNICOM 122.8 (CTAF)
------------------------	--------------------------------------	-------------------------------



ELEV 5759	D TDZE 5734
REIL Rws 13, 31 and 35	
HIRL Rws 13-31 and 17-35	



CATEGORY	A	B	C	D
LNVA MDA	6380-1 646 (700-1)	646 (700-1)	6380-1 3/4 646 (700-1 3/4)	6380-2 646 (700-2)
CIRCLING	6380-1 621 (700-1)	6420-1 661 (700-1)	6640-2 3/4 881 (900-2 3/4)	6700-3 941 (1000-3)



SW-1, 25 FEB 2021 to 25 MAR 2021

SW-1, 25 FEB 2021 to 25 MAR 2021