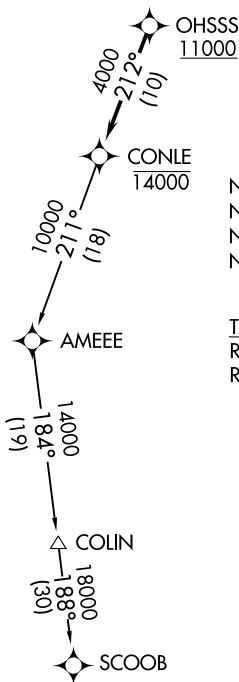


CONLE FOUR DEPARTURE (RNAV)

ATIS
 124.925
 CLNC DEL
 121.8 (when twr closed)
 GND CON
 121.8 253.4
 MARTIN TOWER ★
 121.3 (CTAF) 254.425
 UNICOM
 122.95
 POTOMAC DEP CON
 119.7 290.475

**TOP ALTITUDE:
ASSIGNED BY ATC**



NOTE: RNAV 1.
 NOTE: DME/DME/IRU or GPS required.
 NOTE: RADAR required.
 NOTE: For turbojet aircraft only.

TAKEOFF MINIMUMS:

Rwy 15: Standard.
 Rwy 33: 300-1³/₈ or standard with minimum climb of 215' per NM to 1100.

NOTE: Chart not to scale.

NE-3, 25 FEB 2021 to 25 MAR 2021

NE-3, 25 FEB 2021 to 25 MAR 2021

DEPARTURE ROUTE DESCRIPTION

Climb on assigned heading to ATC assigned altitude, for vectors to cross OHSSS at or above 11000, then on track 212° to cross CONLE at or below 14000, then on assigned transition. Expect filed altitude within 10 minutes after departure.

COLIN TRANSITION (CONLE4.COLIN)

SCOOB TRANSITION (CONLE4.SCOOB)