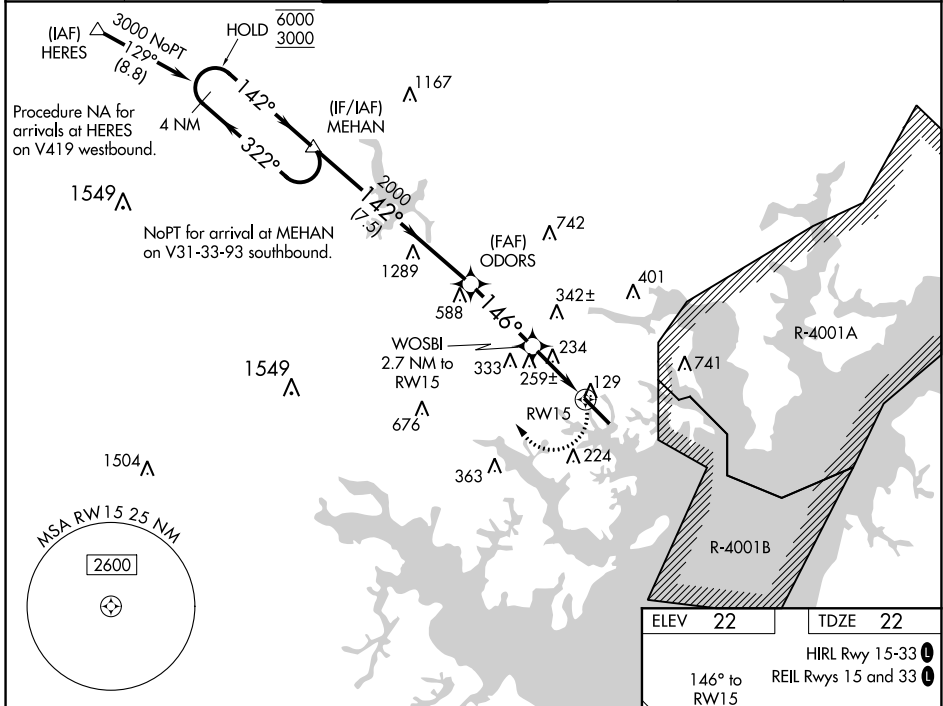


WAAS CH 45622 W15A	APP CRS 146°	Rwy ldg TDZE Apt Elev	6997 22 22
--	------------------------	-----------------------------	---------------------------------------

RNAV (GPS) RWY 15

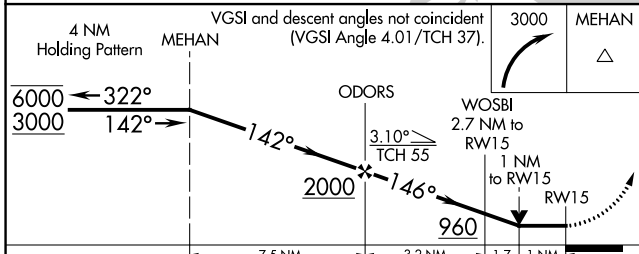
MARTIN STATE (MTN)

RNP APCH.		<p>▼ Rwy 15 helicopter visibility reduction below $\frac{3}{4}$ SM NA. When local altimeter setting not received, use Baltimore/Washington Intl Thurgood Marshall altimeter setting and increase all MDA 60 feet and increase LP Cats C and D visibility $\frac{1}{8}$ SM, LNAV Cats C and D visibility $\frac{1}{4}$ SM, Circling Cat D visibility $\frac{1}{4}$ SM.</p>		<p>MISSED APPROACH: Climbing right turn to 3000 direct MEHAN and hold.</p>	
ATIS 124.925	POTOMAC APP CON 119.0 282.275	MARTIN TOWER * 121.3 (CTAF) 0 254.425	GND CON 121.8 253.4	CLNC DEL 121.8 (when twr closed)	UNICOM 122.95

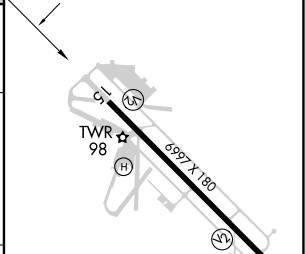


NE-3, 25 FEB 2021 to 25 MAR 2021

NE-3, 25 FEB 2021 to 25 MAR 2021



ELEV 22	TDZE 22
HIRL Rwy 15-33 REIL Rwys 15 and 33	



CATEGORY	A	B	C	D
LP MDA	500-1	478 (500-1)	500- $\frac{1}{8}$	478 (500- $\frac{1}{8}$)
LNAV MDA	520-1	498 (500-1)	520- $\frac{1}{8}$	498 (500- $\frac{1}{8}$)
CIRCLING	560-1	538 (600-1)	560- $\frac{1}{2}$ 538 (600- $\frac{1}{2}$)	680-2 658 (700-2)

Rwy 33 ldg 8100'
(Military Operations Only)
Rwy 15 take-off 8100'
(Military Operations Only)