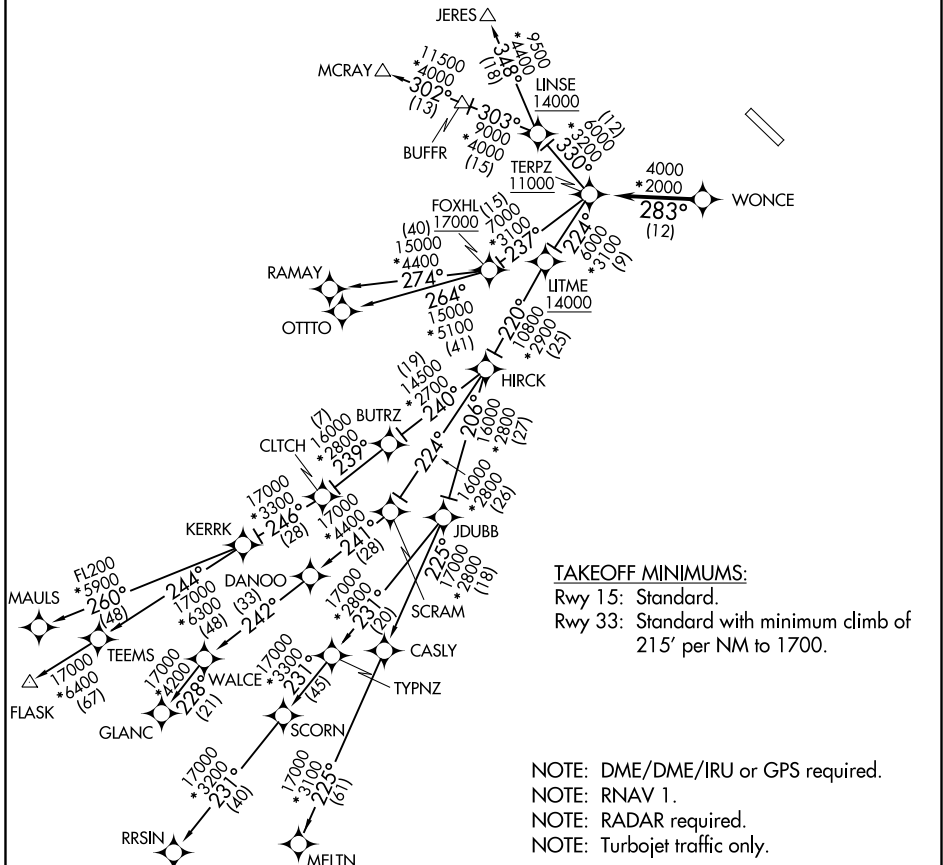


# TERPZ SEVEN DEPARTURE (RNAV)

ATIS  
 124.925  
 CLNC DEL  
 121.8 (when twr closed)  
 GND CON  
 121.8 253.4  
 MARTIN TOWER ★  
 121.3 (CTAF) 254.425  
 UNICOM  
 122.95  
 POTOMAC DEP CON  
 119.7 290.475

**TOP ALTITUDE:**  
**RAMAY, OTTTO, MAULS, FLASK,**  
**RRSIN, GLANC, MELTN**  
**TRANSITIONS: 17000**  
**JERES, MCRAJ TRANSITIONS:**  
**16000**



**TAKEOFF MINIMUMS:**  
 Rwy 15: Standard.  
 Rwy 33: Standard with minimum climb of 215' per NM to 1700.

NOTE: DME/DME/IRU or GPS required.  
 NOTE: RNAV 1.  
 NOTE: RADAR required.  
 NOTE: Turbojet traffic only.

NOTE: Chart not to scale.

# TERPZ SEVEN DEPARTURE (RNAV)

NE-3, 25 FEB 2021 to 25 MAR 2021

NE-3, 25 FEB 2021 to 25 MAR 2021