

FORT INDIANTOWN GAP, PENNSYLVANIA

# RNAV (GPS)-B

APCH CRS <b>054°</b>	Rwy Idg TDZE Arprt Elev	N/A N/A <b>487</b>
-------------------------	-------------------------------	--------------------------

AL-6422 (USA)

MUIR AAF (KMUI)

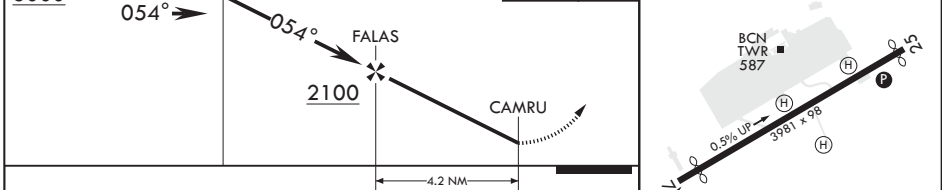
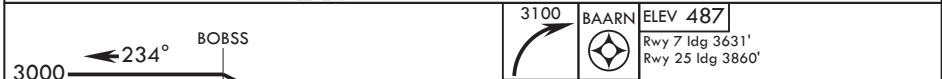
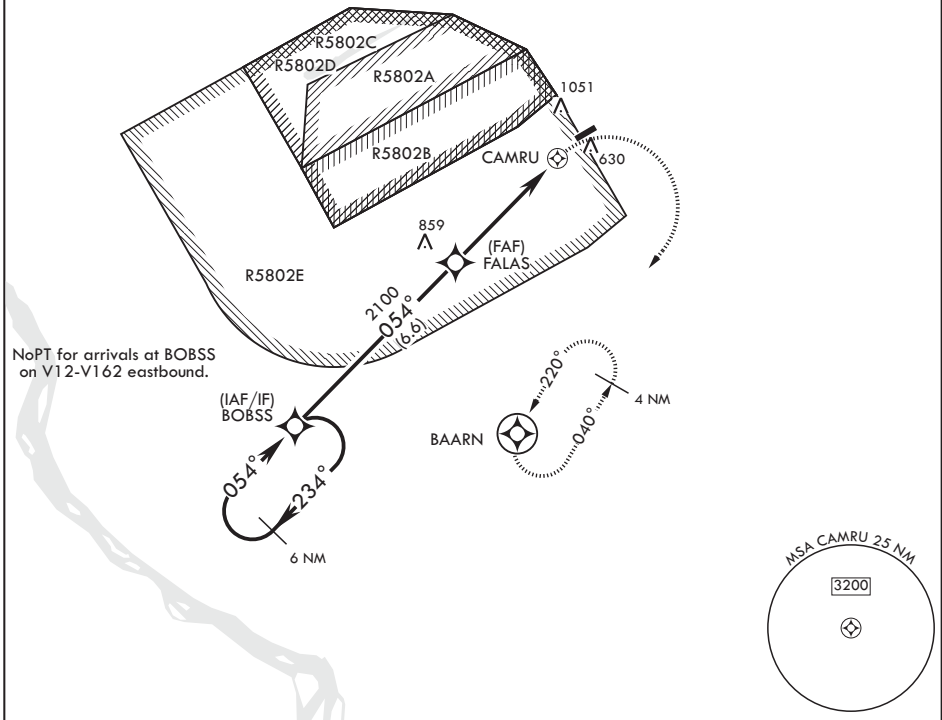
**⚠** Circling N of Rwy 7-25 not authorized.  
**⚠** DME/DME RNP-0.3 NA  
 Helicopter visibility reduction below 1 SM NA.

MISSED APPROACH: Climbing right turn to 3100 direct BAARN and hold.

ASOS <b>124.175</b>	HARRISBURG APP CON/DEP CON <b>118.25 269.45</b>	TOWER* <b>126.2 (CTAF) 290.5</b>	GND CON <b>121.625 269.525</b>
------------------------	--	-------------------------------------	-----------------------------------

When local altimeter setting not received, use Harrisburg Intl altimeter setting: increase all MDA 80 feet and CAT BC vis 1/4 SM.

1775



CATEGORY	A	B	C	D
<b>C</b> CIRCLING	1420-1 1/4	933 (1000-1 1/4)	1420-2 3/4 933 (1000-2 3/4)	NA

FORT INDIANTOWN GAP, PENNSYLVANIA

40°26'N - 76°34'W

MUIR AAF (KMUI)

Amdt 2A 10SEP20

# RNAV (GPS)-B

NE-4, 25 FEB 2021 to 25 MAR 2021

NE-4, 25 FEB 2021 to 25 MAR 2021

REIL all Rwys  
MIRL all Rwys