

HI-ILS or LOC Y RWY 12

LOC I-MUO 110.3	APCH CRS 122°	Rwy Idg 13,510 TDZE 2987 Arprt Elev 2996
---------------------------	-------------------------	---

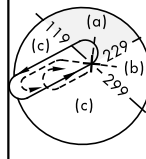
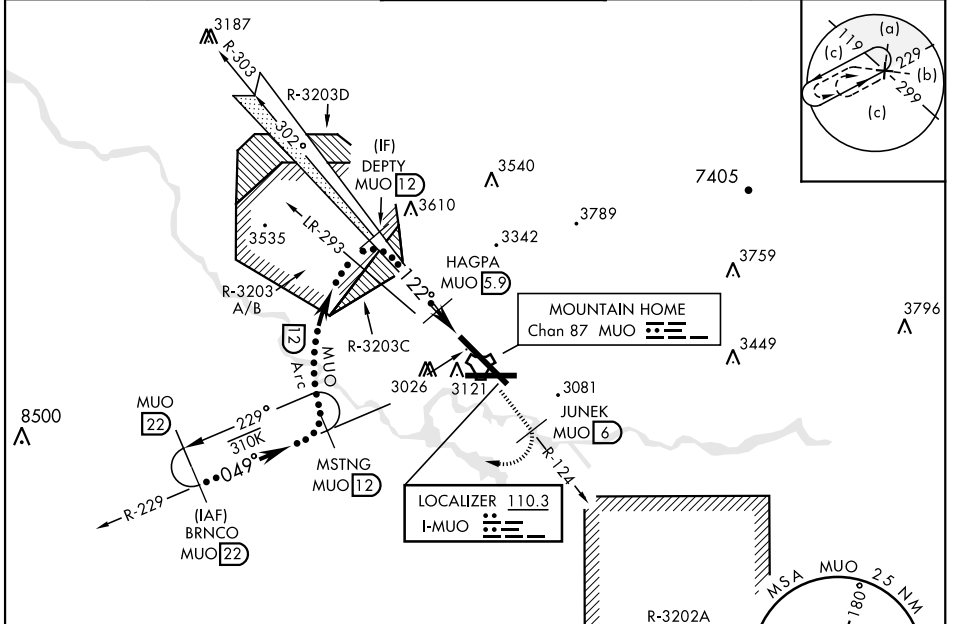
JAL-323 [USAF]

MOUNTAIN HOME AFB (KMUO)

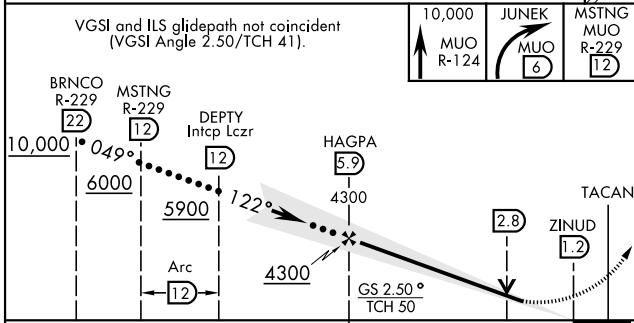
▼ * When ALS inop, increase CAT CDE RVR to 40 and vis to 3/4 mile.
 ** When ALS inop, increase CAT CDE vis to 1 1/2 miles.
 *** Circling NA NE of Rwy 12-30.

ALS-F-1 MISSED APPROACH: Climb to 10,000 via MUO R-124 to JUNEK/6 DME, turn right and intercept MUO R-229 to MSTNG/12 DME and hold. Continue climb in hold to 10,000.

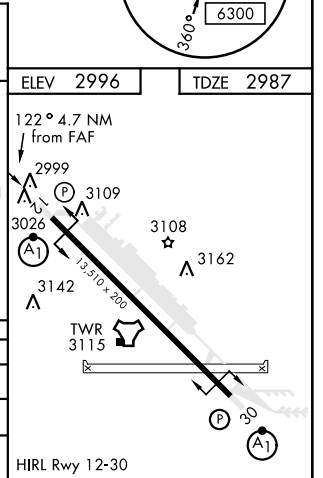
ATIS 273.5	MOUNTAIN HOME APP CON 124.8 259.1	MOUNTAIN HOME TOWER 133.85 253.5	GND CON 120.5 275.8	CLNC DEL 127.1 290.425
----------------------	---	--	-------------------------------	----------------------------------



RADAR or DME REQUIRED
 EMERG SAFE ALT 100 NM 14,200



CATEGORY	C	D	E
S-ILS 12 *	3190/24	203	(200-1/2)
S-LOC 12 **	3460/50	473	(500-1)
CIRCLING ***	3560-1 1/2 564 (600-1 1/2)	3560-2 564 (600-2)	3700-2 1/2 704 (800-2 1/2)



HI-ILS or LOC Y RWY 12

NW-1, 25 FEB 2021 to 25 MAR 2021

NW-1, 25 FEB 2021 to 25 MAR 2021