

# TACAN Z RWY 12

MOUNTAIN HOME AFB (KMUO)

TACAN MUO Chan 87	APCH CRS 129°	Rwy Idg 13,510 TDZE 2987 Arprt Elev 2996
-------------------	---------------	--

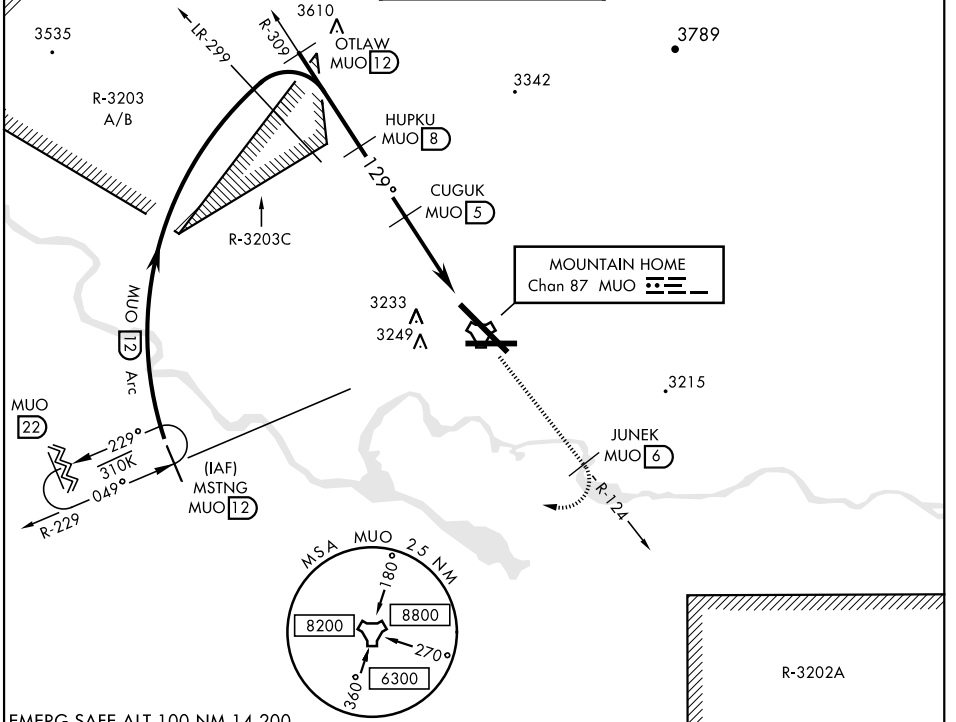
AL-323 [USAF]

▼ \* When ALS inop, increase CAT AB RVR to 55 and vis to 1 mile, CAT CDE vis to 1 3/8 miles.  
 \*\* Circling NA NE of Rwy 12-30.



**MISSED APPROACH:** Climb to 10,000 via MUO R-124 to JUNEK/6 DME, turn right and intercept MUO R-229 to MSTNG/12 DME and hold. Continue climb in hold to 10,000.

ATIS 273.5	MOUNTAIN HOME APP CON 124.8 259.1	MOUNTAIN HOME TOWER 133.85 253.5	GND CON 120.5 275.8	CLNC DEL 127.1 290.425
------------	-----------------------------------	----------------------------------	---------------------	------------------------

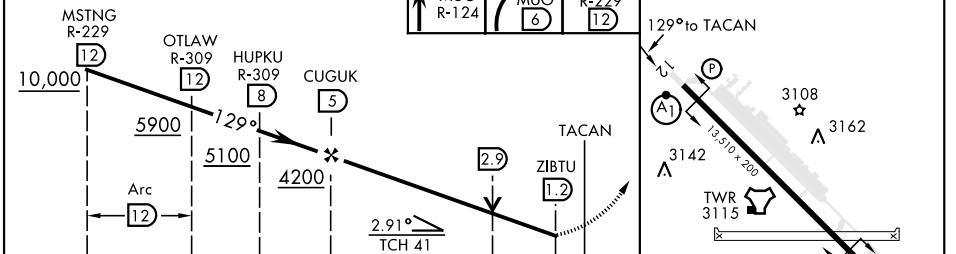


NW-1, 25 FEB 2021 to 25 MAR 2021

NW-1, 25 FEB 2021 to 25 MAR 2021

EMERG SAFE ALT 100 NM 14,200

VGSI and descent angles not coincident (VGSI Angle 2.50/TCH 41).



CATEGORY	A	B	C	D	E
S-12 *	3480/40	493 (500-3/4)	3480/50	493 (500-1)	
<b>C</b> CIRCLING **	3520-1 524 (600-1)	3560-1 564 (600-1)	3560-1 1/2 564 (600-1 1/2)	3560-2 564 (600-2)	3700-2 1/2 704 (800-2 1/2)

HIRL Rwy 12-30

# TACAN Z RWY 12