

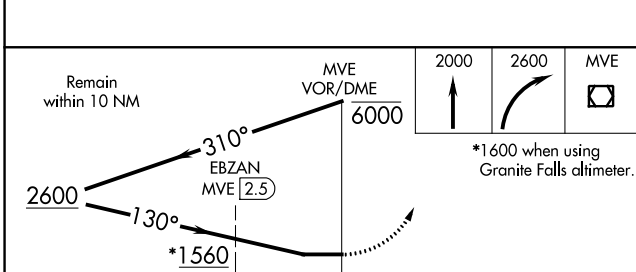
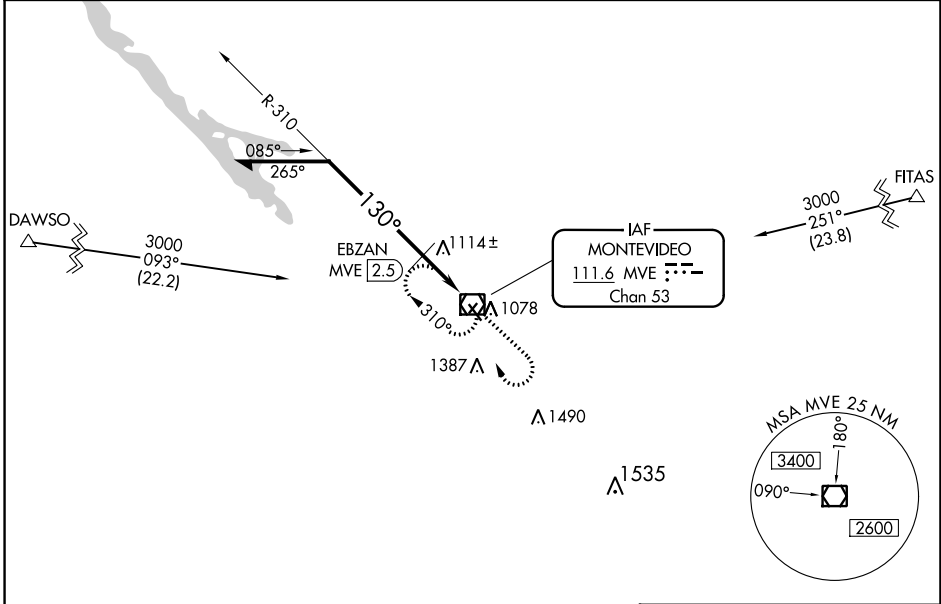
VOR/DME MVE 111.6 Chan 53	APP CRS 130°	Rwy Idg TDZE Apt Elev	3999 1034 1035
---	------------------------	-----------------------------	---

VOR RWY 14
MONTEVIDEO-CHIPPEWA COUNTY (MVE)

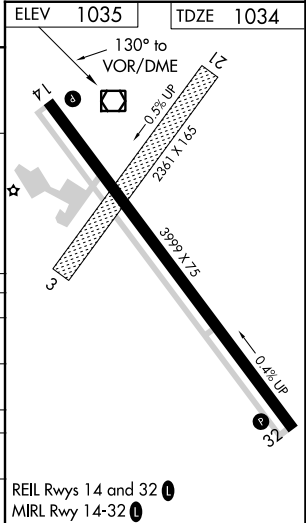
NA When local altimeter setting not received, use Granite Falls altimeter setting and increase all MDA 40 feet, increase S-14 Cats C and D visibility 1/8 mile, Circling Cat C visibility 1/8 mile and Cat D visibility 1/4 mile. Increase EBZAN fix Minimums S-14 Cats C and D visibility 1/8 mile and Circling Cat D visibility 1/4 mile. When VGSI inop, Straight-In/Circling Rwy 14 Procedure NA at night. Rwy 14 helicopter visibility reduction below 1 SM NA. Circling to Rwy 3-21 NA.

MISSED APPROACH: Climb to 2000 then climbing right turn to 2600 direct MVE VOR/DME and hold.

AWOS-3 111.6	MINNEAPOLIS CENTER 125.5 323.1	UNICOM 122.8 (CTAF) 0
------------------------	--	---------------------------------



CATEGORY	A		B		C		D	
	1	2	1	2	1	2	1	2
S-14	1560-1	526 (600-1)	1560-1 1/2	526 (600-1 1/2)	1560-1 1/2	526 (600-1 1/2)	1700-2	665 (700-2)
CIRCLING	1560-1	525 (600-1)	1560-1 1/2	525 (600-1 1/2)	1560-1 1/2	525 (600-1 1/2)	1700-2	665 (700-2)
EBZAN FIX MINIMUMS								
S-14	1380-1		346 (400-1)					
CIRCLING	1560-1	525 (600-1)	1560-1 1/2	525 (600-1 1/2)	1700-2	665 (700-2)		



NC-1, 25 FEB 2021 to 25 MAR 2021

NC-1, 25 FEB 2021 to 25 MAR 2021