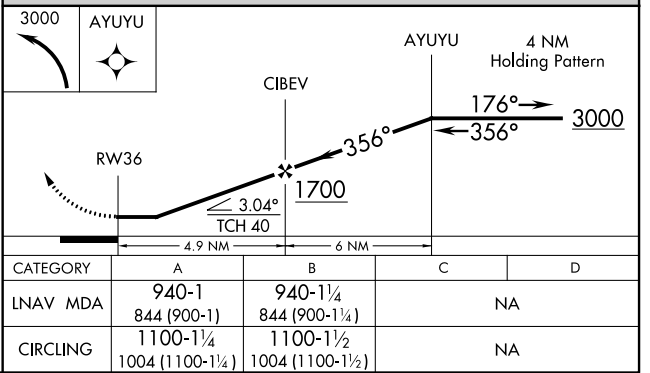
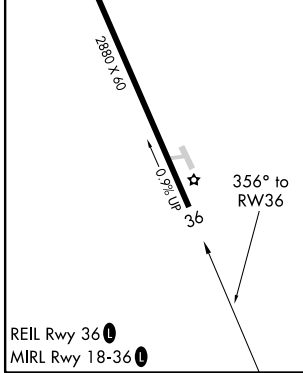
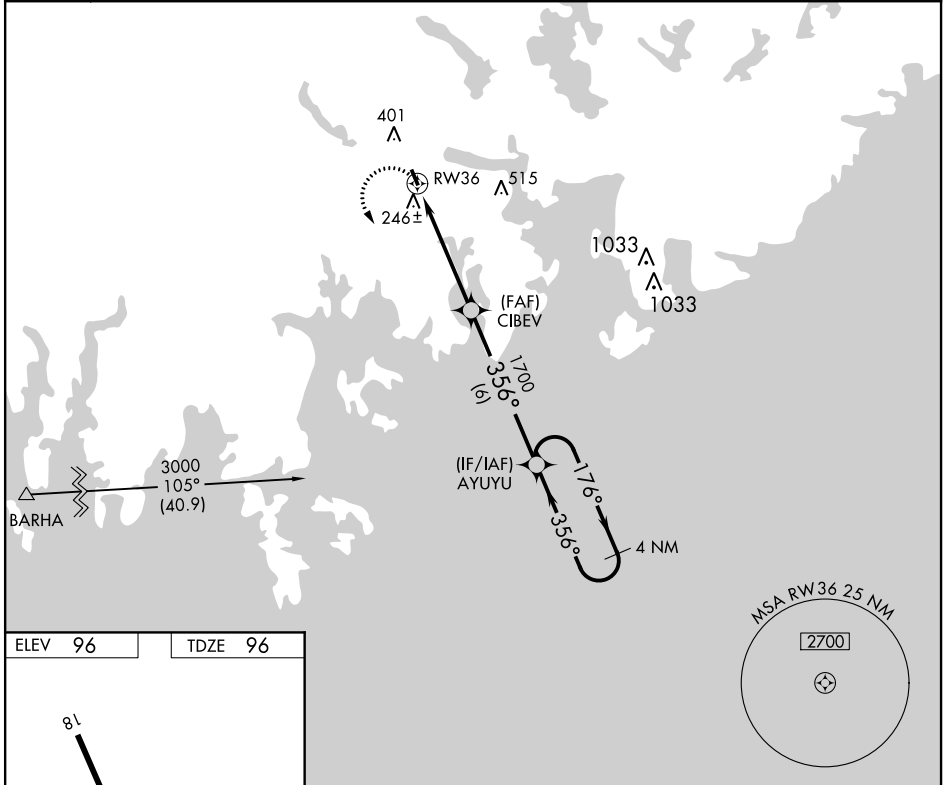


APP CRS 356°	Rwy Idg 2880
	TDZE 96
	Apt Elev 96

RNAV (GPS) RWY 36

MACHIAS VALLEY (MVM)

<p>NA Procedure NA at night. Helicopter visibility reduction below 1 SM NA. DME/DME RNP-0.3 NA. Use Bar Harbor altimeter setting, if not received, use Bangor altimeter setting and increase all MDAs 60 feet.</p>	<p>MISSED APPROACH: Climbing left turn to 3000 direct AYUYU and hold.</p>	
	<p>AWOS-AV 122.8</p>	<p>BOSTON CENTER 124.25 290.5</p>



NE-1, 25 FEB 2021 to 25 MAR 2021

NE-1, 25 FEB 2021 to 25 MAR 2021