


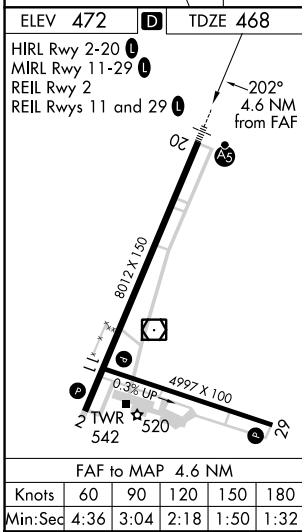
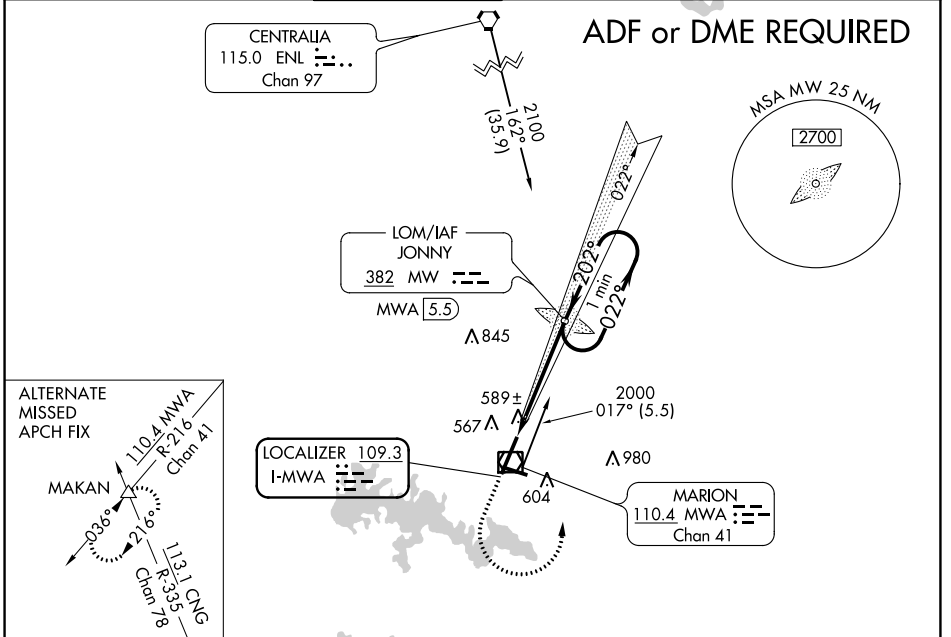
LOC I-MWA 109.3	APP CRS 202°	Rwy Idg 8012 TDZE 468 Apt Elev 472
---------------------------	------------------------	---

ILS or LOC RWY 20
VETERANS AIRPORT OF SOUTHERN ILLINOIS (MWA)

ADF required. If local altimeter setting not received, use Carbondale-Murphysboro altimeter setting and increase all DA/MDAs 40 feet. Circling Rwy 11 NA at night.

MALSR  **MISSED APPROACH:** Climb to 1500 then climbing left turn to 2000 direct JONNY LOM/MWA 5.5 DME and hold.

AWOS-3 119.675	KANSAS CITY CENTER 127.475 346.275	MARION TOWER ★ 128.4 (CTAF) 0	CLNC DEL 127.475 (When twr closed)	GND CON 121.7	UNICOM 122.95
--------------------------	--	---	--	-------------------------	-------------------------



MARION, ILLINOIS
Amdt 12B 17AUG17

VETERANS AIRPORT OF SOUTHERN ILLINOIS (MWA)
37°45'N-89°01'W
ILS or LOC RWY 20

EC-3, 25 FEB 2021 to 25 MAR 2021

EC-3, 25 FEB 2021 to 25 MAR 2021