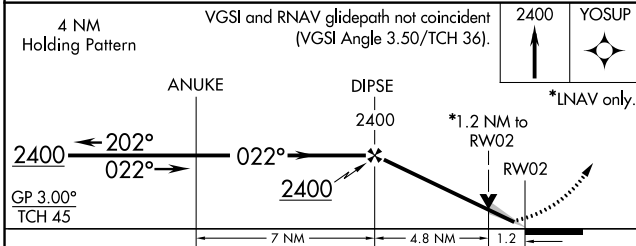
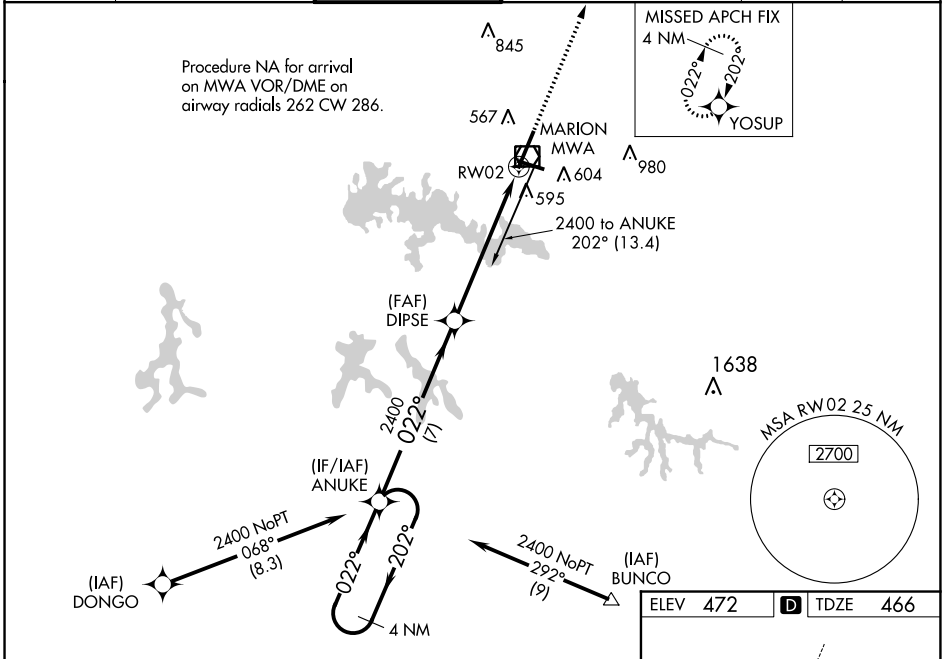


WAAS CH <b>61230</b> <b>W02A</b>	APP CRS <b>022°</b>	Rwy Idg TDZE <b>466</b> Apt Elev <b>472</b>	<b>8012</b>
--	------------------------	---	-------------

# RNAV (GPS) RWY 2

VETERANS AIRPORT OF SOUTHERN ILLINOIS (MWA)

<p><b>▼</b> For uncompensated Baro-VNAV systems, LNAV/VNAV NA below -15°C (5°F) or above 54°C (130°F). DME/DME RNP-0.3 NA. When local altimeter setting not received, use Carbondale/Murphysboro altimeter setting and increase all DA/MDA 40 feet, and increase LNAV/VNAV all Cats and LNAV Cat C and D visibility 1/8 mile. Baro-VNAV and VDP NA when using Carbondale/Murphysboro altimeter setting. Circling Rwy 11 NA at night.</p>		<p><b>MISSED APPROACH:</b> Climb to 2400 direct YOSUP and hold.</p>	
AWOS-3 <b>119.675</b>	KANSAS CITY CENTER <b>127.475 346.275</b>	MARION TOWER ★ <b>128.4 (CTAF) 0</b>	CLNC DEL <b>127.475</b> (When twr closed)
GND CON <b>121.7</b>		UNICOM <b>122.95</b>	



CATEGORY	A	B	C	D
LPV DA		666-3/4	200 (200-3/4)	
LNAV/VNAV DA		753-1	287 (300-1)	
LNAV MDA	940-1	474 (500-1)	940-1 3/8	474 (500-1 3/8)
CIRCLING	940-1	468 (500-1)	940-1 1/2	1040-2
			468 (500-1 1/2)	568 (600-2)

