

VOR/DME MWA 110.4 Chan 41	APP CRS 027°	Rwy Idg 8012 TDZE 466 Apt Elev 472
---	------------------------	---

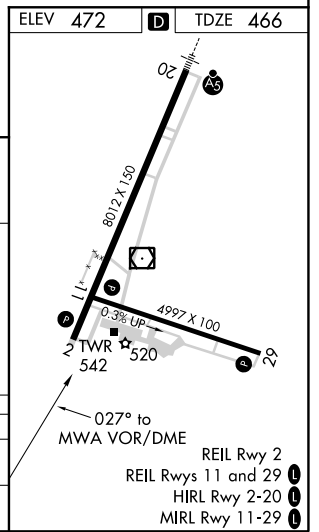
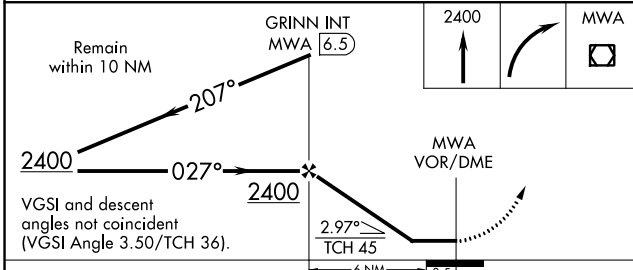
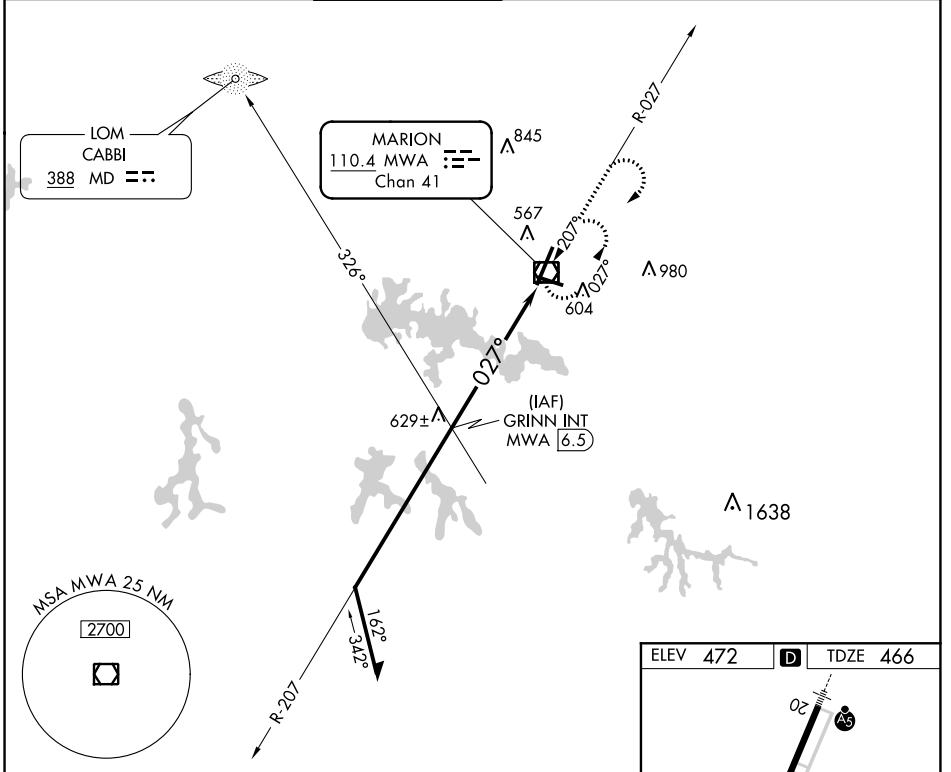
VOR RWY 2

VETERANS AIRPORT OF SOUTHERN ILLINOIS (MWA)

ADF or DME required. Circling Rwy 11 NA at night. Helicopter visibility reduction below 3/4 SM NA. If local altimeter setting not received, use Carbondale-Murphysboro altimeter setting and increase all MDAs 40 feet.

MISSED APPROACH: Climb to 2400 then right turn direct MWA VOR/DME and hold.

AWOS-3 119.675	KANSAS CITY CENTER 127.475 346.275	MARION TOWER ★ 128.4 (CTAF) 0	CLNC DEL 127.475 (When twr closed)	GND CON 121.7	UNICOM 122.95
--------------------------	--	--	--	-------------------------	-------------------------



CATEGORY	A	B	C	D
S-2	900-1 434 (500-1)		900-1½ 434 (500-1¼)	900-1½ 434 (500-1½)
CIRCLING	920-1 448 (500-1)	940-1 468 (500-1)	940-1½ 468 (500-1½)	1040-2 568 (600-2)

EC-3, 25 FEB 2021 to 25 MAR 2021

EC-3, 25 FEB 2021 to 25 MAR 2021