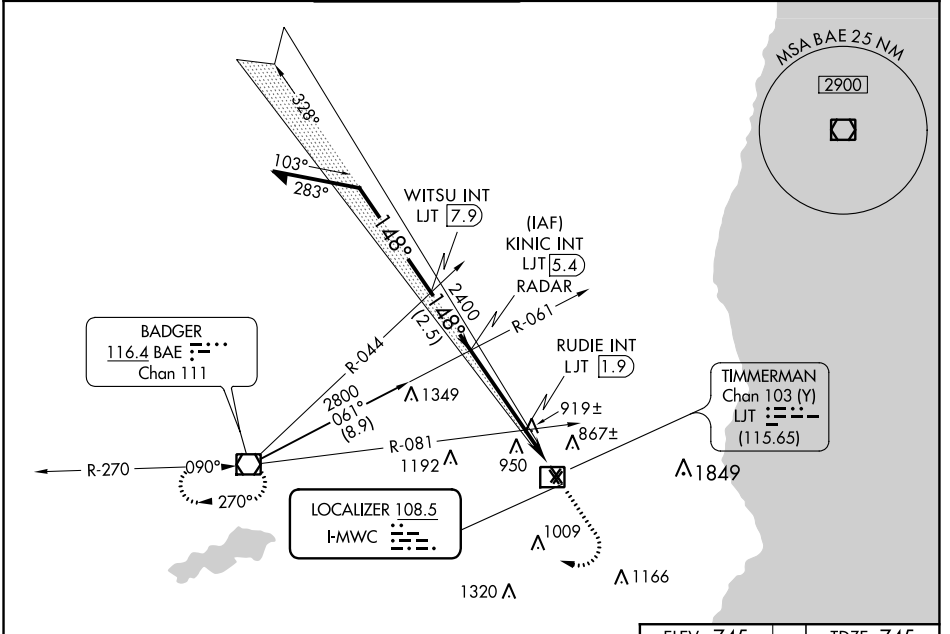


LOC I-MWC <b>108.5</b>	APP CRS <b>148°</b>	Rwy Idg TDZE Apt Elev	<b>4103</b> <b>745</b> <b>745</b>
---------------------------	------------------------	-----------------------------	---

# LOC RWY 15L

LAWRENCE J TIMMERMAN (MWC)

<p><b>▼</b> Circling NA to Rwys 4R, 15R, 22L and 33L. Rwy 15L helicopter visibility reduction below 3/4 SM NA. # Simultaneous reception of I-MWC and LJT DME required.</p>			<p><b>MISSED APPROACH:</b> Climb to 3000 then right turn direct BAE VOR/DME and hold.</p>		
ATIS <b>128.3</b>	MILWAUKEE APP CON <b>125.35 307.0</b>	<b>TIMMERMAN TOWER ★</b> <b>120.5 (CTAF) ①</b>	GND CON <b>121.7</b>	CINC DEL <b>121.7</b> (When twr closed)	UNICOM <b>122.95</b>



\* 1320 when using General Mitchell Intl altimeter setting. Remain within 10 NM

KINIC INT LJT 5.4 RADAR

3000 BAE

2800 WITSU INT LJT 7.9

2700 RUDIE INT LJT 1.9

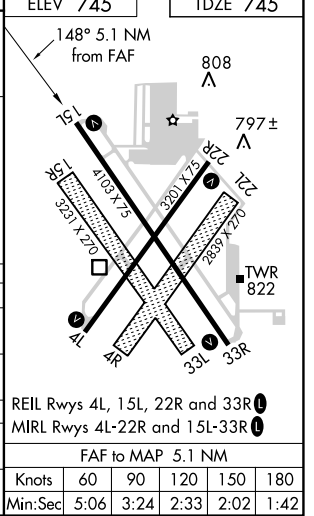
2400

3.01° TCH 41

\*1280

2.5 NM 3.5 NM 1.6 NM

CATEGORY	A	B	C	D
S-LOC 15L	1280-1	535 (600-1)	1280-1½	535 (600-1½)
CIRCLING	1280-1 535 (600-1)	1340-1 595 (600-1)	1340-1½ 595 (600-1½)	1340-2 595 (600-2)
RUDIE FIX MINIMUMS (DUAL VOR RECEIVERS OR DME REQUIRED #)				
S-LOC 15L	1180-1	435 (500-1)	1180-1¼	435 (500-1¼)
CIRCLING	1220-1 475 (500-1)	1340-1 595 (600-1)	1340-1½ 595 (600-1½)	1340-2 595 (600-2)



EC-3, 25 FEB 2021 to 25 MAR 2021

EC-3, 25 FEB 2021 to 25 MAR 2021