

WAAS CH <b>69524</b> <b>W22A</b>	APP CRS <b>218°</b>	Rwy Idg TDZE Apt Elev	<b>3201</b> <b>739</b> <b>745</b>
--	------------------------	-----------------------------	---

# RNAV (GPS) RWY 22R

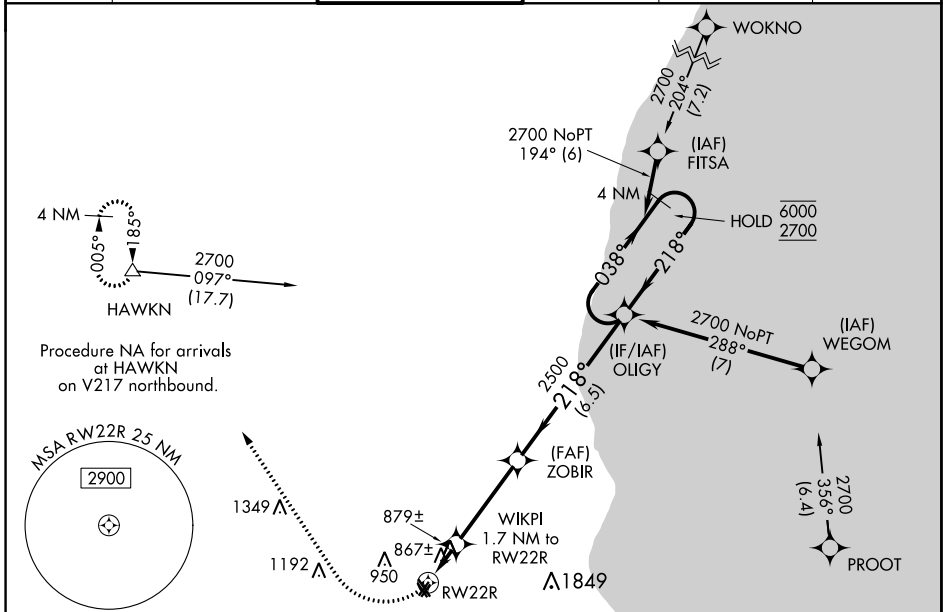
LAWRENCE J TIMMERMAN (MWC)

RNP APCH.

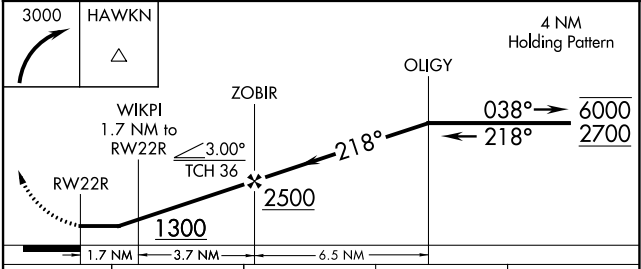
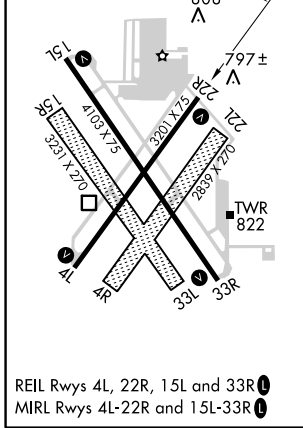
▼ Circling NA to Rwy 4R, 15R, 22L, and 33L. Rwy 22R helicopter visibility reduction below ½ SM NA. When local altimeter setting not received, use General Mitchell Intl altimeter setting and increase all MDAs 40 feet and LP and LNAV visibility Cats C and D ½ SM and Circling visibility Cat C ¼ SM.

MISSED APPROACH: Climbing right turn to 3000 direct HAWKN and hold.

ATIS <b>128.3</b>	MILWAUKEE APP CON <b>125.35 307.0</b>	TIMMERMAN TOWER ★ <b>120.5 (CTAF) 0</b>	GND CON <b>121.7</b>	CLNC DEL <b>121.7</b> (When twr closed)	UNICOM <b>122.95</b>
----------------------	--	--	-------------------------	---	-------------------------



ELEV 745	TDZE 739
----------	----------



CATEGORY	A	B	C	D
LP MDA	1160-1	421 (500-1)	1160-1¼	421 (500-1¼)
LNAV MDA	1160-1	421 (500-1)	1160-1¼	421 (500-1¼)
CIRCLING	1220-1 475 (500-1)	1340-1 595 (600-1)	1340-1½ 595 (600-1½)	1340-2 595 (600-2)

EC-3, 25 FEB 2021 to 25 MAR 2021

EC-3, 25 FEB 2021 to 25 MAR 2021