

APP CRS	Rwy Idg	13503
144°	TDZE	1169
	Apt Elev	1189

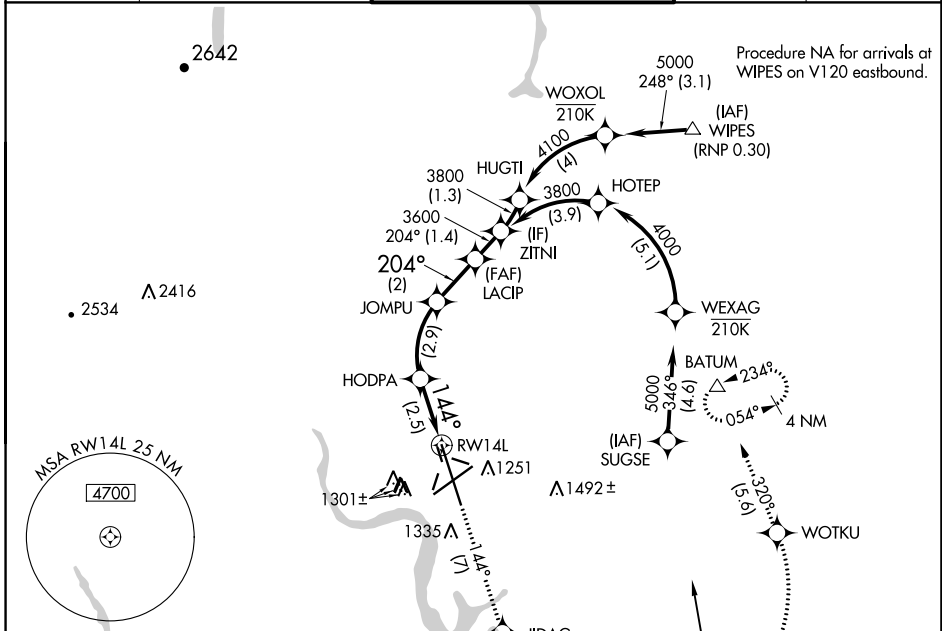
RNAV (RNP) Z RWY 14L

GRANT COUNTY INTL (MWH)

V For uncompensated Baro-VNAV systems, procedure NA below -17°C (2°F) or above 47°C (116°F).
RF required. GPS required.

MISSED APPROACH: Climb to 4000 on track 144° to JIDAG left turn to WOTKU and track 320° to BATUM and hold.

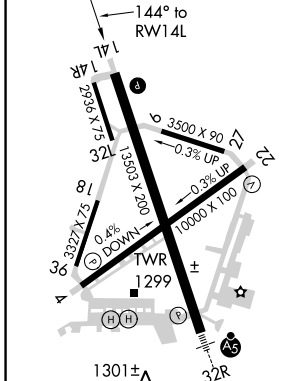
ATIS	GRANT COUNTY APP CON *	GRANT COUNTY TOWER *	GND CON	UNICOM
119.05	126.4 379.95	118.25 (CTAF) 0 257.8 (EAST) 128.0 257.8 (WEST)	121.9	122.95



NW-1, 25 FEB 2021 to 25 MAR 2021

NW-1, 25 FEB 2021 to 25 MAR 2021

ELEV 1189	D	TDZE 1169
-----------	----------	-----------



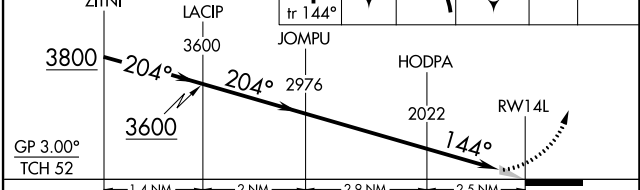
REIL Rwy 4 (I)

REIL Rwy 14L and 22

HIRL Rwy 14L-32R

MIRL Rwy 4-22 and 18-36

VGSI and RNAV glidepath not coincident (VGSI Angle 3.00/TCH 75).	4000	JIDAG	WOTKU	BATUM
ZITNI	LACIP	JOMPU	HODPA	tr 320°
3800	3600	2976	2022	RWY 14L



CATEGORY	A	B	C	D
RNP 0.10 DA		1419-¾	250 (300-¾)	
RNP 0.30 DA		1479-1	310 (300-1)	

AUTHORIZATION REQUIRED