

APP CRS	Rwy Idg	<b>10000</b>
<b>216°</b>	TDZE	<b>1166</b>
	Apt Elev	<b>1189</b>

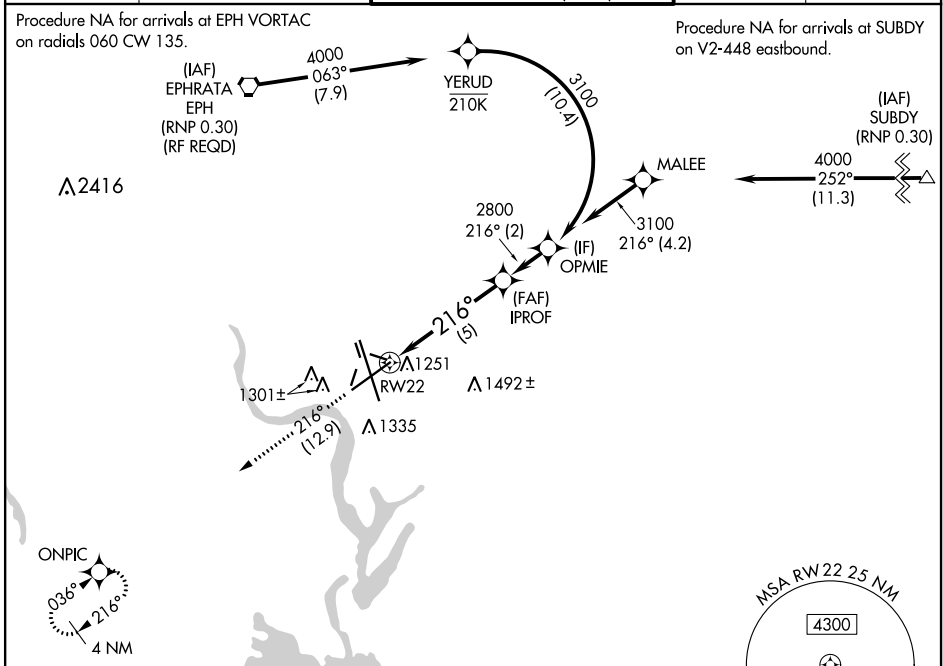
# RNAV (RNP) Z RWY 22

GRANT COUNTY INTL (MWH)

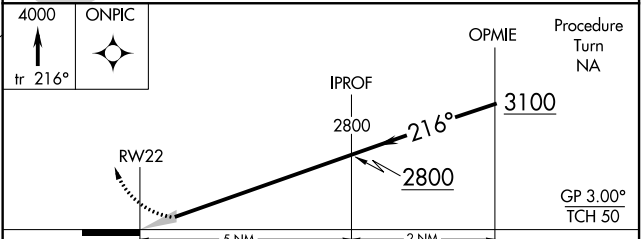
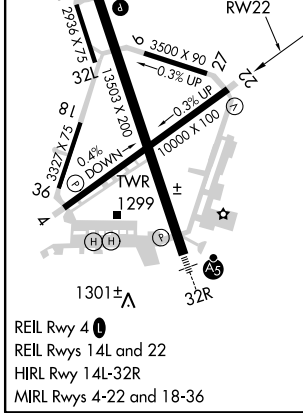
**▽** For uncompensated Baro-VNAV systems, procedure NA below -17°C (2°F) or above 46°C (114°F). GPS required.

**MISSED APPROACH:** Climb to 4000 on track 216° to ONPIC and hold.

ATIS <b>119.05</b>	GRANT COUNTY APP CON * <b>126.4 379.95</b>	GRANT COUNTY TOWER * <b>118.25 (CTAF) 257.8 (EAST)</b> <b>128.0 257.8 (WEST)</b>	GND CON <b>121.9</b>	UNICOM <b>122.95</b>
-----------------------	---	--	-------------------------	-------------------------



ELEV	<b>1189</b>	<b>D</b>	TDZE	<b>1166</b>
------	-------------	----------	------	-------------



CATEGORY	A	B	C	D
RNP 0.10 DA		1416- <sup>3</sup> / <sub>4</sub>	250 (300- <sup>3</sup> / <sub>4</sub> )	
RNP 0.30 DA		1476-1	310 (300-1)	

**AUTHORIZATION REQUIRED**

NW-1, 25 FEB 2021 to 25 MAR 2021

NW-1, 25 FEB 2021 to 25 MAR 2021