


APP CRS	Rwy ldg	<b>13492</b>
<b>324°</b>	TDZE	<b>1167</b>
	Apt Elev	<b>1189</b>

# RNAV (RNP) Z RWY 32R

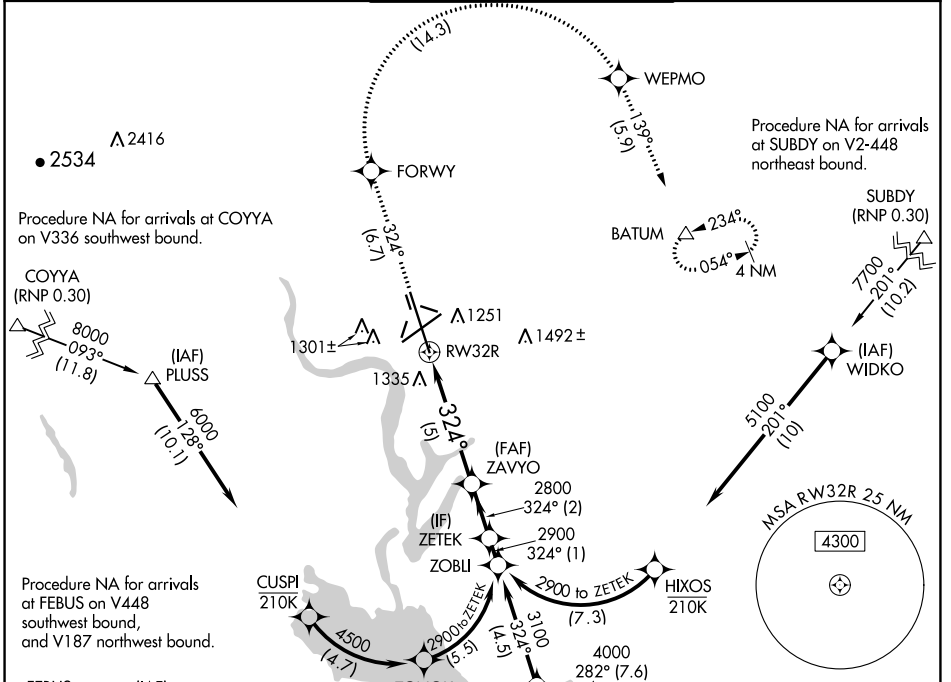
GRANT COUNTY INTL (MWH)

▼ For uncompensated Baro-VNAV systems, procedure NA below -17°C (2°F) or above 46°C (114°F). RF required. GPS required. For inoperative MALSR increase RNP 0.10 visibility all Cats to RVR 4000, increase RNP 0.30 visibility all Cats to RVR 6000.

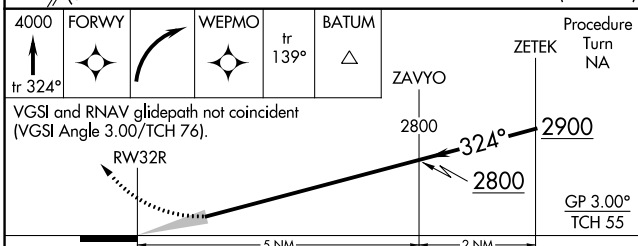
MALSR 

MISSED APPROACH: Climb to 4000 on track 324° to FORWY right turn to WEPMO and track 139° to BATUM and hold.

ATIS <b>119.05</b>	GRANT COUNTY APP CON * <b>126.4 379.95</b>	GRANT COUNTY TOWER * <b>118.25 (CTAF) 0 257.8 (EAST)</b> <b>128.0 257.8 (WEST)</b>	GND CON <b>121.9</b>	UNICOM <b>122.95</b>
-----------------------	---	--	-------------------------	-------------------------

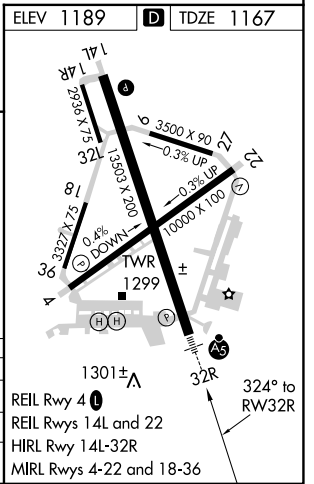


ELEV 1189	TDZE 1167
-----------	-----------



CATEGORY	A	B	C	D
RNP 0.10 DA		1417/24	250 (300-½)	
RNP 0.30 DA		1533/40	366 (400-¾)	

**AUTHORIZATION REQUIRED**



NW-1, 25 FEB 2021 to 25 MAR 2021

NW-1, 25 FEB 2021 to 25 MAR 2021