

APP CRS	Rwy Idg	10000
036°	TDZE	1189
	Apt Elev	1189

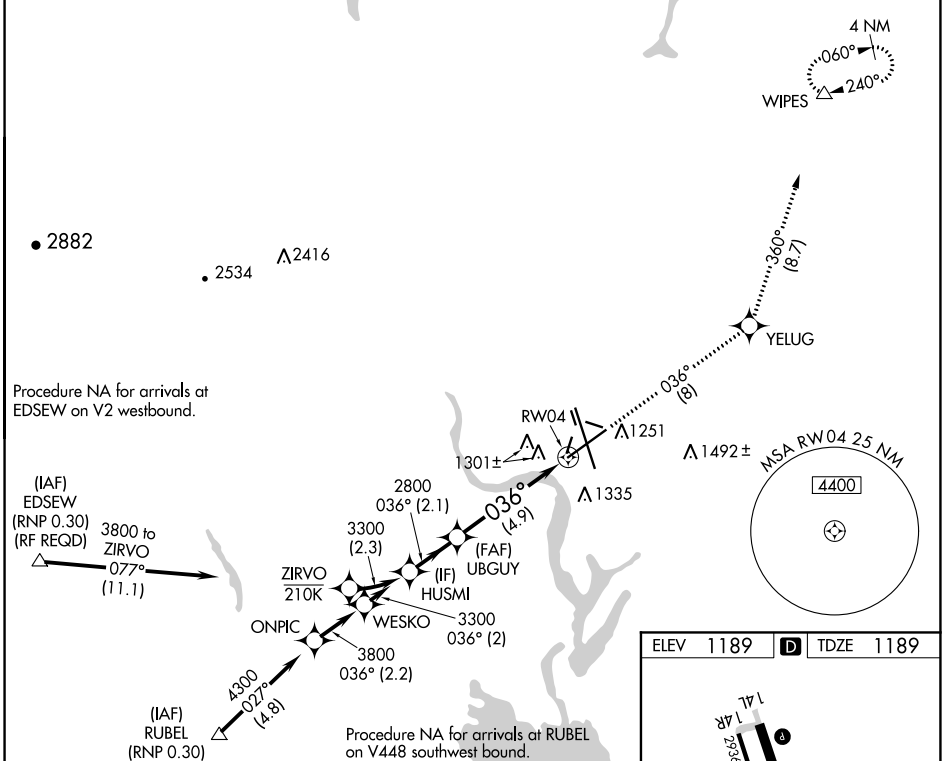
RNAV (RNP) Z RWY 4

GRANT COUNTY INTL (MWH)

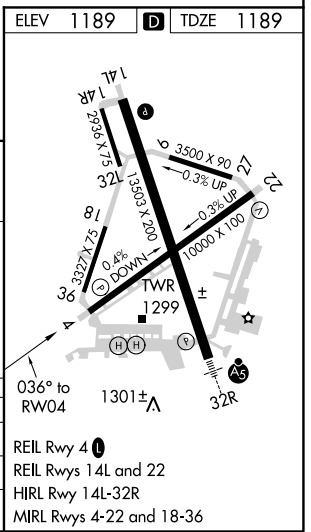
For uncompensated Baro-VNAV systems, procedure NA below -17°C (2°F) or above 46°C (114°F). GPS required.

MISSED APPROACH: Climb to 4000 on track 036° to YELUG and on track 360° to WIPES and hold.

ATIS 119.05	GRANT COUNTY APP CON * 126.4 379.95	GRANT COUNTY TOWER * 118.25 (CTAF) 0 257.8 (EAST) 128.0 257.8 (WEST)	GND CON 121.9	UNICOM 122.95
-----------------------	---	--	-------------------------	-------------------------



Procedure Turn NA	HUSMI	UBGUY	tr 036°	YELUG	tr 360°	WIPES
GP 3.00° TCH 50	3300	2800	2.1 NM	4.9 NM		
CATEGORY	A	B	C	D		
RNP 0.10 DA		1439-3/4	250 (300-3/4)			
RNP 0.30 DA		1498-1	309 (400-1)			



AUTHORIZATION REQUIRED

NW-1, 25 FEB 2021 to 25 MAR 2021

NW-1, 25 FEB 2021 to 25 MAR 2021