

WAAS CH 90509 W14A	APP CRS 144°	Rwy ldg 13503 TDZE 1169 Apt Elev 1189
---------------------------------	------------------------	--

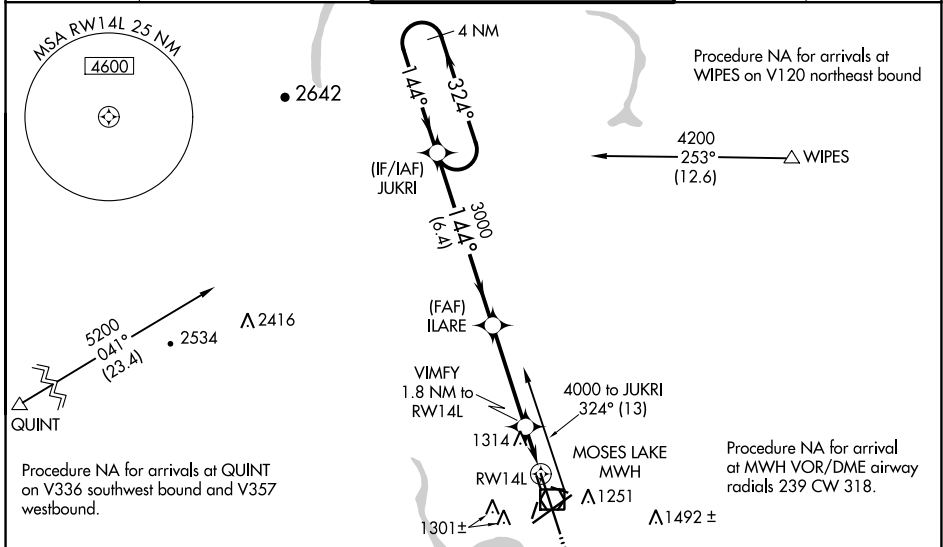
RNAV (GPS) Y RWY 14L

GRANT COUNTY INTL (MWH)

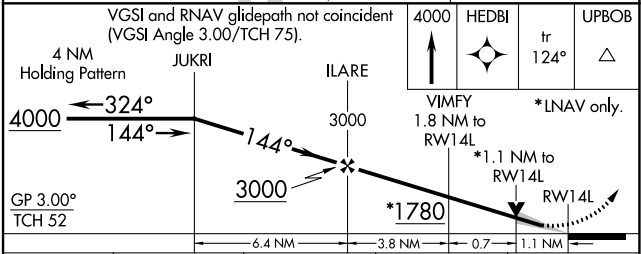
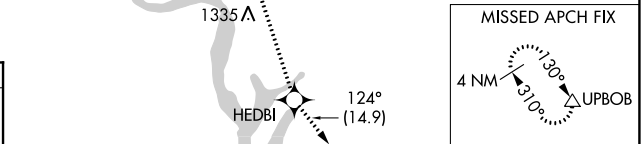
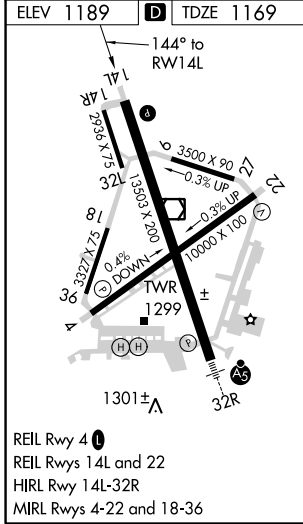
⚠ For uncompensated Baro-VNAV systems, LNAV/VNAV NA below -17°C (2°F) or above 36°C (96°F). DME/DME RNP-0.3 NA. Baro-VNAV and VDP NA when using Ephrata altimeter setting. When local altimeter setting not received, use Ephrata altimeter setting and increase all DA 36 feet and all MDA 40 feet, increase LNAV/VNAV visibility all Cats 1/8 mile and LNAV Cats C and D visibility 1/4 mile.

⚠ MISSED APPROACH: Climb to 4000 direct HEDBI and on track 124° to UPBOB and hold.

ATIS 119.05	GRANT COUNTY APP CON * 126.4 379.95	GRANT COUNTY TOWER * 118.25 (CTAF) 0 257.8 (EAST) 128.0 257.8 (WEST)	GND CON 121.9	UNICOM 122.95
-----------------------	---	--	-------------------------	-------------------------



Procedure NA for arrivals at QUINT on V336 southwest bound and V357 westbound.



CATEGORY	A	B	C	D
LPV DA		1369-3/4	200 (200-3/4)	
LNAV/VNAV DA		1436-7/8	267 (300-7/8)	
LNAV MDA	1580-1	411 (400-1)	1580-1 1/8	411 (400-1 1/8)
CIRCLING	1660-1	471 (500-1)	1660-1 1/2	1740-2 551 (600-2)

NW-1, 25 FEB 2021 TO 25 MAR 2021

NW-1, 25 FEB 2021 TO 25 MAR 2021