

WAAS CH 42809 W04A	APP CRS 036°	Rwy ldg 10000 TDZE 1189 Apt Elev 1189
---------------------------------	------------------------	--

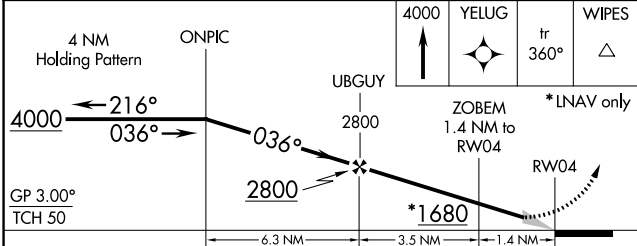
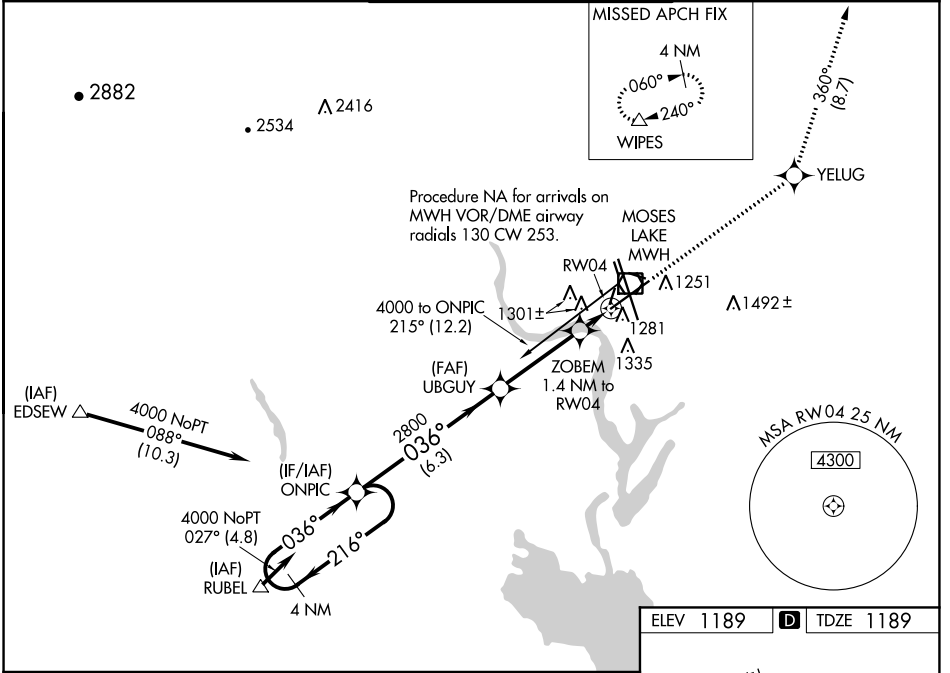
RNAV (GPS) Y RWY 4

GRANT COUNTY INTL (MWH)

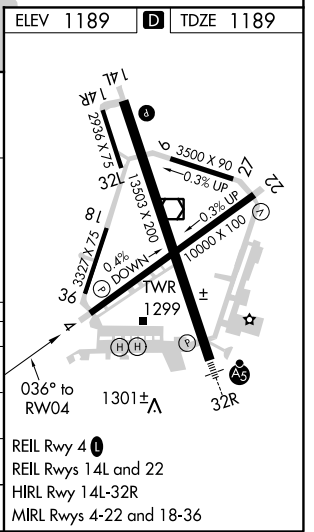
⚠ For uncompensated Baro-VNAV systems, LNAV/VNAV NA below -17°C (2°F) or above 36°C (96°F). DME/DME RNP-0.3 NA. When local altimeter setting not received, use Ephrata altimeter setting and increase all DA 36 feet and increase all MDA 40 feet, increase LNAV/VNAV all Cats visibility, and LNAV Cat C and D visibility 1/8 mile. Baro-VNAV NA when using Ephrata altimeter setting.

MISSED APPROACH: Climb to 4000 direct YELUG and on track 360° to WIPES and hold.

ATIS 119.05	GRANT COUNTY APP CON * 126.4 379.95	GRANT COUNTY TOWER * 118.25 (CTAF) 0 257.8 (EAST) 128.0 257.8 (WEST)	GND CON 121.9	UNICOM 122.95
-----------------------	---	--	-------------------------	-------------------------



CATEGORY	A	B	C	D
LPV DA		1389-3/4	200 (200-3/4)	
LNAV/VNAV DA		1442-3/4	253 (300-3/4)	
LNAV MDA		1540-1	351 (400-1)	
CIRCLING	1660-1	471 (500-1)	1660-1 1/2 471 (500-1 1/2)	1740-2 551 (600-2)



NW-1, 25 FEB 2021 to 25 MAR 2021

NW-1, 25 FEB 2021 to 25 MAR 2021