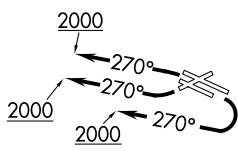
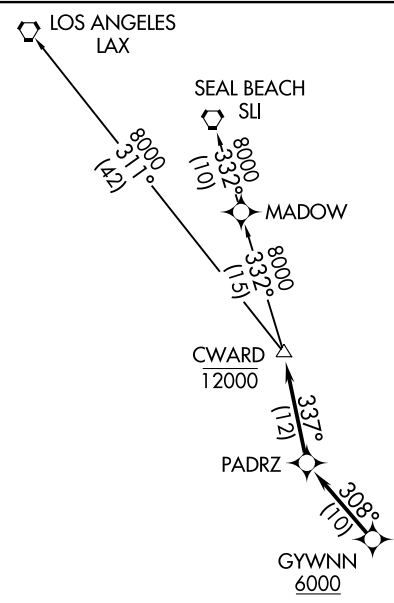


**TOP ALTITUDE:  
AS ASSIGNED BY ATC**

ATIS  
126.9  
MONTGOMERY TOWER\*  
119.2 269.4  
SOCAL DEP CON  
119.6 363.1

- NOTE: RADAR required.
- NOTE: RNAV 1.
- NOTE: GPS or DME/DME/IRU required.
- NOTE: Turbojet and turboprop only.
- NOTE: Tower En Route control only.

TAKEOFF MINIMUMS  
 Rwy 5: NA-ATC.  
 Rwys 10L/R, 23, 28L/R: Standard.



NOTE: Chart not to scale.

**DEPARTURE ROUTE DESCRIPTION**

- TAKEOFF RUNWAYS 10L/R: Climbing right turn heading 270° to 2000, expect vectors to cross GYWNN at or above 6000, then on track 308° to PADRZ, then on track 337° to cross CWARD at or below 12000, thence. . . .
- TAKEOFF RUNWAY 23: Climbing right turn heading 270° to 2000, expect vectors to cross GYWNN at or above 6000, then on track 308° to PADRZ, then on track 337° to cross CWARD at or below 12000, thence. . . .
- TAKEOFF RUNWAYS 28L/R: Climbing left turn heading 270° to 2000, expect vectors to cross GYWNN at or above 6000, then on track 308° to PADRZ, then on track 337° to cross CWARD at or below 12000, thence. . . .

. . . .on transition. Maintain ATC assigned altitude. Expect filed altitude 10 minutes after departure.

- LOS ANGELES TRANSITION (CWARD2.LAX)
- SEAL BEACH TRANSITION (CWARD2.SLI)

SW-3, 25 FEB 2021 to 25 MAR 2021

SW-3, 25 FEB 2021 to 25 MAR 2021