

WAAS CH <b>82730</b> <b>W04A</b>	APP CRS <b>038°</b>	Rwy Idg <b>3200</b> TDZE <b>1076</b> Apt Elev <b>1076</b>
--	------------------------	---

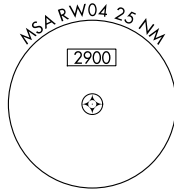
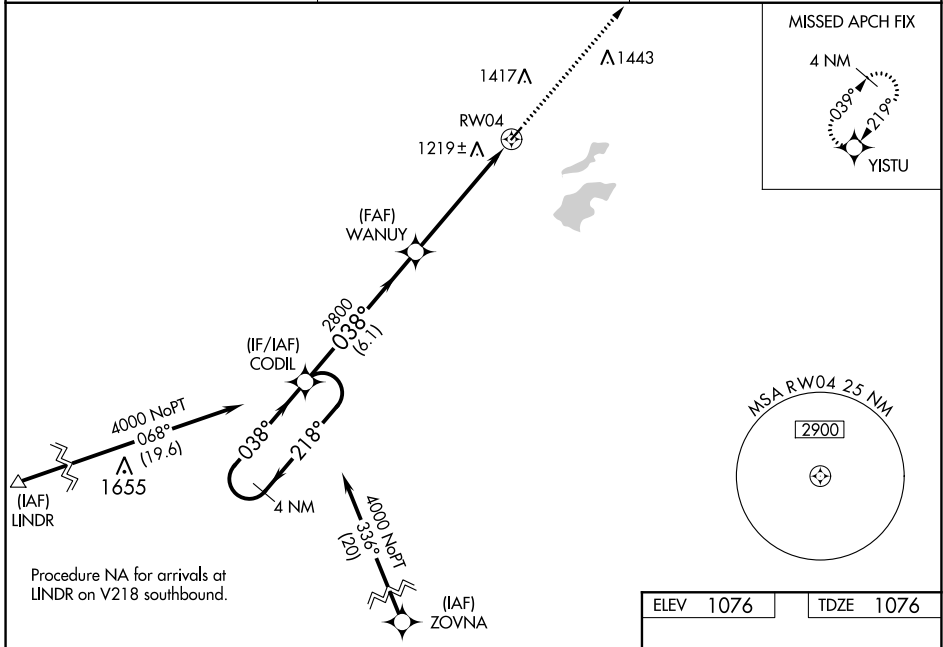
# RNAV (GPS) RWY 4

MOOSE LAKE CARLTON COUNTY (MZH)

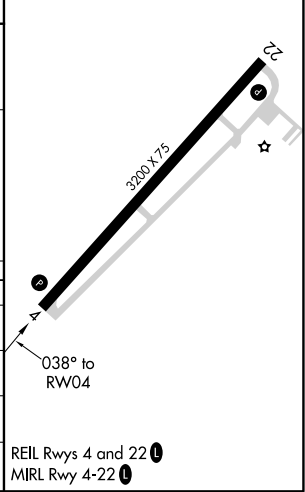
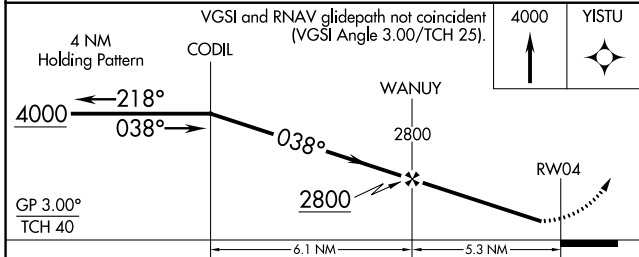
**▽** For uncompensated Baro-VNAV systems, LNAV/VNAV NA below -17°C (2°F) or above 54°C (130°F). Straight-in minimums NA at night. DME/DME RNP-0.3 NA. Visibility reduction by helicopters NA. Baro-VNAV NA when using Cloquet altimeter setting. When local altimeter setting not received, use Cloquet altimeter setting and increase all DA 77 feet and all MDA 80 feet; increase LPV all Cats visibility 1/8 mile and LNAV/VNAV all Cats visibility 3/8 mile.

MISSED APPROACH: Climb to 4000 direct YISTU and hold.

AWOS-3 <b>119.125</b>	DULUTH APP CON <b>125.45 233.7</b>	CTAF <b>122.9</b>
--------------------------	---------------------------------------	----------------------



ELEV 1076	TDZE 1076
-----------	-----------



CATEGORY	A	B	C	D
LPV DA	1326-1	250 (300-1)		NA
LNAV/VNAV DA	1529-1½	453 (500-1½)		NA
LNAV MDA	1560-1	484 (500-1)		NA
CIRCLING	1660-1	584 (600-1)		NA

NC-1, 25 FEB 2021 to 25 MAR 2021

NC-1, 25 FEB 2021 to 25 MAR 2021