

NEW ORLEANS, LOUISIANA

# ILS or LOC/DME RWY 4

NEW ORLEANS NAS JRB  
(ALVIN CALLENDER FLD) (KNBG)

LOC I-NBG <b>109.5</b>	APCH CRS <b>044°</b>	Rwy ldg <b>10,001</b> TDZE <b>-2</b> Arprt Elev <b>2</b>
---------------------------	-------------------------	--

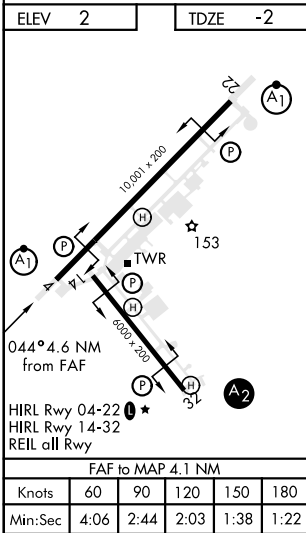
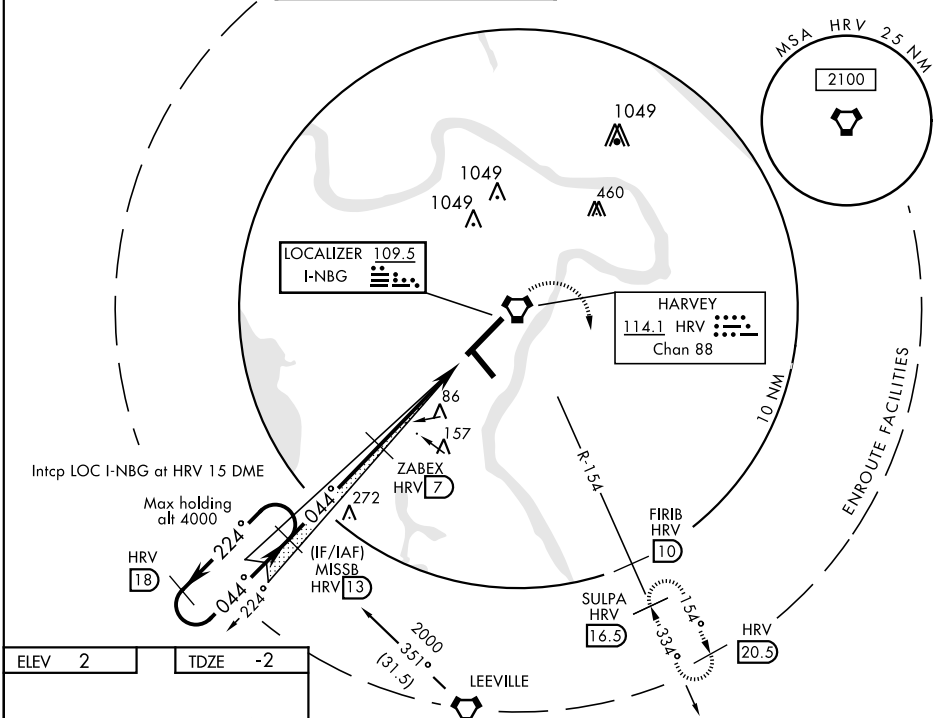
AL-630 [USN]

**▽** \* When ALS inop, increase vis CAT ABCDE to ¾ mile.  
**\*\*** When ALS inop, increase vis CAT AB to 1 mile;  
 CAT CDE to 1 ½ miles.  
**\*\*\*** CAT E circling not authorized NW of Rwy 4-22.

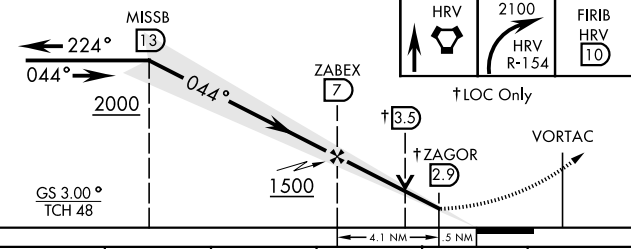


**MISSED APPROACH:** Climb to 2100 direct HRV  
 VORTAC then climbing right turn intercept HRV R-154  
 to SULPA and hold. Cross FIRB at 2000.

ATIS ★ <b>279.55</b>	NEW ORLEANS APP CON <b>123.85 256.9</b>	NAVY NEW ORLEANS TOWER ★ <b>123.8 340.2</b> (CTAF)	GND CON <b>121.6 270.35</b>	CLNC DEL <b>128.35 263.0</b>	ASR/ PAR
-------------------------	--	---	--------------------------------	---------------------------------	-------------



EMERG SAFE ALT 100 NM 3100



CATEGORY	A	B	C	D	E
S-ILS 4 *	198-½		200	(200-½)	
S-LOC 4 **	400-½ 402 (400-½)		400-¾ 402 (400-¾)		
*** CIRCLING	580-1	578 (600-1)	580-1½ 578 (600-1½)	640-2 638 (700-2)	640-2½ 638 (700-2½)

NEW ORLEANS, LOUISIANA

29°50'N-90°02'W

NEW ORLEANS NAS JRB  
(ALVIN CALLENDER FLD)

# ILS or LOC/DME RWY 4

Amdt 2 13SEP18

SC-4, 25 FEB 2021 to 25 MAR 2021

SC-4, 25 FEB 2021 to 25 MAR 2021