

VOR/DME or TACAN RWY 4

VORTAC HRV 114.1 Chan 88	APCH CRS 046°	Rwy Idg TDZE Arprt Elev 10,001 -2 2
--	-------------------------	---

AL-630 [USN]

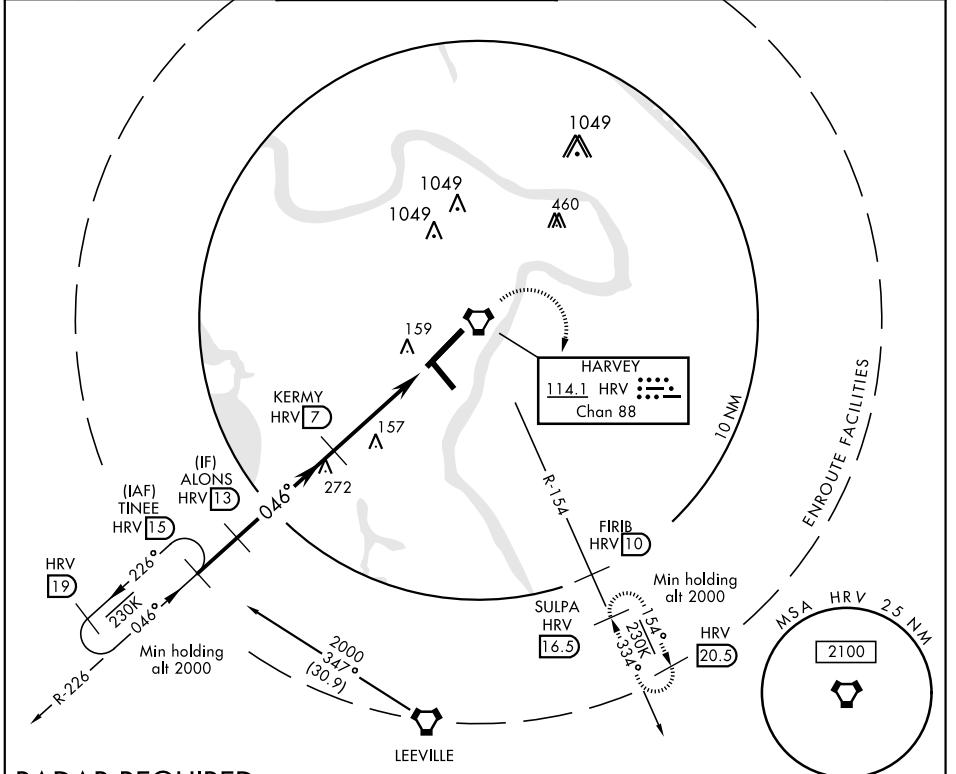
NEW ORLEANS NAS JRB
(ALVIN CALLENDER FLD) (KNBG)

⚠ * When ALS inop, increase vis CAT AB to 1 mile, CAT CD to 1½ miles.

 ALSF-1

 MISSED APPROACH: Climb direct HRV VORTAC, then climbing right turn to 2100, intercept HRV R-154 to SULPA and hold. Cross FIRB (HRV R-154/10) at 2000.

ATIS ★ 279.55	NEW ORLEANS APP CON 123.85 256.9	NAVY NEW ORLEANS TOWER ★ 0 123.8 340.2 (CTAF)	GND CON 121.6 270.35	CLNC DEL 128.35 263.0	ASR/PAR
-------------------------	--	---	--------------------------------	---------------------------------	---------

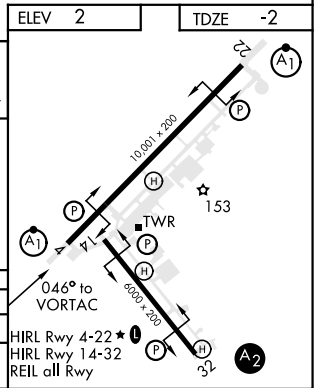
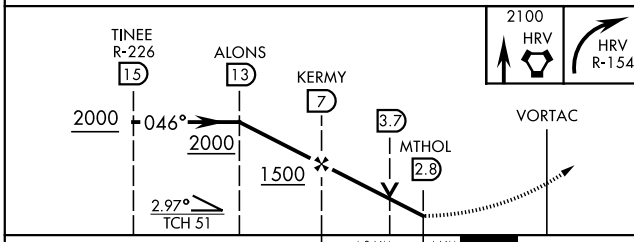


SC-4, 25 FEB 2021 to 25 MAR 2021

SC-4, 25 FEB 2021 to 25 MAR 2021

RADAR REQUIRED

EMERG SAFE ALT 100 NM 3100



CATEGORY	A	B	C	D
S-4 *	480-½	482 (500-½)	480-1	482 (500-1)
C CIRCLING	580-1	578 (600-1)	580-1½ 578 (600-1½)	640-2 638 (700-2)

VOR/DME or TACAN RWY 4