

WAAS Chan <b>60342</b> <b>W24A</b>	APCH CRS <b>242°</b>	Rwy ldg <b>5002</b> TDZE <b>101</b> Arprt Elev <b>101</b>
--	-------------------------	---

AL-223 [USN]

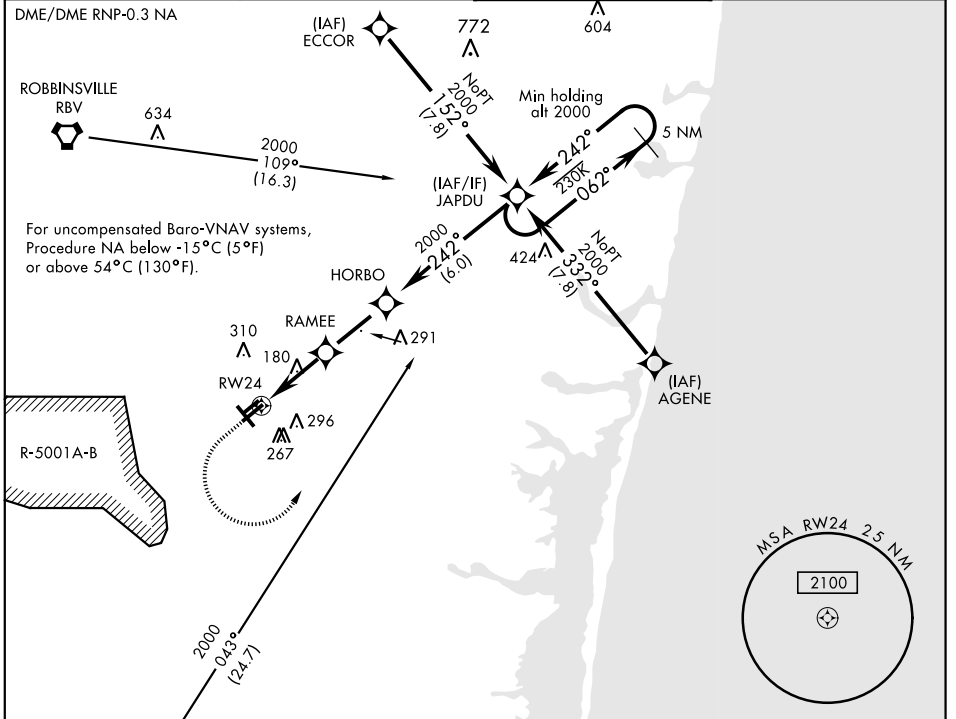
(JOINT BASE MC GUIRE DIX LAKEHURST) (KNEL)

**▼** \* When ALS inop, increase vis to ¼ mile.  
 \*\* When ALS inop, increase CAT ABC vis to 7/8 mile;  
 CAT D vis to 1 mile.  
 \*\*\* When ALS inop, increase vis to 1 mile.

**MALSR**  

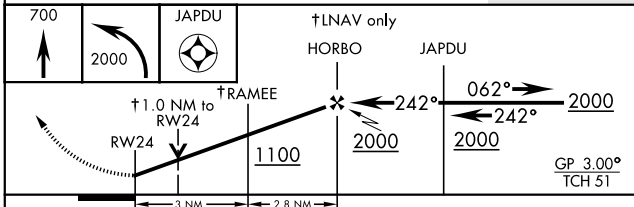

**MISSED APPROACH:** Climb to 700 then climbing left turn to 2000 direct JAPDU and hold.

<b>ATIS ★</b> <b>276.525</b>	<b>MC GUIRE APP CON</b> <b>126.475 363.8</b>	<b>LAKEHURST TOWER ★</b> <b>127.775 360.2</b>	<b>GND CON</b> <b>118.375 307.05</b>
---------------------------------	---	--	---

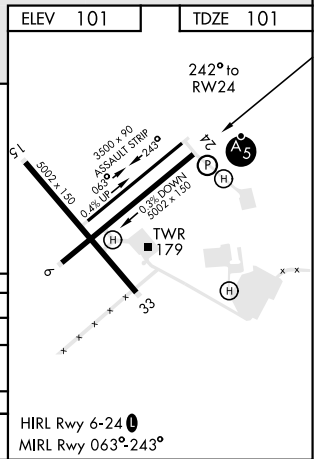


<b>ELEV 101</b>	<b>TDZE 101</b>
-----------------	-----------------

**EMERG SAFE ALT 100 NM 4100**



CATEGORY	A	B	C	D
LPV DA *		301-½	200 (200-½)	
LNAV/VNAV DA **	383-½ 282 (300-½)	403-½ 302 (400-½)	418-½ 317 (400-½)	436-½ 335 (400-½)
LNAV MDA ***	460-½ 640-1	359 (400-½) 720-1	460-5/8 720-1 3/4	359 (400-5/8) 720-2
<b>CIRCLING</b>	539 (600-1)	619 (700-1)	619 (700-1 3/4)	619 (700-2)



NE-2, 25 FEB 2021 to 25 MAR 2021

NE-2, 25 FEB 2021 to 25 MAR 2021