

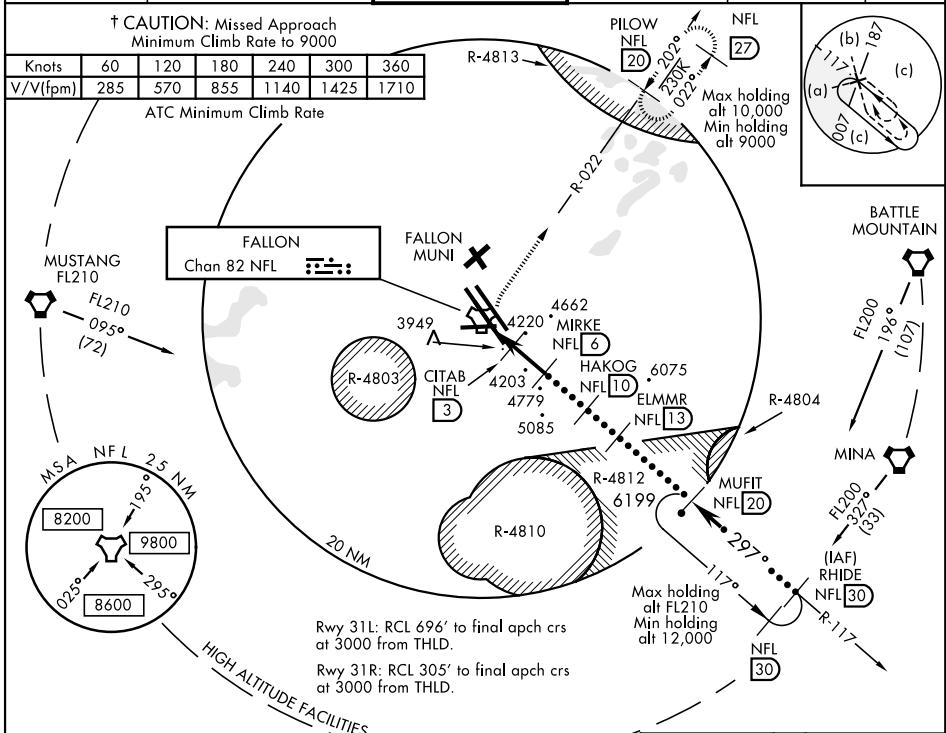
# HI-TACAN RWY 31 L/R

TACAN NFL Chan <b>82</b>	APCH CRS <b>297°</b>	Rwy Idg TDZE Arpt Elev	31L <b>14,001</b> 31L <b>3927</b> <b>3935</b>	31R <b>11,076</b> 31R <b>3928</b>
-----------------------------	-------------------------	------------------------------	---	--------------------------------------

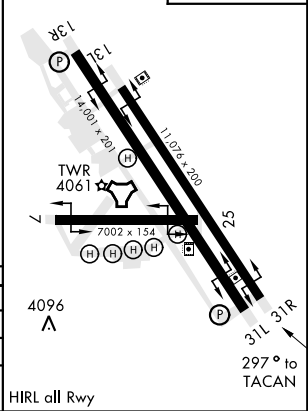
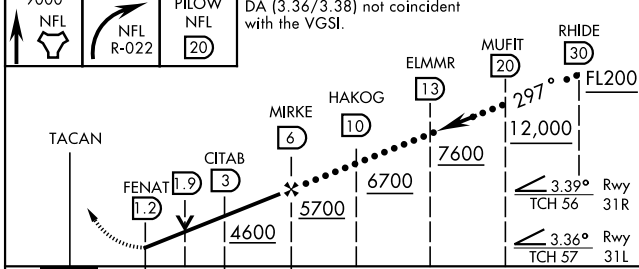
JAL-143 [USN] FALLON NAS (VAN VOORHIS FLD) (KNFL)

† MISSED APPROACH: Climb direct NFL TACAN, then climbing right turn to 9000. Intercept NFL R-022 outbound to PILOW and hold. Missed approach requires minimum climb of 285 ft/NM to 9000.

ATIS ★ <b>370.925</b>	NAVY FALLON APP CON <b>120.85 360.2</b>	NAVY FALLON TOWER★ <b>119.25 340.2</b>	GND CON <b>251.15</b>	CLNC DEL <b>353.55</b>	ASR/PAR
--------------------------	--	---	--------------------------	---------------------------	---------



EMERG SAFE ALT 100 NM 15,600	ELEV 3935	TDZE 31L 3927
		TDZE 31R 3928



CATEGORY	C	D	E
S-31L	4240-1	313	(400-1)
S-31R	4240-1	312	(400-1)
CIRCLING	4700-2¼ 765 (800-2¼)	4920-3 985 (1000-3)	4980-3 1045 (1100-3)

HIRL all Rwy

FALLON, NEVADA 39°25'N-118°42'W FALLON NAS (VAN VOORHIS FLD) (KNFL)

# HI-TACAN RWY 31 L/R

SW-4, 25 FEB 2021 to 25 MAR 2021

SW-4, 25 FEB 2021 to 25 MAR 2021