

FALLON, NEVADA

RNAV (GPS) RWY 13R

APCH CRS 131°	Rwy Idg TDZE Arpt Elev	14,001 3935 3935
-------------------------	------------------------------	---

AL-143 (USN)

FALLON NAS (VAN VOORHIS FLD) (KNFL)

† MISSED APPROACH: Climb to 9800 direct HOROD and hold. Continue climb-in-hold. Max 175 KIAS until 9800. Missed apch requires minimum climb of 270 ft/nm to 9800.

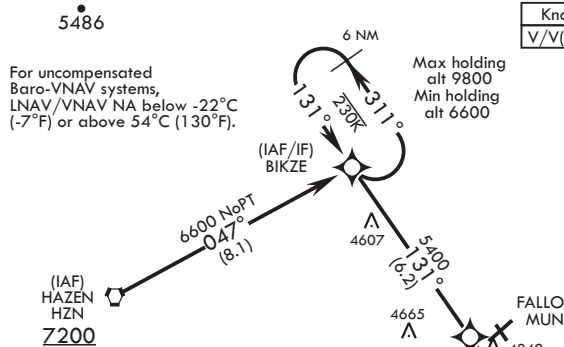
ATIS* 370.925	NAVY FALLON APP CON/DEP CON 120.85 360.2	NAVY FALLON TOWER* 119.25 340.2	GND CON 251.15	CLNC DEL 353.55	ASR/PAR
-------------------------	--	---	--------------------------	---------------------------	---------

DME/DME RNP-0.3 NA

† CAUTION: Missed Approach
Minimum Climb Rate to 5100

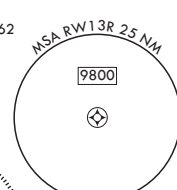
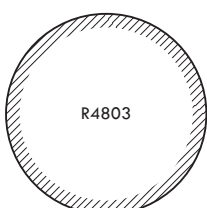
Knots	60	120	180	240	300	360
V/V(fpm)	270	540	810	1080	1350	1620

Controlling Obstacle 4662



NOT FOR CIVIL USE

CAUTION: Fallon Muni
Airport (uncontrolled) 5 NM
NW. Pattern alt 800 ft AGL.



EMERG SAFE ALT 100 NM 15,600

9800 6600	BIKZE 311° 131°	JENGU 5400	FEGAB *4620	RW13R *1 NM to RW13R	9800 HOROD	ELEV 3935	TDZE 3935
GP 3.00° TCH 50							
CATEGORY	A	B	C	D			
LNAV/VNAV DA	4340-1½	405	(500-1½)				
LNAV MDA	4300-1	365	(400-1)				
CIRCLING	4400-1	465 (500-1)	4700-2¼ 765 (800-2¼)	4920-3 985 (1000-3)			

FALLON, NEVADA

39°25'N - 118°42'W

FALLON NAS (VAN VOORHIS FLD) (KNFL)

Amdt 3 03JAN19

RNAV (GPS) RWY 13R

SW-4, 25 FEB 2021 to 25 MAR 2021

SW-4, 25 FEB 2021 to 25 MAR 2021