

FALLON, NEVADA

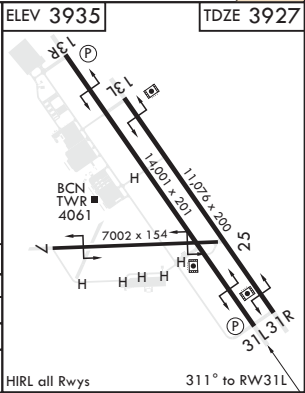
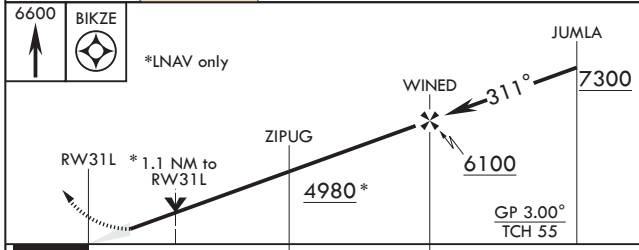
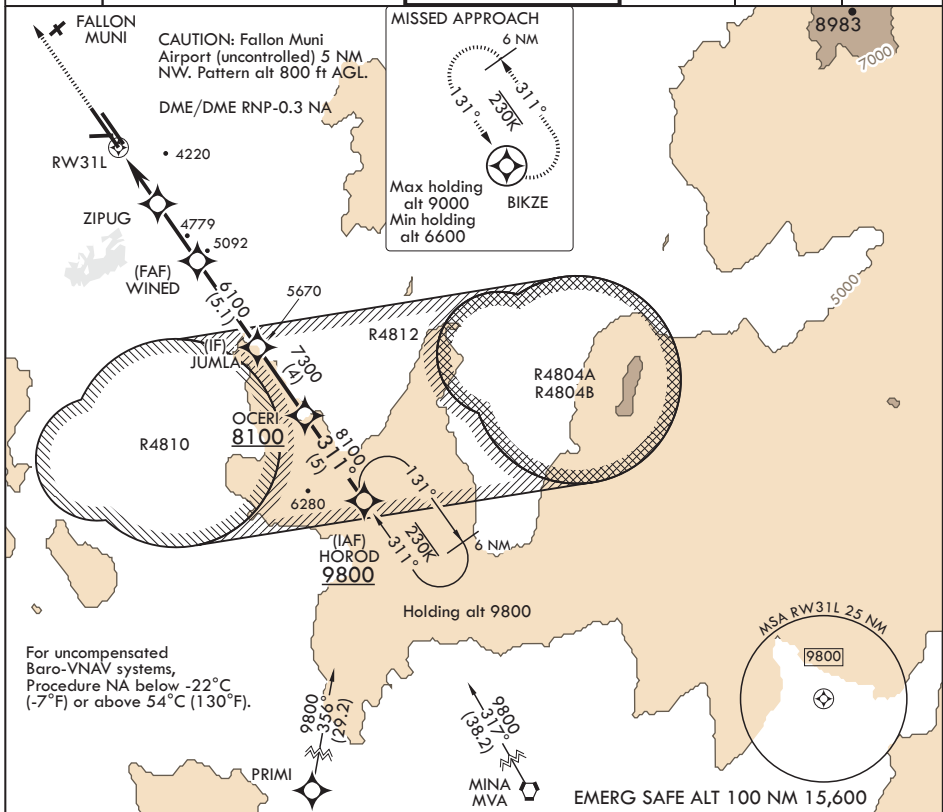
RNAV (GPS) RWY 31L

APCH CRS 311°	Rwy Idg TDZE Arprt Elev	14,001 3927 3935
------------------	-------------------------------	------------------------

AL-143 (USN)

FALLON NAS (VAN VOORHIS FLD) (KNFL)

MISSED APPROACH: Climb to 6600 direct BIKZE and hold.					
ATIS* 370.925	NAVY FALLON APP CON/DEP CON 120.85 360.2	NAVY FALLON TOWER* 119.25 340.2	GND CON 251.15	CLNC DEL 353.55	ASR/PAR



CATEGORY	A	B	C	D
LNAV/VNAV DA	4206-7/8		279	(300-7/8)
LNAV MDA	4380-1	453 (500-1)	4380-1 3/8	453 (500-1 3/8)
CIRCLING	4400-1	465 (500-1)	4700-2 1/4 765 (800-2 1/4)	4920-3 985 (1000-3)

FALLON, NEVADA
Amdt 2 03JAN19

39°25'N - 118°42'W

FALLON NAS (VAN VOORHIS FLD) (KNFL)

RNAV (GPS) RWY 31L

SW-4, 25 FEB 2021 to 25 MAR 2021

SW-4, 25 FEB 2021 to 25 MAR 2021