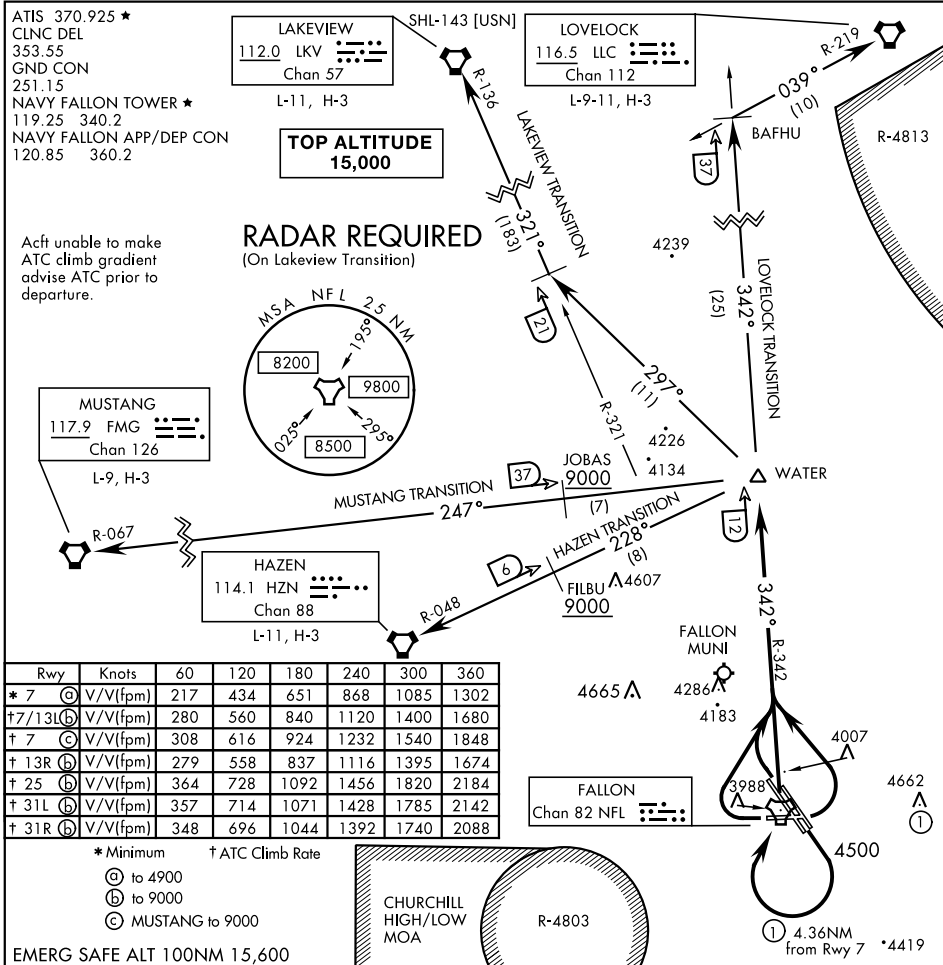


WATER-SEVEN DEPARTURE (WATER7•WATER)

FALLON, NEVADA



Rwy	Knots	60	120	180	240	300	360
* 7	(A) V/V(fpm)	217	434	651	868	1085	1302
† 7/13L/R	(B) V/V(fpm)	280	560	840	1120	1400	1680
† 7	(C) V/V(fpm)	308	616	924	1232	1540	1848
† 13R	(B) V/V(fpm)	279	558	837	1116	1395	1674
† 25	(B) V/V(fpm)	364	728	1092	1456	1820	2184
† 31L	(B) V/V(fpm)	357	714	1071	1428	1785	2142
† 31R	(B) V/V(fpm)	348	696	1044	1392	1740	2088

* Minimum † ATC Climb Rate
 (A) to 4900
 (B) to 9000
 (C) MUSTANG to 9000

EMERG SAFE ALT 100NM 15,600

DEPARTURE ROUTE DESCRIPTION

TAKE-OFF RWY 7: Climbing left turn to intercept NFL TACAN R-342 to WATER. (Right turn-out not authorized). Do not exceed 250 KIAS until WATER.

TAKE-OFF RWY 13L/R: Climb to 4500, then climbing right turn to NFL TACAN, intercept NFL R-342 to WATER. Do not exceed 250 KIAS until WATER.

TAKE-OFF RWY 25: Turn right intercept NFL TACAN R-342 to WATER.

TAKE-OFF RWY 31L/R: Climbing right turn to intercept NFL TACAN R-342 to WATER. Do not exceed 250 KIAS until WATER.

(Continued on next page)

WATER-SEVEN DEPARTURE (WATER7•WATER)

FALLON, NEVADA

SW-4, 25 FEB 2021 to 25 MAR 2021

SW-4, 25 FEB 2021 to 25 MAR 2021