

# RNAV (GPS) RWY 18

AL-98 [USN]

CORPUS CHRISTI NAS (TRUAX FLD) (KNGP)

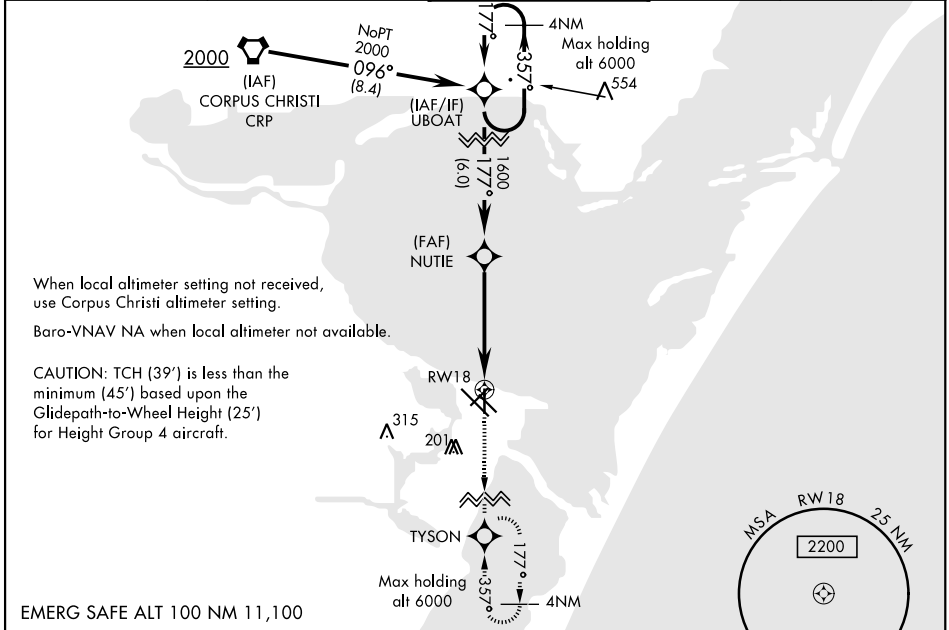
APCH CRS	Rwy Idg	5002
177°	TDZE	19
	Arprt Elev	19

RNP APCH - DME/DME RNP-0.3 NA.

▼ For uncompensated Baro-VNAV systems, LNAV/VNAV NA below -15° C (5° F) or above 54° C (129° F).

MISSED APPROACH: Climb to 2000 direct TYSON and hold.

ATIS ★ <b>127.9 290.9</b>	CORPUS CHRISTI APP CON <b>128.675 343.75</b>	NAVY CORPUS TOWER ★ <b>134.85 340.2</b>	GND CON <b>118.7 257.85</b>	CLNC DEL <b>314.3</b>	ASR/ PAR
------------------------------	---	--	--------------------------------	--------------------------	-------------

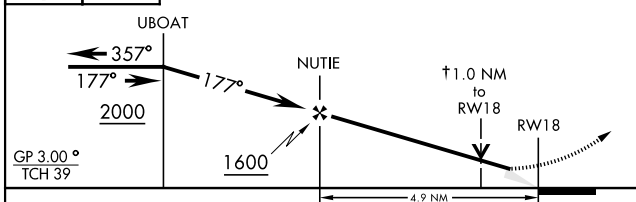


When local altimeter setting not received, use Corpus Christi altimeter setting.  
Baro-VNAV NA when local altimeter not available.

CAUTION: TCH (39') is less than the minimum (45') based upon the Glideslope-to-Wheel Height (25') for Height Group 4 aircraft.

EMERG SAFE ALT 100 NM 11,100

2000	TYSON	† LNAV only VDP NA when using Corpus Christi altimeter setting.
↑	◆	



CATEGORY	A	B	C	D
LNAV/VNAV DA	269-¾	250	(300-¾)	276-¾ (300-¾)
LNAV MDA	380-1		361	(400-1)
<b>C</b> CIRCLING	480-1	461 (500-1)	540-1½ 521 (600-1½)	620-2 601 (700-2)
CORPUS CHRISTI ALTIMETER SETTING				
LNAV MDA	400-1	381 (400-1)	400-1½	381 (400-1½)
<b>C</b> CIRCLING	500-1 481 (500-1)	520-1 501 (600-1)	580-1½ 561 (600-1½)	660-2 641 (700-2)

ELEV 19	TDZE 19
177° to RWY 18	

HIRL Rwy 4-22, 13R-31L  
HIRL Rwy 13L-31R, 18-36  
REIL Rwy 4-22, 13L-31R, 18-36, 31L

# RNAV (GPS) RWY 18

SC-3, 25 FEB 2021 to 25 MAR 2021

SC-3, 25 FEB 2021 to 25 MAR 2021