

CORPUS CHRISTI, TEXAS

RNAV (GPS) RWY 22

AL-98 [USN] CORPUS CHRISTI NAS (TRUAX FLD) (KNGP)

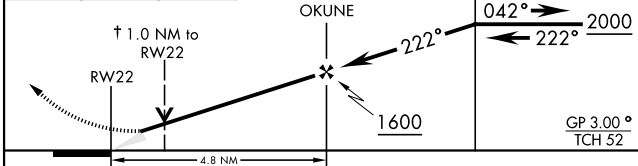
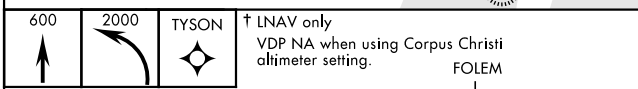
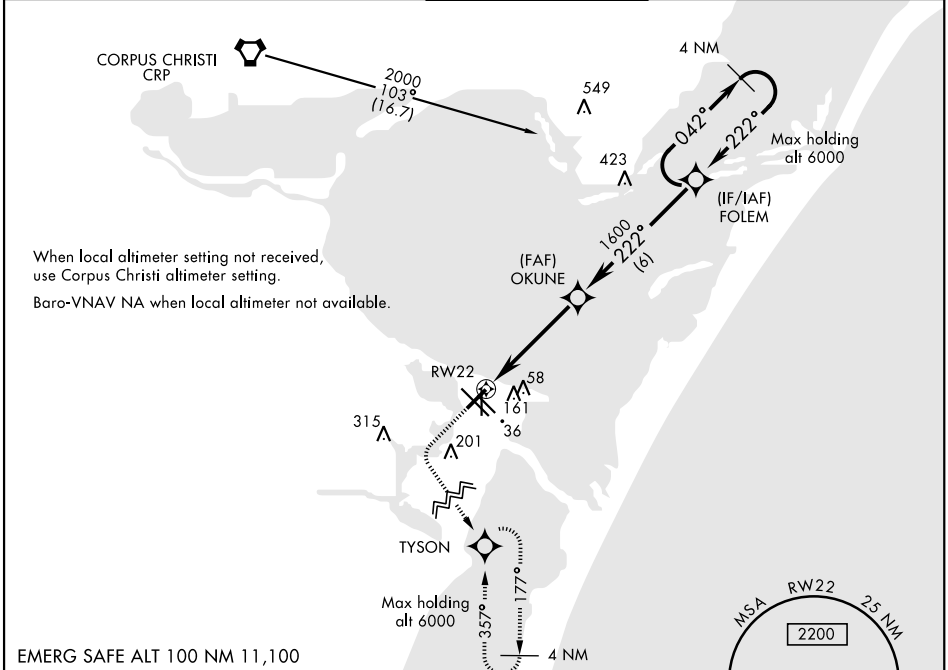
APCH CRS	Rwy Idg	5001
222°	TDZE	15
	Arprt Elev	19

RNP APCH - DME/DME RNP-0.3 NA.

For uncompensated Baro-VNAV systems, LNAV/VNAV NA below -15° C (5° F) or above 54° C (129° F).

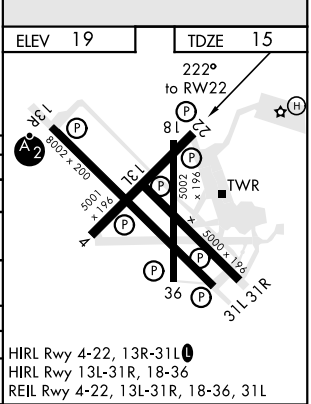
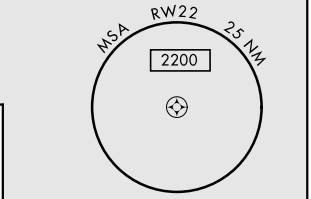
MISSED APPROACH: Climb to 600, then climbing left turn to 2000 direct TYSON and hold.

ATIS ★ 127.9 290.9	CORPUS CHRISTI APP CON 128.675 343.75	NAVY CORPUS TOWER ★ 134.85 340.2	GND CON 118.7 257.85	CLNC DEL 314.3	ASR/ PAR
------------------------------	---	--	--------------------------------	--------------------------	-------------



CATEGORY	A	B	C	D
LNAV MDA	380-1		365	(400-1)
LNAV/VNAV DA	290-7/8 275 (300-7/8)	301-7/8 286 (300-7/8)	309-7/8 294 (300-7/8)	320-7/8 305 (400-7/8)
CIRCLING	480-1	461 (500-1)	540-1½ 521 (600-1½)	620-2 601 (700-2)

CORPUS CHRISTI ALTIMETER SETTING				
LNAV MDA	400-1	385 (400-1)	400-1½	385 (400-1½)
CIRCLING	500-1 481 (500-1)	520-1 501 (600-1)	580-1½ 561 (600-1½)	660-2 641 (700-2)



CORPUS CHRISTI, TEXAS
Amdt 1 16JUL20

27°42'N-97°17'W

CORPUS CHRISTI NAS (TRUAX FLD) (KNGP)

RNAV (GPS) RWY 22

SC-3, 25 FEB 2021 to 25 MAR 2021

SC-3, 25 FEB 2021 to 25 MAR 2021