

CORPUS CHRISTI, TEXAS

# RNAV (GPS) RWY 31L

CORPUS CHRISTI NAS (TRUAX FLD) (KNGP)

AL-98 [USN]

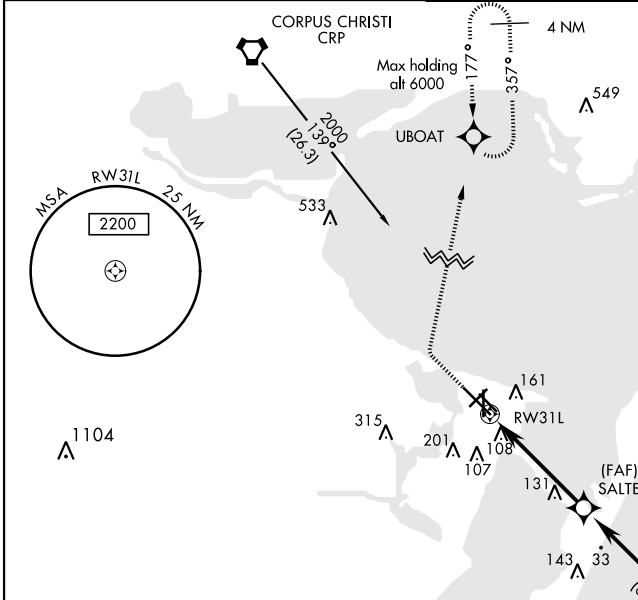
APCH CRS	Rwy Idg	8002
312°	TDZE	18
	Arprt Elev	19

RNP APCH - DME/DME RNP-0.3 NA.

MISSED APPROACH: Climb to 600, then climbing right turn to 2000 direct UBOAT and hold.

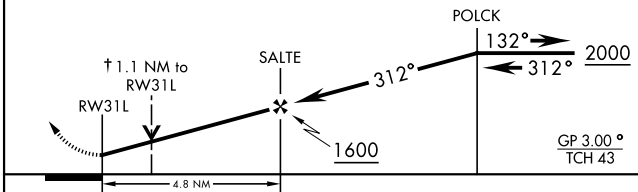
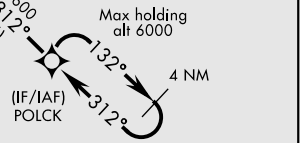
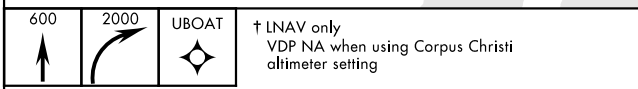
▼ For uncompensated Baro-VNAV systems, LNAV/VNAV NA below -15°C (5°F) or above 54°C (129°F).

ATIS ★ <b>127.9 290.9</b>	CORPUS CHRISTI APP CON <b>128.675 343.75</b>	NAVY CORPUS TOWER ★ <b>134.85 340.2</b>	GND CON <b>118.7 257.85</b>	CLNC DEL <b>314.3</b>	ASR/ PAR
------------------------------	---	--	--------------------------------	--------------------------	-------------



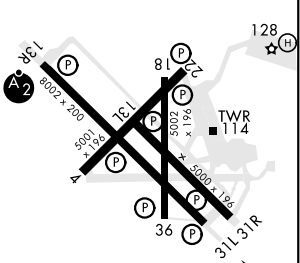
When local altimeter setting not received, use Corpus Christi altimeter setting. Baro-VNAV NA when local altimeter not available. Northbound arrivals on V70-407 and V13-20-163 require turn in holding at CRP VORTAC (See L-20), or RADAR vectors. Holding at CRP NA for TACAN users.

EMERG SAFE ALT 100 NM 11,100



CATEGORY	A	B	C	D
LNAV/VNAV DA	413-1½		395	(400-1½)
LNAV MDA	420-1	402 (500-1)	420-1½	402 (500-1½)
<b>C</b> CIRCLING	480-1	461 (500-1)	540-1½	620-2
			521 (600-1½)	601 (700-2)
CORPUS CHRISTI ALTIMETER SETTING				
LNAV MDA	460-1	442 (500-1)	460-1½	442 (500-1½)
<b>C</b> CIRCLING	500-1	520-1	580-1½	660-2
	481 (500-1)	501 (600-1)	561 (600-1½)	641 (700-2)

ELEV 19	TDZE 18
---------	---------



HIRL Rwy 4-22, 13R-31L 312° to RWY 31L  
 HIRL Rwy 13L-31R, 18-36  
 REIL Rwy 4-22, 13L-31R, 18-36, 31L

CORPUS CHRISTI, TEXAS  
 Amdt 1 16JUL20

27°42'N-97°17'W

CORPUS CHRISTI NAS (TRUAX FLD) (KNGP)

# RNAV (GPS) RWY 31L

SC-3, 25 FEB 2021 to 25 MAR 2021

SC-3, 25 FEB 2021 to 25 MAR 2021