

CORPUS CHRISTI, TEXAS

# RNAV (GPS) RWY 31R

CORPUS CHRISTI NAS (TRUAX FLD) (KNGP)

AL-98 [USN]

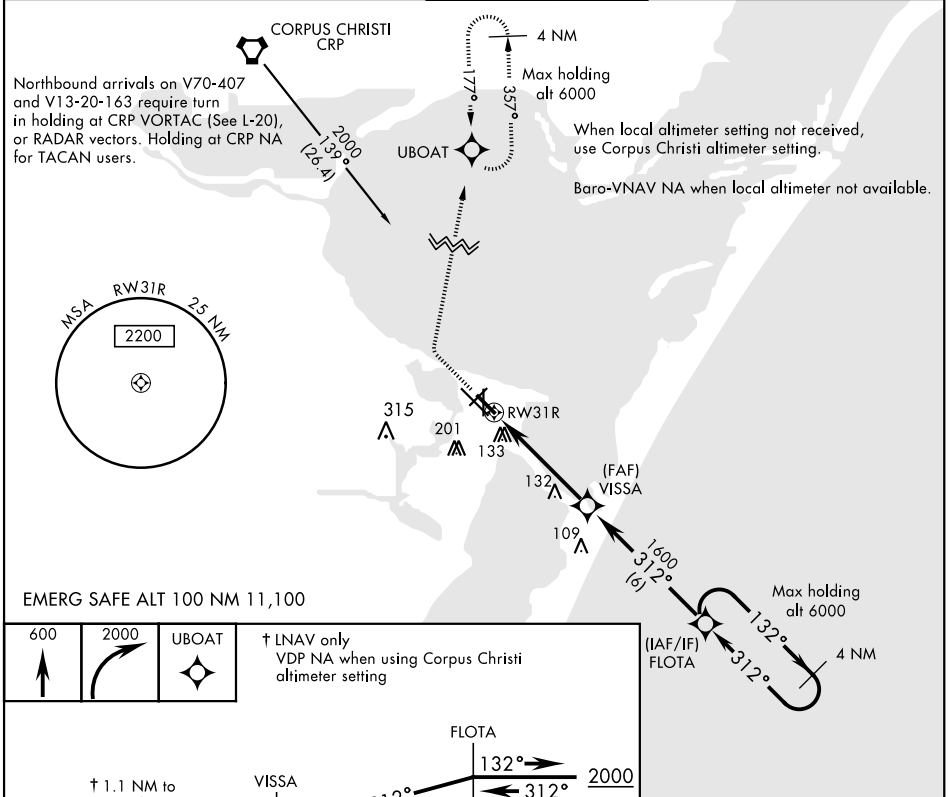
APCH CRS	Rwy Idg	5000
312°	TDZE	19
	Arprt Elev	19

RNP APCH - DME/DME RNP-0.3 NA.

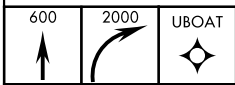
MISSED APPROACH: Climb to 600, then climbing right turn to 2000 direct UBOAT and hold.

For uncompensated Baro-VNAV systems, LNAV/VNAV NA below -15°C (5° F) or above 54°C (129° F).

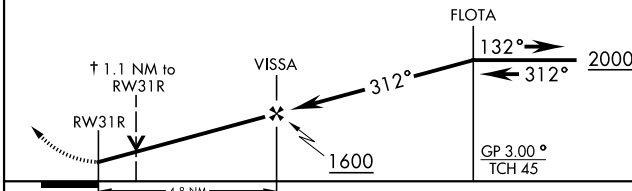
ATIS ★ <b>127.9 290.9</b>	CORPUS CHRISTI APP CON <b>128.675 343.75</b>	NAVY CORPUS TOWER ★ <b>134.85 340.2</b>	GND CON <b>118.7 257.85</b>	CLNC DEL <b>314.3</b>	ASR/ PAR
------------------------------	---	--	--------------------------------	--------------------------	-------------



EMERG SAFE ALT 100 NM 11,100

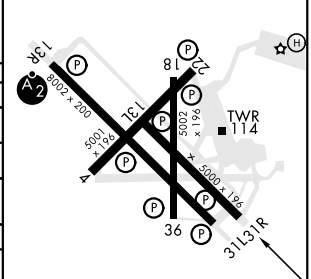


† LNAV only VDP NA when using Corpus Christi altimeter setting



CATEGORY	A	B	C	D
LNAV/VNAV DA	412-1½		393	(400-1½)
LNAV MDA	420-1	401 (500-1)	420-1½	401 (500-1½)
<b>C</b> CIRCLING	480-1	461 (500-1)	540-1½	620-2
			521 (600-1½)	601 (700-2)
CORPUS CHRISTI ALTIMETER SETTING				
LNAV MDA	460-1	441 (500-1)	460-1½	441 (500-1½)
<b>C</b> CIRCLING	500-1	520-1	580-1½	660-2
	481 (500-1)	501 (600-1)	561 (600-1½)	641 (700-2)

ELEV 19	TDZE 19
---------	---------



CORPUS CHRISTI, TEXAS  
Amdt 1 16JUL20

27°42'N-97°17'W

CORPUS CHRISTI NAS (TRUAX FLD) (KNGP)

# RNAV (GPS) RWY 31R

SC-3, 25 FEB 2021 to 25 MAR 2021

SC-3, 25 FEB 2021 to 25 MAR 2021