

CORPUS CHRISTI, TEXAS

RNAV (GPS) RWY 4

APCH CRS	Rwy ldg	5001
042°	TDZE	17
	Arpt Elev	19

AL-98 [USN]

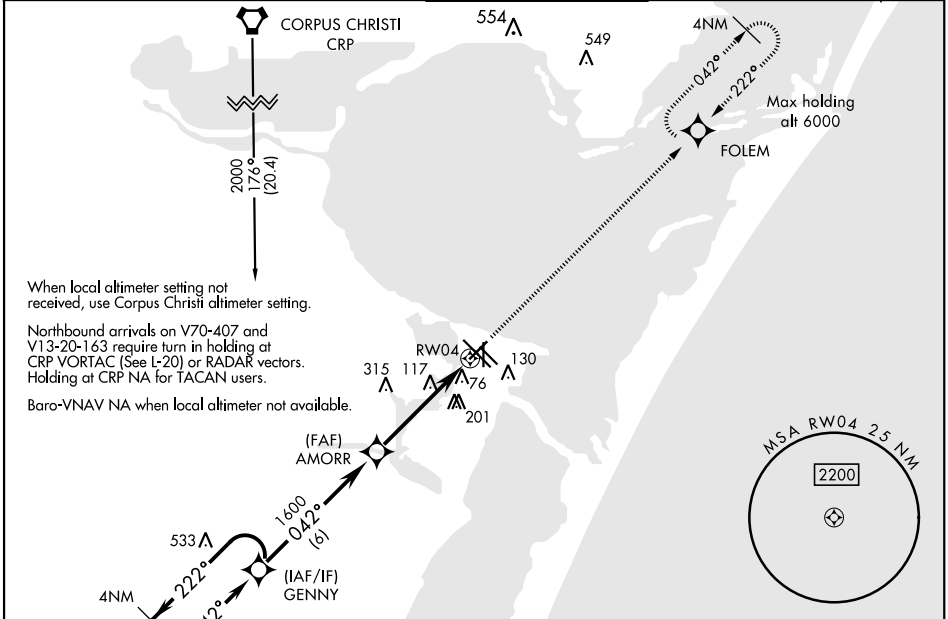
CORPUS CHRISTI NAS (TRUAX FLD) (KNGP)

RNP APCH - DME/DME RNP 0.3 NA.

▼ For uncompensated Baro-VNAV systems, LNAV/VNAV NA below -15°C (5°F) or above 42°C (108°F)

MISSED APPROACH: Climb to 2000 direct FOLEM and hold.

ATIS ★ 127.9 290.9	CORPUS CHRISTI APP CON 128.675 343.75	NAVY CORPUS TOWER ★ 134.85 340.2	GND CON 118.7 257.85	CLNC DEL 314.3	ASR/ PAR
------------------------------	---	--	--------------------------------	--------------------------	-------------

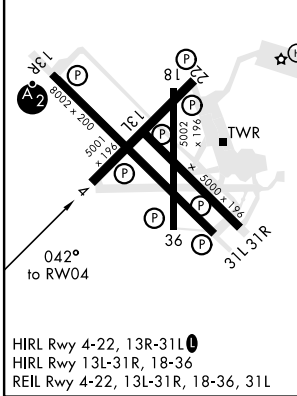


SC-3, 25 FEB 2021 to 25 MAR 2021

SC-3, 25 FEB 2021 to 25 MAR 2021

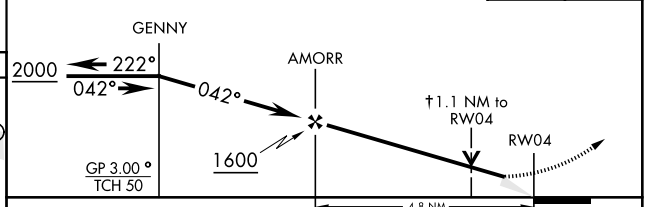
EMERG SAFE ALT 100 NM 11,100

ELEV 19	TDZE 17
---------	---------



HIRL Rwy 4-22, 13R-31L
HIRL Rwy 13L-31R, 18-36
REIL Rwy 4-22, 13L-31R, 18-36, 31L

† LNAV only
VDP NA when using Corpus Christi altimeter setting.



CATEGORY	A	B	C	D
LNAV/VNAV DA	268- ³ / ₄		251 (300- ³ / ₄)	
LNAV MDA	420-1	403 (500-1)	420-1 ¹ / ₈	403 (500-1 ¹ / ₈)
C CIRCLING	480-1	461 (500-1)	540-1 ¹ / ₂ 521 (600-1 ¹ / ₂)	620-2 601 (700-2)
CORPUS CHRISTI ALTIMETER SETTING				
LNAV MDA	440-1	423 (500-1)	440-1 ¹ / ₄	423 (500-1 ¹ / ₄)
C CIRCLING	500-1 481 (500-1)	520-1 501 (600-1)	580-1 ¹ / ₂ 561 (600-1 ¹ / ₂)	660-2 641 (700-2)

CORPUS CHRISTI, TEXAS
Amdt 1 16JUL20

27°42'N-97°17'W

CORPUS CHRISTI NAS (TRUAX FLD) (KNGP)

RNAV (GPS) RWY 4