

TACAN Z RWY 13R

TACAN	NGP	APCH CRS	Rwy Idg	8002
Chan 87		147°	TDZE	13
			Arpt Elev	19

AL-98 [USN]

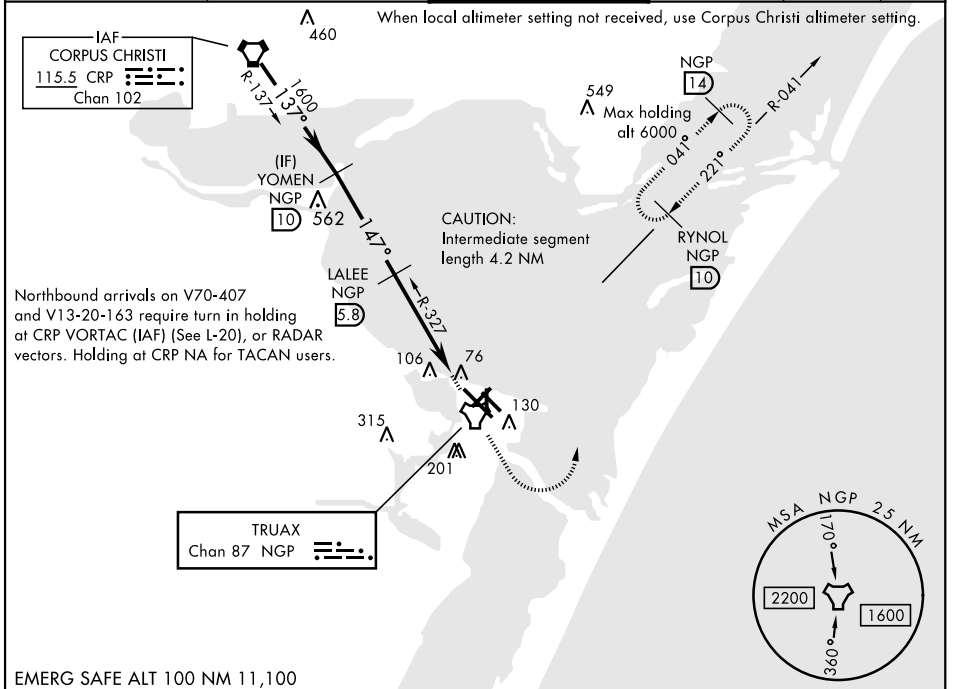
CORPUS CHRISTI NAS (TRUAX FLD) (KNGP)

▽ * When ALS inop, increase CAT AB vis to 1 mile, CAT CD vis to 1½ miles.



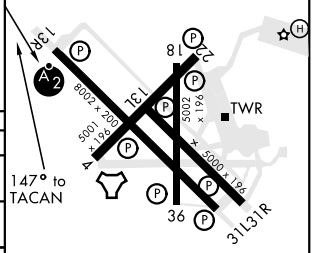
MISSED APPROACH: Climb to 1600 direct NGP TACAN and turn left to intercept R-041 to RYNOL and hold.

ATIS ★ 127.9 290.9	CORPUS CHRISTI APP CON 128.675 343.75	NAVY CORPUS TOWER ★ 134.85 340.2	GND CON 118.7 257.85	CLNC DEL 314.3	ASR/ PAR
------------------------------	---	--	--------------------------------	--------------------------	-------------



EMERG SAFE ALT 100 NM 11,100

YOMEN NGP R-327 10	LALEE NGP 5.8	↑ VDP NA when using Corpus Christi altimeter	1600	NGP	NGP R-041	ELEV 19	TDZE 13
1600	1600	1600					
137°	147°		2.99° TCH 47				
		4.4 NM					
CATEGORY	A	B	C	D			
S-13R *	400-¾	387 (400-¾)	400-7/8	387 (400-7/8)			
CIRCLING	480-1	461 (500-1)	540-1½ 521 (600-1½)	620-2 601 (700-2)			
CORPUS CHRISTI ALTIMETER SETTING							
S-13R *	420-¾	407 (500-¾)	420-1	407 (500-1)			
CIRCLING	500-1 481 (500-1)	520-1 501 (600-1)	580-1½ 561 (600-1½)	660-2 641 (700-2)			
						HIRL Rwy 4-22, 13R-31L	
						HIRL Rwy 13L-31R, 18-36	
						REIL Rwy 4-22, 13L-31R, 18-36, 31L	



TACAN Z RWY 13R

SC-3, 25 FEB 2021 to 25 MAR 2021

SC-3, 25 FEB 2021 to 25 MAR 2021