

# HI-TACAN RWY 28

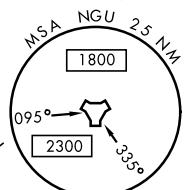
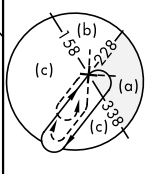
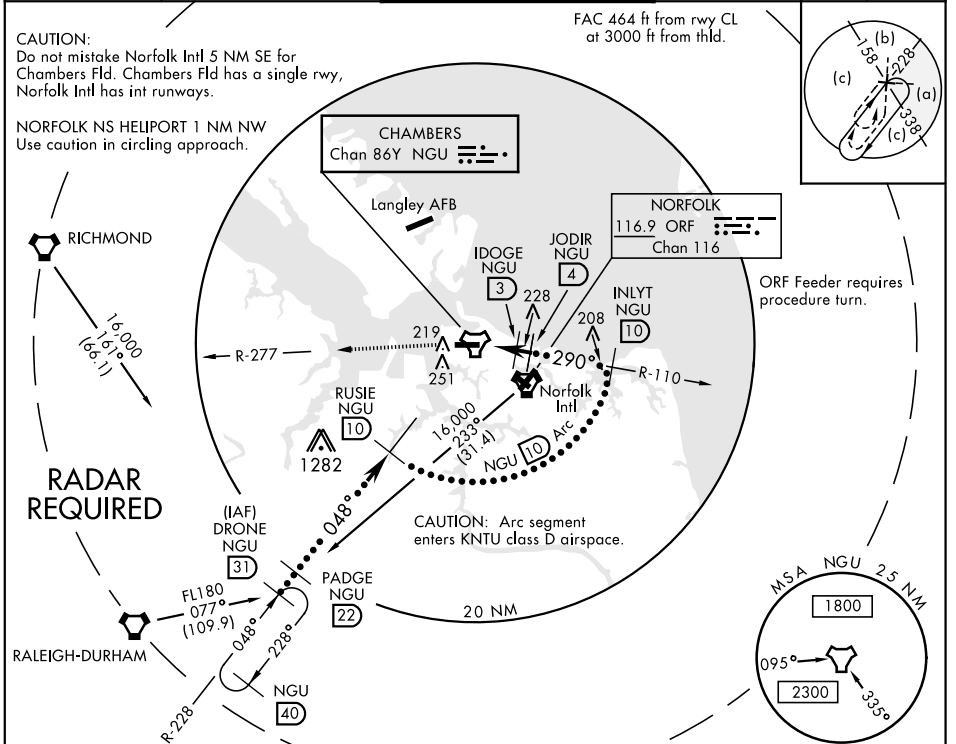
TACAN NGU Chan <b>86Y</b>	APCH CRS <b>290°</b>	Rwy ldg <b>7375</b> TDZE <b>14</b> Arprt Elev <b>15</b>	JAL-290 [USN]	NORFOLK NS (CHAMBERS FIELD) (KNGU)
------------------------------	-------------------------	---	---------------	------------------------------------

▼ \* When ALS inop, increase CAT CDE vis to 1 3/8 miles.  
 \*\* Circling not authorized S of Rwy 10-28.

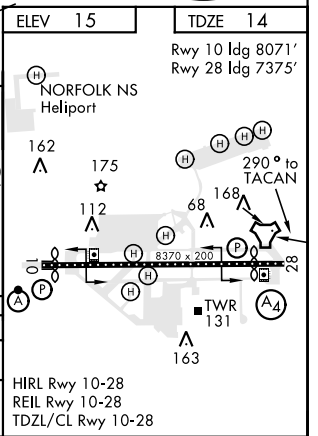
SSALS (A4)

MISSED APPROACH: Climb to 2300 on NGU TACAN R-277 then as directed by ATC.

ATIS <b>118.425 342.0</b>	NORFOLK APP CON <b>118.9 353.7</b>	CHAMBERS TOWER <b>124.3 379.15</b>	GND CON <b>121.8 370.85</b>	ASR/PAR
------------------------------	---------------------------------------	---------------------------------------	--------------------------------	---------



ELEV 15	TDZE 14		
Rwy 10 ldg 8071' Rwy 28 ldg 7375'			
CATEGORY	C	D	E
S-28 *	460-1	446 (500-1)	
CIRCLING **	560-1 1/2 545 (600-1 1/2)	580-2 565 (600-2)	700-2 1/2 685 (700-2 1/2)



NE-3, 25 FEB 2021 to 25 MAR 2021

NE-3, 25 FEB 2021 to 25 MAR 2021