

# ILS or LOC/DME RWY 10

LOC I-NGU <b>108.95</b>	APCH CRS <b>100°</b>	Rwy ldg 8071 TDZE 14 Arprt Elev 15
----------------------------	-------------------------	---

AL-290 [USN]

NORFOLK NS (CHAMBERS FIELD) (KNGU)

▼ \* When ALS inop, increase vis to ¾ mile.  
\*\* When ALS inop, increase CAT AB vis to 1 mile, CAT CDE vis to 1 ½ miles.



MISSED APPROACH: Climbing left turn to 2100 via NGU TACAN R-053 to RUVNE and hold.

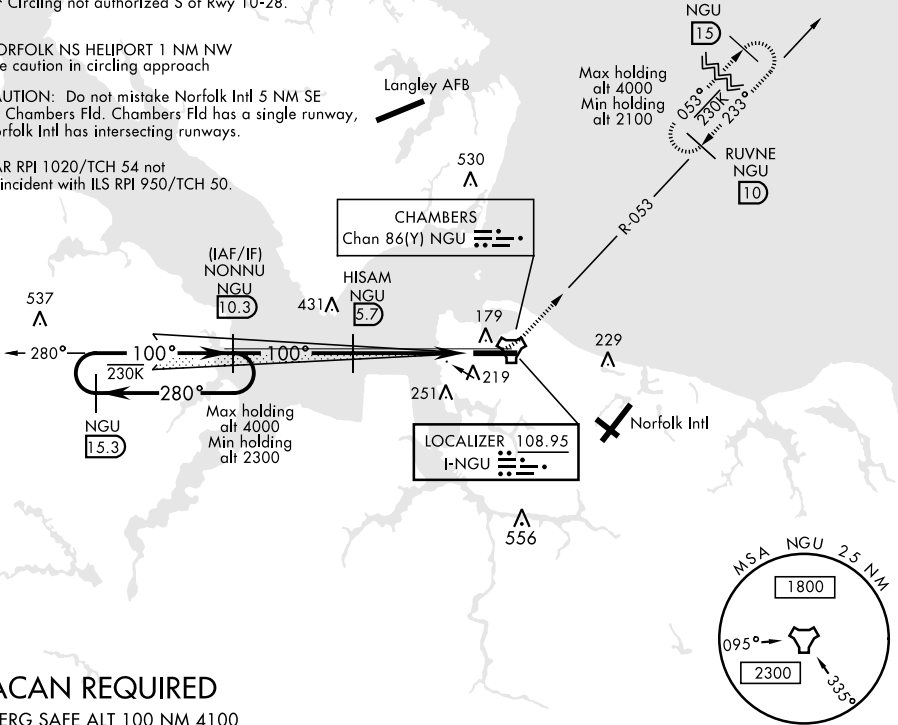
ATIS <b>118.425 342.0</b>	NORFOLK APP CON <b>118.9 353.7</b>	CHAMBERS TOWER <b>124.3 379.15</b>	GND CON <b>121.8 370.85</b>	CLNC DEL <b>120.7 339.8</b>	ASR/PAR
------------------------------	---------------------------------------	---------------------------------------	--------------------------------	--------------------------------	---------

\*\*\* Circling not authorized S of Rwy 10-28.

NORFOLK NS HELIPORT 1 NM NW  
Use caution in circling approach

CAUTION: Do not mistake Norfolk Intl 5 NM SE for Chambers Fld. Chambers Fld has a single runway, Norfolk Intl has intersecting runways.

PAR RPI 1020/TCH 54 not coincident with ILS RPI 950/TCH 50.



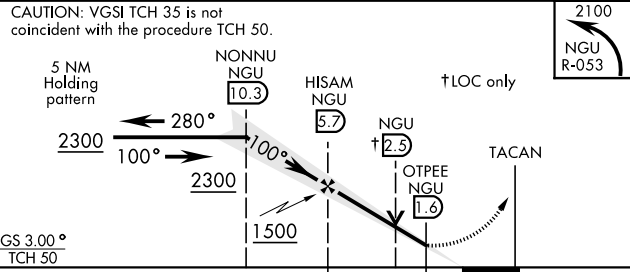
NE-3, 25 FEB 2021 to 25 MAR 2021

NE-3, 25 FEB 2021 to 25 MAR 2021

## TACAN REQUIRED

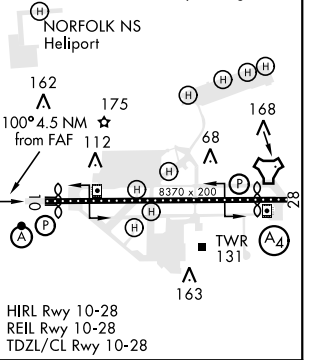
EMERG SAFE ALT 100 NM 4100

CAUTION: VGS1 TCH 35 is not coincident with the procedure TCH 50.



ELEV 15	TDZE 14
---------	---------

Rwy 10 ldg 8071'  
Rwy 28 ldg 7375'



CATEGORY	A	B	C	D	E
S-ILS 10 *	214-½		200	(200-½)	
S-LOC 10 **	480-½	466 (500-½)	480-1	466	(500-1)
CIRCLING ***	500-1 485 (500-1)	560-1 545 (600-1)	560-1½ 545 (600-1½)	580-2 545 (600-2)	700-2½ 685 (700-2½)

HIRL Rwy 10-28  
REIL Rwy 10-28  
TDZL/CL Rwy 10-28

# ILS or LOC/DME RWY 10