

NORFOLK, VIRGINIA

# RNAV (GPS) RWY 28

APCH CRS	Rwy Idg	<b>7375</b>
<b>280°</b>	TDZE	<b>14</b>
	Arprt Elev	<b>15</b>

AL-290 [USN]

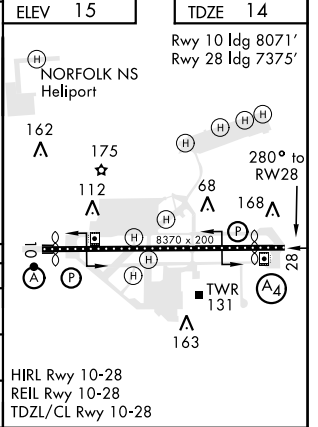
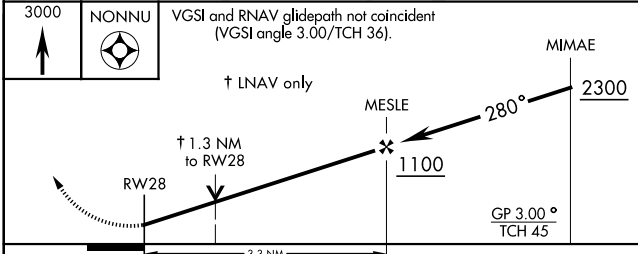
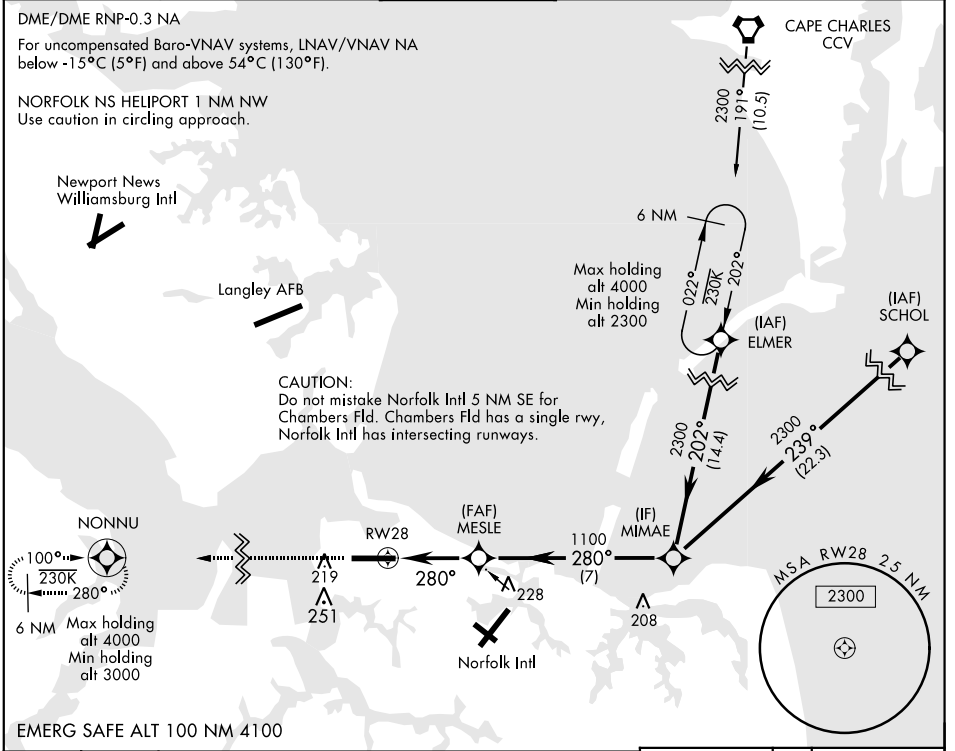
NORFOLK NS (CHAMBERS FIELD) (KNGU)

▼ \* When ALS inop, increase vis to 1½ mile. Helicopter vis reduction below ¾ NA.  
 \*\* When ALS inop, increase CAT AB vis to 1 mile; CAT CDE vis to 1½ miles.  
 \*\*\* Circling not authorized S of Rwy 10-28.



MISSED APPROACH: Climb to 3000 direct NONNU and hold, continue climb in hold to 3000.

ATIS <b>118.425 342.0</b>	NORFOLK APP CON <b>118.9 353.7</b>	CHAMBERS TOWER <b>124.3 379.15</b>	GND CON <b>121.8 370.85</b>	CLNC DEL <b>120.7 339.8</b>	ASR/PAR
------------------------------	---------------------------------------	---------------------------------------	--------------------------------	--------------------------------	---------



CATEGORY	A	B	C	D	E
LNAV/VNAV DA *	400-7/8		386	(400-7/8)	
LNAV MDA **	460-3/4	446 (500-3/4)	460-1		446 (500-1)
CIRCLING ***	500-1 485 (500-1)	560-1 545 (600-1)	560-1½ 545 (600-1½)	580-2 565 (600-2)	700-2½ 685 (700-2½)

NORFOLK, VIRGINIA  
Amdt 5 26MAR20

36° 56' N-76° 17' W

NORFOLK NS (CHAMBERS FIELD) (KNGU)

# RNAV (GPS) RWY 28

NE-3, 25 FEB 2021 to 25 MAR 2021

NE-3, 25 FEB 2021 to 25 MAR 2021