

CHERRY POINT, NORTH CAROLINA

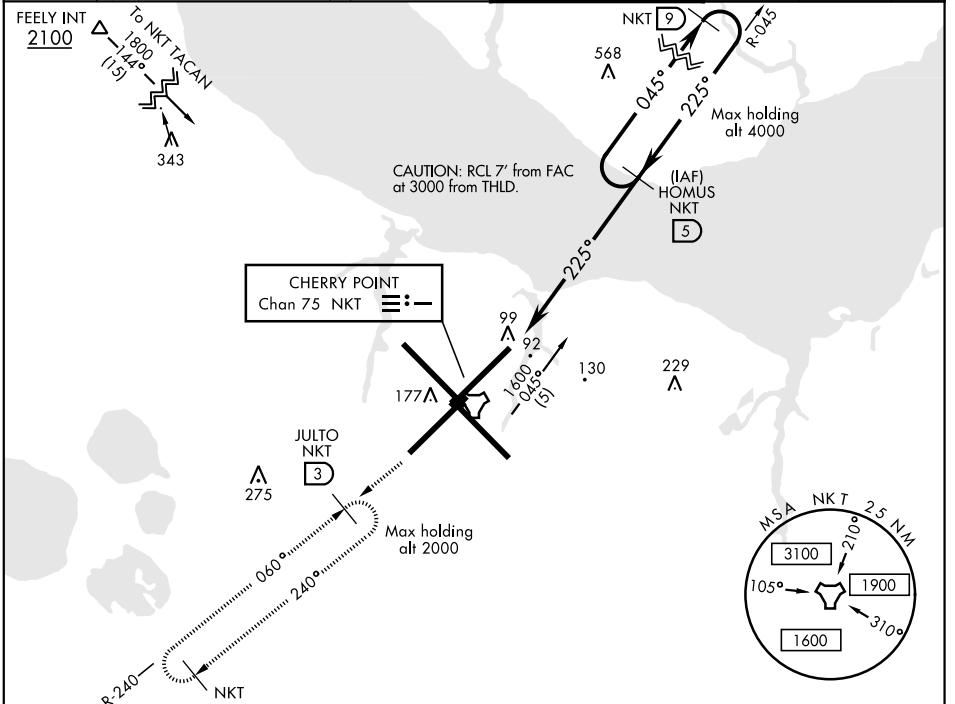
COPTER TACAN RWY 23R

TACAN NKT Chan 75	APCH CRS 225°	Rwy ldg 7552	TDZE 23	Arprt Elev 29
----------------------	------------------	-----------------	------------	------------------

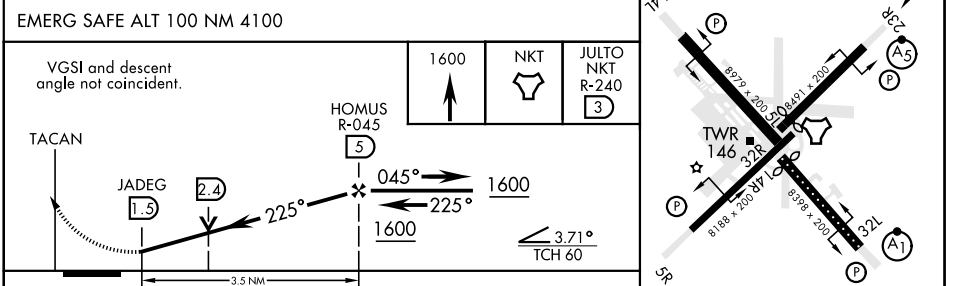
AL-471 [USN] CHERRY POINT MCAS (CUNNINGHAM FLD) (KNKT)

▼ * When ALS inop, increase vis to 1 mile. Max Airspeed 90 KIAS	MALSR 	MISSED APPROACH: Climb to 1600 direct NKT TACAN, then via NKT R-240 to JULTO and hold.
--	-----------	--

ATIS 127.475 244.875	CHERRY POINT APP CON (E) 119.75 360.775 (abv 2600') (E) 132.575 299.6 (at/blw 2600') (W) 119.35 377.175 (N) 124.1 268.7	CHERRY POINT TOWER 121.3 340.2	GND CON 128.625 239.025	CLNC DEL 125.95 316.125	ASR/ PAR
----------------------------	--	-----------------------------------	-------------------------------	-------------------------------	-------------



ELEV 29	D	TDZE 23
Rwy 32R, 23L, 14R, 5L 225° to TACAN marked in center mat area.		



CATEGORY	COPTER	
S-23R *	480-½	457 (500-½)

HIRL all Rwy
REIL Rwy 5L and 14R
Rwy 5L-23R 7552', 14R-32L ldg 7551'

CHERRY POINT, NORTH CAROLINA 34°54'N-76°53'W CHERRY POINT MCAS (CUNNINGHAM FLD) (KNKT)

Amtd 6 10SEP20

COPTER TACAN RWY 23R

SE-2, 25 FEB 2021 to 25 MAR 2021

SE-2, 25 FEB 2021 to 25 MAR 2021