

ILS or LOC/DME RWY 23R

LOC/DME I-NKT 108.9 Chan 26	APCH CRS 234°	Rwy ldg 7552 TDZE 23 Arprt Elev 29
---	-------------------------	---

AL-471 [USN]

CHERRY POINT MCAS (CUNNINGHAM FLD) (KNKT)

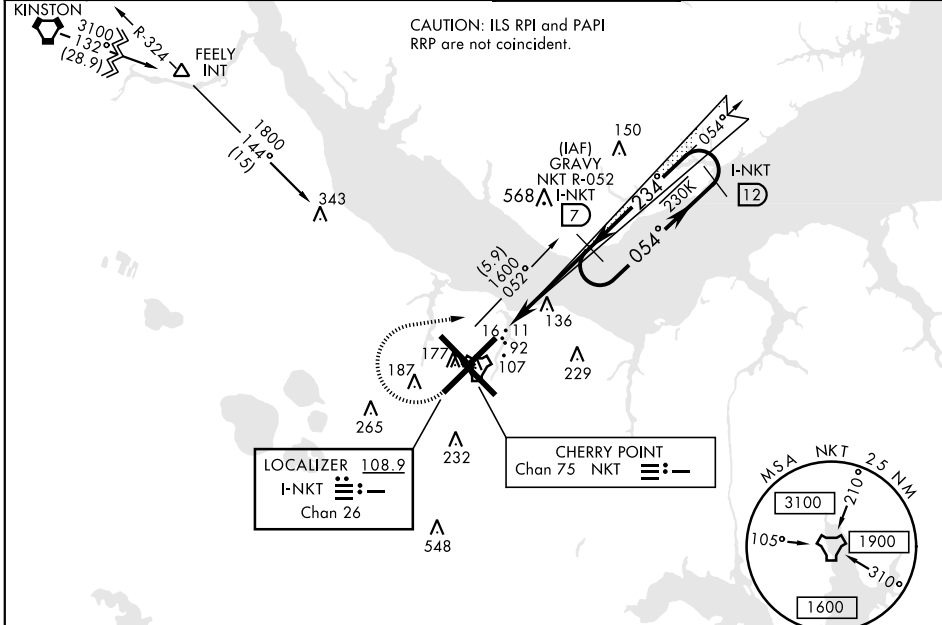
TACAN Required

▼ * When ALS inop, increase vis to ¾ mile.
** When ALS inop, increase vis to 1 mile.

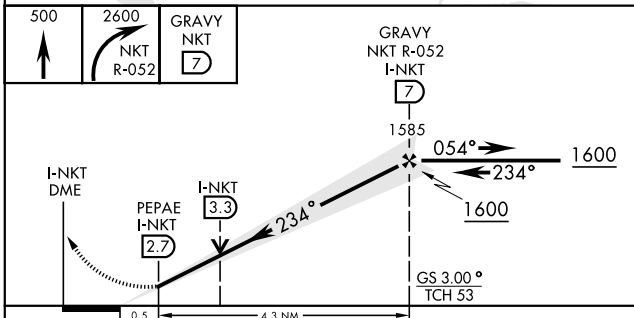


MISSED APPROACH: Climb to 500, then climbing right turn to 2600 via NKT TACAN R-052 to GRAYV and hold. Continue climb in hold.

ATIS 127.475 244.875		CHERRY POINT APP CON (E) 119.75 360.775 (abv 2600') (E) 132.575 299.6 (at/blw 2600') (W) 119.35 377.175 (N) 124.1 268.7		CHERRY POINT TOWER 121.3 340.2	GND CON 128.625 239.025	CLNC DEL 125.95 316.125	ASR/PAR
--	--	--	--	---	---	---	---------



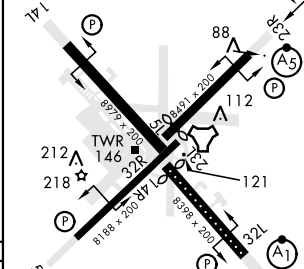
EMERG SAFE ALT 100 NM 4100



CATEGORY	A	B	C	D
S-ILS 23R*		223-½	200 (200-½)	
S-LOC 23R**	400-½	377 (400-½)	400-⅝	377 (400-⅝)
CIRCLING	580-1	551 (600-1)	600-1½ 571 (600-1½)	600-2 571 (600-2)

ELEV 29	TDZE 23
---------	---------

Rwy 32R, 23L, 14R, 5L 234° 4.8 NM marked in center mat area. from FAF



HIRL all Rwy
REIL Rwy 5L and 14R
Rwy 5L-23R ldg 7552',
14R-32L ldg 7551'
FAF to MAP 4.3 NM

Knots	60	90	120	150	180
Min:Sec	4:18	2:52	2:09	1:43	1:26

ILS or LOC/DME RWY 23R

SE-2, 25 FEB 2021 to 25 MAR 2021

SE-2, 25 FEB 2021 to 25 MAR 2021