

CHERRY POINT, NORTH CAROLINA

RNAV (GPS) RWY 14L

| | | |
|--|-------------------------|--|
| WAAS Chan 41117 W14A | APCH CRS 144° | Rwy Idg TDZE Arprt Elev 8979 26 29 |
|--|-------------------------|--|

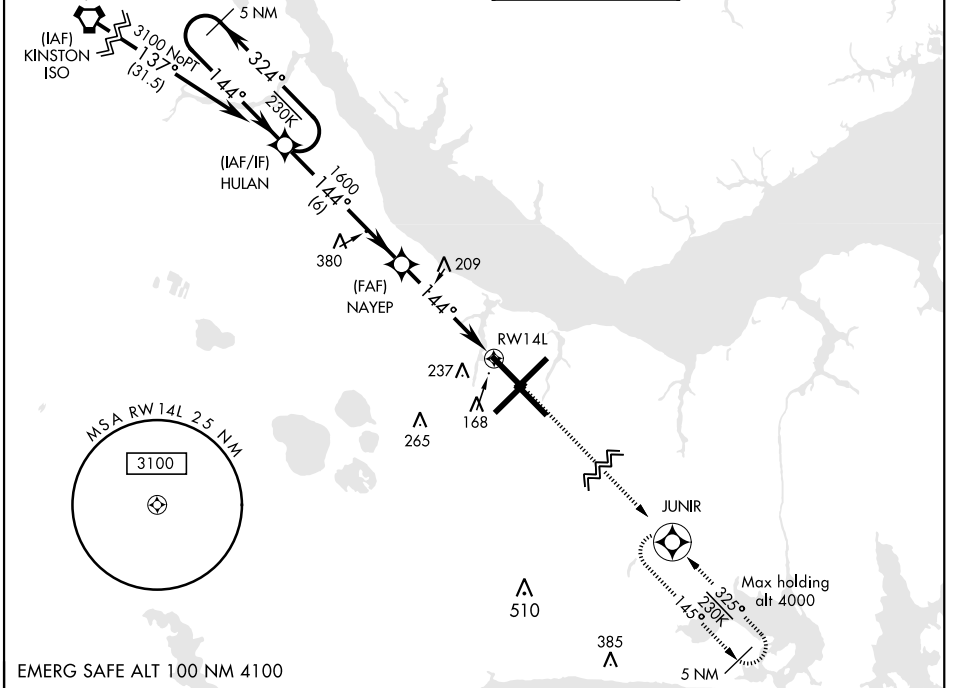
AL-471 [USN] CHERRY POINT MCAS (CUNNINGHAM FLD) (KNKT)

RNP APCH

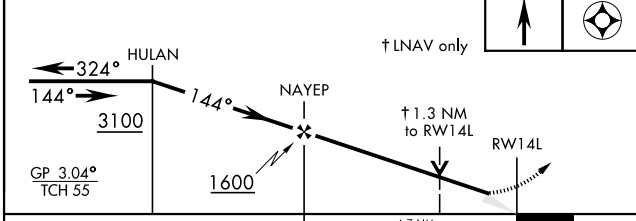
▼ For uncompensated Baro-VNAV systems, LNAV/VNAV NA below -15°C (5°F) or above 54°C (129°F).

MISSED APPROACH: Climb to 3100 direct JUNIR and hold.

| | | | | | |
|--|--|---------------------------|----------------------------------|---------------------------------|---------|
| CHERRY POINT APP CON | | CHERRY POINT TOWER | GND CON | CLNC DEL | ASR/PAR |
| ATIS 127.475 244.875 | (E) 119.75 360.775 (abv 2600') (E) 132.575 299.6 (at/blw 2600') (W) 119.35 377.175 (N) 124.1 268.7 | 121.3 340.2 | 128.625 239.025 | 125.95 316.125 | |

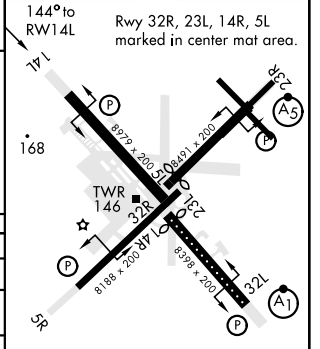


VGSI and RNAV glidepath not coincident



| | | | | |
|--------------|----------------------|----------------------|------------------------|----------------------|
| CATEGORY | A | B | C | D |
| LPV DA | 226-¾ | | 200 (200-¾) | |
| LNAV/VNAV DA | 300-¾ 274 (300-¾) | 311-¾ 285 (300-¾) | 319-¾ 293 (300-¾) | 330-¾ 304 (400-¾) |
| LNAV MDA | 500-1 | 474 (500-1) | 500-1¾ | 474 (500-1¾) |
| CIRCLING | 580-1 | 551 (600-1) | 600-1½ 571 (600-1½) | 600-2 571 (600-2) |

ELEV 29 TDZE 26



HIRL all Rwy
REIL Rwy 5L and 14R
Rwy 5L-23R Idg 7552'
Rwy 14R-32L Idg 7551'

CHERRY POINT, NORTH CAROLINA

34° 54'N-76° 53'W

CHERRY POINT MCAS (CUNNINGHAM FLD) (KNKT)

Amdt 3 10SEP20

RNAV (GPS) RWY 14L

SE-2, 25 FEB 2021 to 25 MAR 2021

SE-2, 25 FEB 2021 to 25 MAR 2021