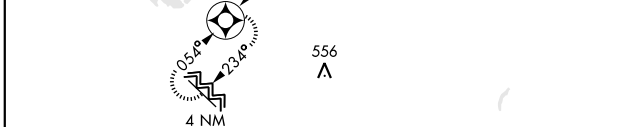
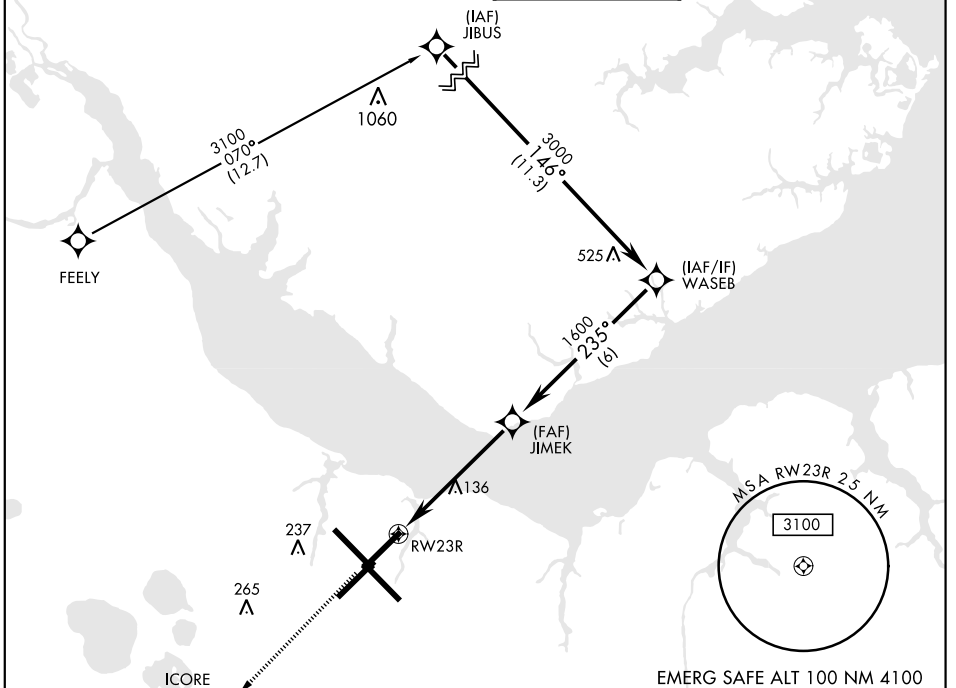


# RNAV (GPS) RWY 23R

WAAS Chan <b>51523</b> <b>W23A</b>	APCH CRS <b>235°</b>	Rwy ldg TDZE Arprt Elev <b>7552</b> <b>23</b> <b>29</b>	AL-471 [USN] CHERRY POINT MCAS (CUNNINGHAM FLD) (KNKT)
--	-------------------------	--	--

RNP APCH ▼ * When ALS inop, increase vis to ¾ mile. ** When ALS inop, increase to 1 mile.	MALSR 	Missed Approach: Climb to 3100 direct ICORE and hold. Continue climb in hold to 3100.
---	-----------	--

ATIS <b>127.475</b> <b>244.875</b>	CHERRY POINT APP CON (E) <b>119.75</b> <b>360.775</b> (abv 2600') (E) <b>132.575</b> <b>299.6</b> (at/blw 2600') (W) <b>119.35</b> <b>377.175</b> (N) <b>124.1</b> <b>268.7</b>	CHERRY POINT TOWER <b>121.3</b> <b>340.2</b>	GND CON <b>128.625</b> <b>239.025</b>	CLNC DEL <b>125.95</b> <b>316.125</b>	ASR/ PAR
--	--	---	---	---	-------------



3100	ICORE	† LNAV only	WASEB	3000
		† 1.0 NM to RWY 23R		
				GP 3.04° TCH 54

CATEGORY	A	B	C	D
LPV*	223-½		200	(200-½)
LNAV MDA**	400-½	377 (400-½)	400-¾	377 (400-¾)
CIRCLING	580-1	551 (600-1)	571 (600-1½)	571 (600-2)

EMERG SAFE ALT 100 NM 4100

ELEV 29		TDZE 23
---------	--	---------

Rwy 32R, 23L, 14R, 5L marked in center mat area. 235° to RWY 23R

HIRL all Rwy  
REIL Rwy 5L and 14R  
Rwy 5L-23R ldg 7552',  
14R-32L ldg 7551'

# RNAV (GPS) RWY 23R

SE-2, 25 FEB 2021 to 25 MAR 2021

SE-2, 25 FEB 2021 to 25 MAR 2021