

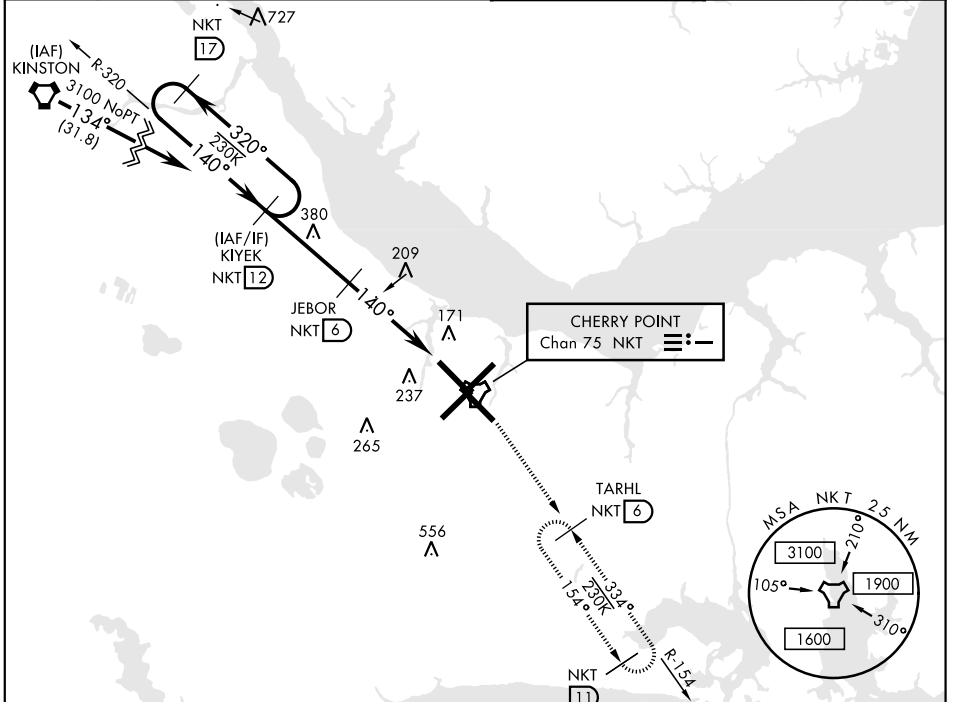
# TACAN RWY 14L

TACAN NKT Chan <b>75</b>	APCH CRS <b>140°</b>	Rwy ldg TDZE <b>8979</b> 26 29
--------------------------	----------------------	--------------------------------------

AL-471 [USN] CHERRY POINT MCAS (CUNNINGHAM FLD) (KNKT)

**MISSED APPROACH:** Climb to 1600 direct NKT TACAN, then direct TARHL and hold.

ATIS <b>127.475</b> <b>244.875</b>	CHERRY POINT APP CON (E) <b>119.75</b> <b>360.775</b> (abv 2600') (E) <b>132.575</b> <b>299.6</b> (at/blw 2600') (W) <b>119.35</b> <b>377.175</b> (N) <b>124.1</b> <b>268.7</b>	CHERRY POINT TOWER <b>121.3</b> <b>340.2</b>	GND CON <b>128.625</b> <b>239.025</b>	CLNC DEL <b>125.95</b> <b>316.125</b>	ASR/PAR
--	--	---	---	---	---------



SE-2, 25 FEB 2021 to 25 MAR 2021

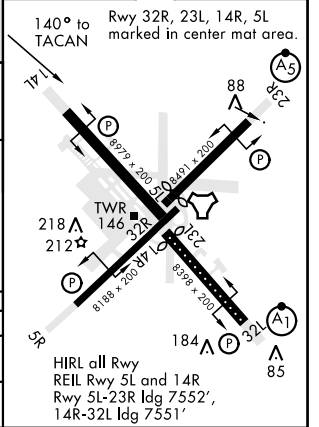
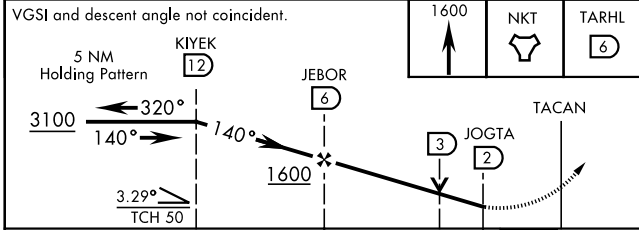
SE-2, 25 FEB 2021 to 25 MAR 2021

ELEV 29	TDZE 26
---------	---------

EMERG SAFE ALT 100 NM 4100

140° to TACAN

Rwy 32R, 23L, 14R, 5L marked in center mat area.



CATEGORY	A	B	C	D
S-14L	500-1 474 (500-1)		500-1½ 474 (500-1½)	
CIRCLING	580-1	551 (600-1)	600-1½ 571 (600-1½)	600-2 571 (600-2)

# TACAN RWY 14L